



DISCOVER.



EMPOWER.



TOGETHER.

CONTENTS.



About HoW

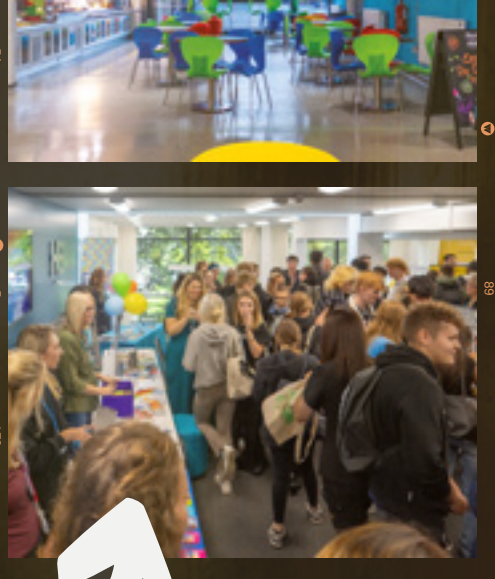
- 6. Welcome to HoW College
- 8. Why Choose HoW
- 10. Entry Requirements
- 12. Types of Courses
- 14. Vocational Courses vs A-Levels
- 16. Student Support
- 18. Learner Voice
- 20. Student Experience
- 22. Equality, Diversity and Inclusion
- 24. Let's Talk Finance
- 26. Careers and Employability
- 28. Personal Development
- 30. Our Campuses
- 40. Our Facilities
- 42. Apply in Five
- 76. National Star
- 92. Football Academy
- 100. Key Locations
- 102. HoW can we help you
- 103. HoW to find us



Our Courses

- | | |
|------------------------------------|---|
| 46. Access to Higher Education | 74. Inclusive Learning |
| 48. Apprenticeships | 74. The SEN Base |
| 54. Art and Design | 78. Progressions |
| 56. Automotive | 80. Health, Social Care and Early Years |
| 58. Beauty Therapy | 82. Hospitality and Catering |
| 60. Business and Management | 84. Media Production |
| 62. Computing | 86. Performing Arts |
| 64. Construction | 88. Public Services |
| 66. Digital Media and Games Design | 90. Sports |
| 68. Electrical Installation | 94. Travel and Tourism |
| 70. Engineering | 96. Higher Education |
| 72. Hairdressing | 98. Adult Skills and Community |

OPEN DAYS.



Wednesday
8th October 25
5pm - 8pm
All Campuses

Saturday
15th November 25
10am - 1pm
All Campuses

Wednesday
28th January 26
5pm - 8pm
All Campuses

Saturday
18th April 26
9:30am - 12:30pm
All Campuses

Come to one of our open events, see our industry standard facilities and meet our experienced staff.



DISCOVER.



Follow HoW
f @ y in d
@how_college

WELCOME TO HoW COLLEGE.



Welcome to Heart of Worcestershire College.

We are thrilled that you are thinking about joining our friendly, inclusive and exciting college. Choosing what to do next in your education is a big step, and we are here to help make it an informed and positive one.

At Heart of Worcestershire College (HoW College), our goal is simple: **improve lives through learning**. Every course, every lesson, and every opportunity is designed to help you grow, learn new things, and move closer to your dreams. This could mean getting your dream job, going to university, or learning skills that help you stand out.

Our college is built on values we follow everyday. We call it **#HoWCares**. We are **honest, optimistic, and welcoming**. We want you to feel comfortable and supported from the moment you arrive. We also work in **collaboration** with local businesses to open doors for you.

We are **ambitious** about your future, always striving to help you achieve your very best. We are **respectful, empowering, and supportive**, so you will always find someone ready to guide and help you.

We offer lots of high-quality practical and hands on courses in many subjects. You will learn in modern classrooms with teachers who have real experience in the courses they teach, and who care about your success. We also work with many local employers and this is how we deliver the skills that are needed for jobs today and in the future. Our focus is to support you to become life, work, career, and opportunity ready.

Our students achieve well, attain impressive results, and many go on to continue their studies at university. But don't just take our word for it, come and visit us. Look around our campuses and see what makes HoW College such a great place to learn. A place that helps thousands of young people and adults, reach their goals, and build a strong future.

We are excited to welcome you.



Michelle Dowse
Principal and Chief Executive



EMPOWER.

WHY CHOOSE HOW?

At HoW College, our priority is to provide you with an excellent education, arming you with skills and knowledge to be career-ready and excel in the world of work!

We are also passionate about making sure your experience as a HoW student is fulfilling and enjoyable.

Why choose us:

- Skilled and experienced teaching staff
- Industry standard facilities
- Wide variety of courses including T Levels and Apprenticeships
- Strong employer links
- Industry Placement opportunities
- Robust guest speaker programme
- Dedicated support teams
- Rich student life and social opportunities
- Great transport links
- Campuses in prime locations

ENTRY REQUIREMENTS.

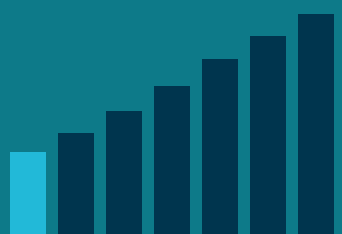
No matter what your current level of qualification is, we have a path suitable for you.



No Formal Entry Qualifications

Equivalent to:

Independent Living Skills and Skills for Work Progressions

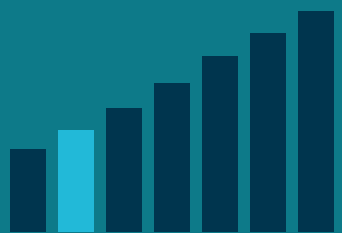


Entry Level Courses

Grades 2 or above

Equivalent to:

Level 1 Diplomas, Certificates and Awards
Skills for Work 2
Support into Employment
Level 2 Foundation Access and Personal Tutor
Access if not achieved 5 GCSE's

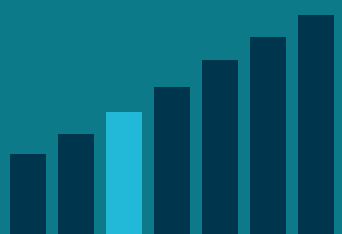


Level 1 Courses

4 GCSEs Grades 9-3 Including English and Maths

Equivalent to:

GCSEs
Level 2 Diplomas
Apprenticeships
PT Access if not achieved 5 GCSE's
Level 2 Certificate

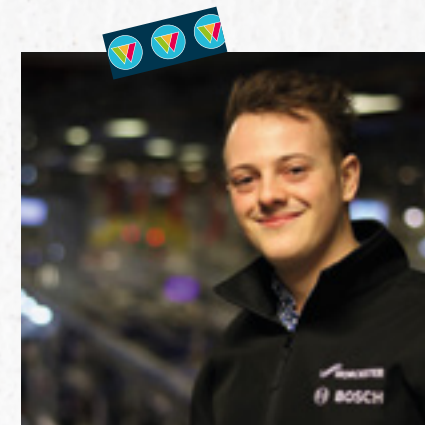


Level 2 Courses



The support from tutors has been exceptional and has gone beyond expectations. I attended after-college workshops to help me with modules I was struggling with. Without this option provided by the tutors, I would have definitely struggled.

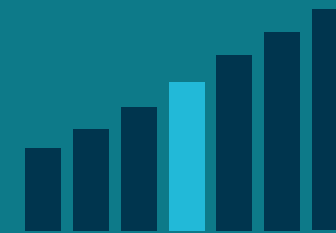
Alex Bethell
BTEC Level 3 in Manufacturing.



5 GCSEs Grades 9-4 Including English and Maths

Equivalent to:

A-Levels
Extended Diplomas
Advanced Apprenticeships
Access to Higher Education Courses
T Level

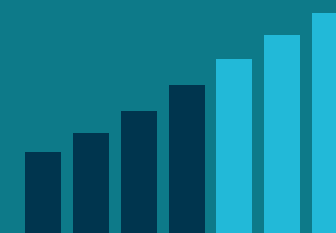


Level 3 Courses

Higher and Professional Qualifications

Equivalent to:

HNCs
HNDs
Foundation Degrees
Professional Quantifications
Level 7 Diplomas



Level 4+ Courses

If you don't achieve a Grade 4 in English and Maths you can either resit alongside starting your course or complete a functional skills programme.

*Entry requirements for some courses may vary due to course material. For information about specific course requirements, please contact our Admissions Team: feadmissions@howcollege.ac.uk

TYPES OF COURSES.

No matter what your starting point is, we have the route to help you achieve your goals.



Apprenticeships

Apprenticeships let you earn while you learn! You'll get paid to train in a real job, gaining hands-on experience and industry-recognised qualifications. Whether you're into tech, business, or the trades, it's a brilliant way to kickstart your career without student debt. Learn, work, and grow all at once.

To study, you will need:

Two or more GCSEs at Grade 4 or above in subjects relevant to your course. However, in some sectors, employers ask for a minimum of grade 4/5 in Maths and English.

What can you do next:

You can progress to a: higher level Apprenticeship, full-time course at HoW or full-time employment.

Progressions

If you're not quite ready to join a Level 2 or 3 programme, our Progression Pathways allow you to study at Entry Level and Level 1 and will prepare you to progress onto a higher level.

Alternatively, if you want skills-based training in areas such as hairdressing, beauty and construction, you'll start your journey on a Level 1 Skills Pathway, before progressing to higher levels.



I really enjoyed my time at HoW College. The teaching was excellent, and the courses were well structured. Each lesson was delivered with clarity, making it easier to understand and stay engaged.

Henry Nwelue-Kelechi
L2 First Certificate in Computing



T Levels

T Levels are exciting two-year courses that mix classroom learning with real-world work experience. You'll gain hands-on skills in areas such as digital, early years or health care. You will also spend 45 days a year with an employer on a work placement. It's a smart route to a great career, Apprenticeship, or university.

To study, you will need:

Typically, a minimum of five GCSEs at Grade 5 or above, including Maths and English Language as well as subjects relevant to your chosen course.

What can you do next:

You can progress to university, a university level course here at HoW, an Apprenticeship at HoW or to employment.

Vocational Level 2 and 3

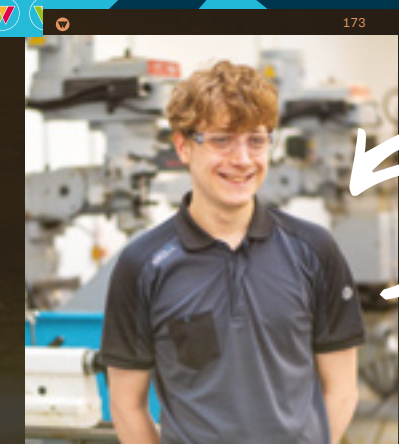
Vocational qualifications are all about learning by doing. They focus on practical skills for specific careers such as beauty, engineering, or hospitality. You'll train in real-life settings, build confidence, and get job-ready fast. It's a great choice if you prefer hands-on learning and want to step straight into work or further training.

To study, you will need:

Depending on which level you are aiming for, you will need a minimum of four or more GCSEs Grades 9-3 including English and Maths.

What can you do next:

You can progress to university, a university level course here at HoW, an Apprenticeship at HoW or to employment.





HoW College specialises in vocational, technical and professional qualifications. Here are some of the reasons why we think they could be right for you:

QUICK COMPARISON GUIDE

	A-LEVELS	VOCATIONAL
TAKE A MINIMUM OF THREE SUBJECTS	✓	
SPECIALISE IN ONE SUBJECT AREA		✓
CLASSROOM BASED STUDY	✓	
MIXTURE OF CLASSROOM BASED STUDY AND PRACTICAL APPLICATION		✓
CAN APPLY TO UNIVERSITY	✓	✓
CAN APPLY TO AN APPRENTICESHIP	✓	✓
ENGLISH AND MATHS	✓	✓
EXAMS AND ASSESSMENTS	✓	✓

All of our vocational and technical courses have work experience or work related learning as part of their study programme.

TOGETHER.

VOCATIONAL COURSES VS A-LEVELS.

STUDENT SUPPORT.

It can be nerve-wracking leaving school and moving on to a different environment, but we have put steps in place to **make sure you feel safe, happy and confident.** HoW cares about each and every student that comes to study with us, that's why we have teams dedicated to supporting you:

Personal Tutors

When you start your journey at HoW, you will be assigned a Personal Tutor. Your Personal Tutor will set actions and monitor your overall progress, whilst also providing you with pastoral support to ensure you reach your full potential at college. Your Personal Tutor will deliver our THRIVE Personal Development programme through both group tutorials and one-to-one support throughout the year.

Wellbeing

Our designated Wellbeing Team are here to support you during your time at college and to help you to reach your full potential. We can provide:

- A safe space to discuss personal or emotional challenges you may be experiencing
- Specialist wellbeing advice, guidance, and support to meet your individual needs and to safeguard you during your time at college
- A range of support delivered through one-to-one, group sessions, or simply by accessing our resources
- Access to personal and social development opportunities within our HoW R U Hubs
- Signposting and referring to specialist services outside of college for additional support.

Specialist Learning Support Team

If you have an Education, Health and Care Plan (EHCP), our dedicated Specialist Learning Support Team is here to help you thrive at college. Support is tailored to your individual needs and may include some in-class assistance from a Learning Support Assistant, where appropriate. This targeted support is designed to encourage independence, ease your transition from school to college, and prepare you for future employment. We work closely with you to ensure your learning experience is inclusive, empowering, and focused on your personal goals.

Academic Skills Support Mentors

Our Academic Skills Support Mentors are available to offer help and guidance to Further Education students. They are based in our fantastic Learning Centres across the campuses and provide one-to-one or small group support outside of the classroom, using study skills strategies and assistive technology. They are also on hand to support students requiring exam access arrangements. Once you have enrolled or at any time during your course, you can self-refer or your teacher can refer you to Academic Skills Support, a mentor will then get in touch and arrange a meeting to put together an action plan to meet your needs. Whether you need techniques to manage Dyslexia, help to organise your assignments and meet deadlines, or support to achieve distinction grades, the team will offer a wealth of knowledge and learning support strategies to enable you to reach your full potential.

Academic Coaches support our Adult Learners and Apprentices who have a declared learning need or EHCP.

Young Carers

Here at HoW College, we understand the barriers that young carers face, we provide support and advice and can refer you to external support agencies. Please let your Personal Tutor know you are a young carer, you can also refer yourself into the wellbeing service to access support.

Care Experienced

If you are a Care Experienced young person, the Wellbeing Team are here to support you during your time at college. This can include:

- Supporting your transition to college
- Ensuring you have the right financial support in place
- One to one support meetings
- Liaising with other agencies to support you at college such as your Social Worker or Carers
- Representation and supporting you at meetings
- Being a single point of contact for you and those who support you.

HoW to reach our teams:

specialistlearningsupport@howcollege.ac.uk

academicsupport@howcollege.ac.uk

wellbeingr&b@howcollege.ac.uk (Bromsgrove and Redditch)

wellbeingw&m@howcollege.ac.uk (Worcester and Malvern)



LEARNER VOICE.

At HoW College, **we are passionate about listening to our students.** Students have a number of ways in which they can feedback about their College experience and have their voices and opinions heard.

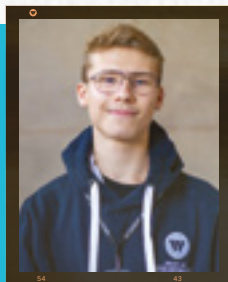
We ask students to complete surveys in order for us to make sure we are meeting students' needs and making the college experience as rewarding as possible. Students also have the opportunity to be elected by their peers in the following roles:

Student Ambassador

Student Ambassadors will be elected in a dedicated Thrive tutorial session. Each course group will elect 1-2 Student Ambassadors. The Student Ambassadors will be the representative voice of the group. Ambassadors will also:

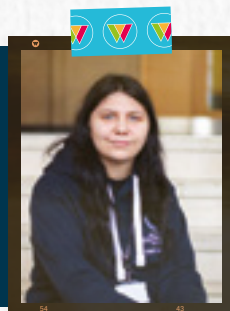
- Attend teaching and learning focus groups
- Support Open Events
- Feedback to peers 'you said, we did'
- Take part in staff recruitment panels
- Attend Student Conferences
- Meet with inspectors and assessors
- Attend hustings

Meet our Students Ambassadors:



"Hi! My name is Oliver and I am proud to be a Student Ambassador at HoW College. As part of my role, I participate in activities intended to consider viewpoints of students, whether positive or critical, and relay them onto the college to be discussed, as well as my own ideas as a Student Ambassador. This also includes attending meetings and conferences and being a spokesperson for the students. What I enjoy most about being a student ambassador is the feeling of value and community - I truly feel woven into the fabric of the college and I can trust in the fact my words, my views and feelings are appreciated."

"Hi my name is Angel and I am a Student Ambassador at HoW College. As part of my role, I help the Student Experience team, such as doing workshops, training and improving the college. I enjoy having meetings with all the rest of the Ambassadors, getting to know each other and what it is like hearing everyone else's opinions on what they think we should do!"



Student Governor

Becoming a Student Governor is a great opportunity to expand your horizons and add value to your CV! The Student Governor will attend meetings relating to the College and has an input in the steps we take to make our College an outstanding place for students to complete their studies.

Students also have the opportunity to take part in:

Student Ambassador Subgroups

Student Ambassadors can participate in an advanced role, supporting the Personal Development Framework and support or lead on activities promoting the following areas.

- Equality, Diversity and Inclusion
- LGBTQIA+
- ECO
- Neurodiversity
- Social Action
- Digital Innovation
- Health and Wellbeing

Curriculum Focus Groups

You can share your views about your course with leaders from your curriculum area in our Focus Groups. This could be in the form of feeding back about which modules you found the most useful, or any activities or resources you think would improve your study experience.

If you are excited by the sound of these opportunities, you can contact the student experience team for more information about how you can get involved: studentexperience@howcollege.ac.uk





STUDENT EXPERIENCE.



We want to make sure your experience as a HoW student is as wonderful as possible, which is why we have areas in college dedicated to your wellbeing and happiness.

The HoW R U Hubs

All students are welcome to spend their free time in the HoW R U hubs that are located on each campus. Each hub has a pool table, table tennis, Xbox, VR headsets, games and more! You will normally be able to find members of the Student Experience Team in the hubs in Bromsgrove, Redditch and Worcester who are on hand if you need them.

The Learning Resource Centres

Our Learning Resource Centres (LRC) are designed as a place to go to for both study and free time. Fitted with lots of nooks, books and computers, our students can head to the LRC for additional study or just to have some quiet time. The Learning Centres offer a library of key texts to support your studies alongside a great range of student endorsed fiction books, celebrating diversity and including dyslexia friendly titles. The LRC team offer support with using the computers, WiFi and have a variety of equipment for loan. There are also many digital resources available through the Learning Centres that support and enhance your curriculum study from college or at home, all of which the Learning Centres team can help you to discover. Regular workshops are also held throughout the year to support you with study skills to improve and enhance your academic success.

Canteens

Our canteens are always busy thanks to our lovely staff and the fabulous selection of food and drink they provide for our students. Whether it's a chat over coffee with a friend, or a quick lunch time bite, our canteens have seats aplenty and lots of delicious offerings for you to enjoy!



SXP TEAM
LOCATED ON
EACH CAMPUS



HOW R U ON
ALL CAMPUSES

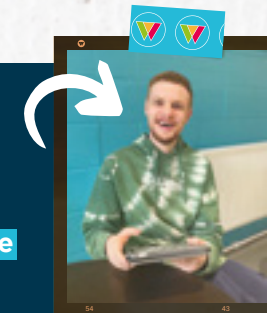
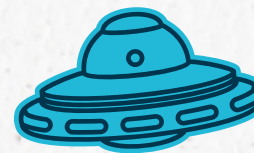


CANTEENS
AND VENDING
MACHINES ON
EACH OF OUR
CAMPUSES



FREE SHUTTLE
BETWEEN
BROMSGROVE
AND REDDITCH





Here's what Christian, a HoW alumni has to say about his experience as a disabled student:

"My name is Christian, I have Cerebral Palsy, Epilepsy and I am non-verbal. When I started at HoW, I was nervous like anyone would be, but the **Specialist Support Staff guided me through everything.** The College made me feel so welcome, and that's because of HoW College's general ethos to inclusivity. The staff always had a can-do attitude, so nothing was beyond me in terms of requirements for the course.

I left HoW College with a BTEC Distinction in Sport, a Grade 4 GCSE in Maths and a Grade 5 GCSE in English. Since leaving college, I have had the confidence and grades to go on to Higher Education and have graduated with a University Degree in Sports Coaching Science with Disability Sport. **HoW College was the real starting point for me,** and it gave me the confidence to do things that I would never have thought possible when I left school."

One of the most important ways of enhancing inclusion within our community is through continual education. Taking the time to learn about different walks of life, perspectives and current injustices, is at the centre of making real progression towards creating an environment and world that is accepting of all individuals.

Here's just some of the EDI campaigns and events at HoW College:

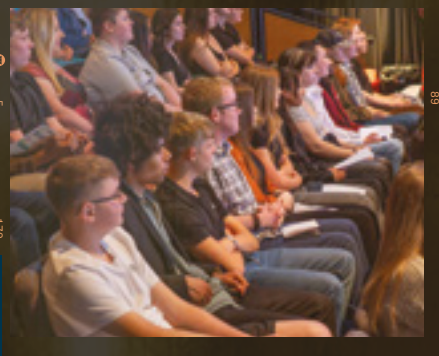
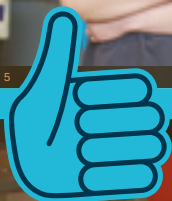
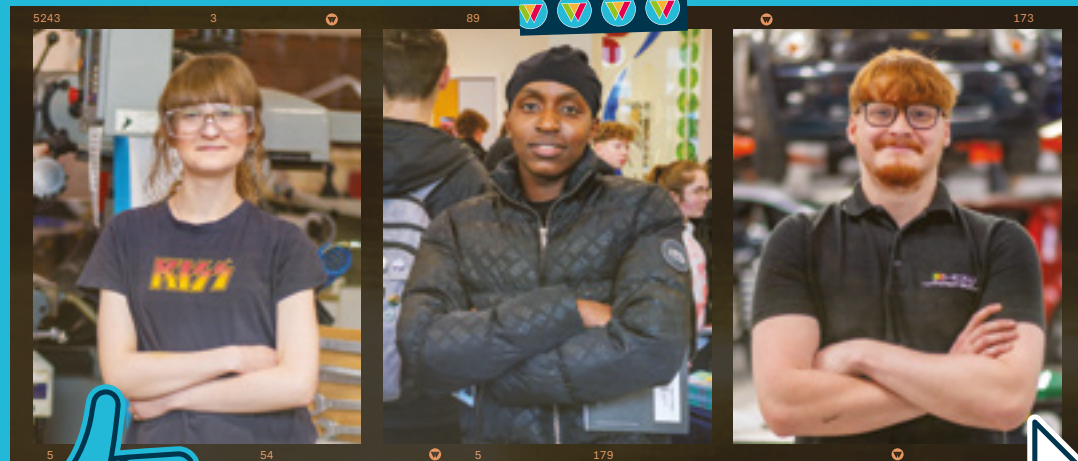
- February** - LGBT+ History Month
- March** - Fearless Females Week and International Women's Day
- April** - Autism Awareness Month
- May** - Mental Health Awareness Week
- September** - World Suicide Prevention Day
- October** - Black History Month and World Mental Health Day
- November** - Movember, Magnificent Males and International Men's Day



- Mental Health Awareness
- LGBTQIA+
- Healthy Relationships
- Sexual Violence and Harassment
- Cultural Celebrations
- Random acts of kindness



EQUALITY, DIVERSITY AND INCLUSION.



Here at HoW College, Inclusion is of utmost importance to us. We want everyone to feel welcome, included and accepted within our college community, and we strive continuously towards this in various ways.



We know that students have a lot to juggle and we understand the financial commitment which can come with college life. Here at HoW College, we have a number of bursaries to provide a helping hand to those who need it. Support can be in the form of travel costs, food, equipment and other course related costs.

Further Education Student Support Fund

Supporting you with all aspects of college life from equipment, uniform and trip costs, to meals and childcare.

Free Travel

Helping you to get to and from college. If you qualify, we will pay for your bus/train pass.

Advanced Student Loans (All)

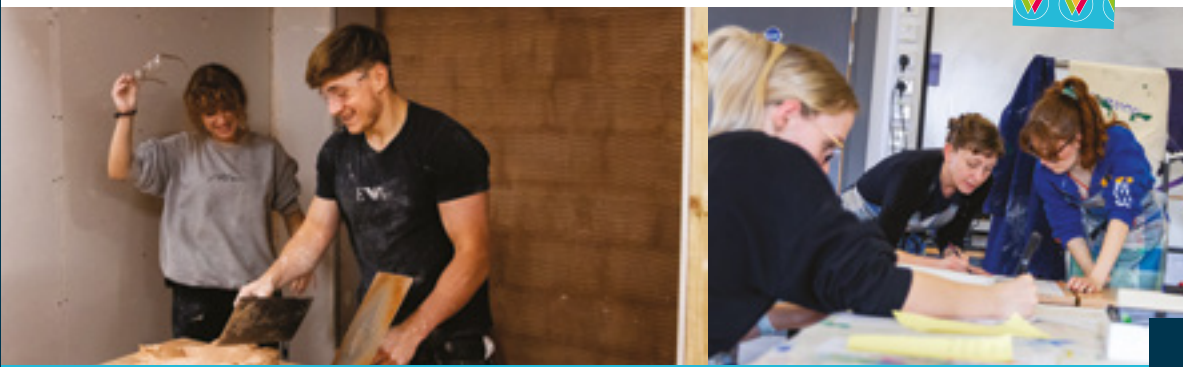
Support aimed at those aged over 19 studying a Level 3/4 course to help with fees.

Free College Meals

Fuel yourself and be ready to learn with our free college meals scheme.

LET'S TALK FINANCE.

HERE TO SUPPORT YOU STARTING COLLEGE LIFE. 



The support is dependent on course level, age and household income. For more information, please contact our student finance support teams on (Redditch/ Bromsgrove) studentfinance-redditch@howcollege.ac.uk or (Worcester) studentfinance-worcester@howcollege.ac.uk.

How Do I Get Support?

Once you have enrolled on a course, please speak to our customer service team about applying for support with the costs of college.

For more information visit our website howcollege.ac.uk/student-life/student-finance/further-education-finance

All support is subject to terms and conditions.



SCAN HERE TO EXPLORE



CAREERS AND EMPLOYABILITY



We are proud to work with the following strategic partners:



The career market can be extremely competitive, that is why at HoW College we begin to prepare you for the world of work from day one.

Progression

We offer a wide range of higher education courses and Apprenticeships which you can progress onto.

Work Experience

We have a dedicated work experience team to help you find a placement. As part of your vocational/technical course, you will be required to participate in work experience or work related activities.

Student Voice

We offer the opportunity for you to become a Student Ambassador to really make your CV stand out.

Guest Speaker Programme

Employers and universities come and speak to our students about progression opportunities and the job market.

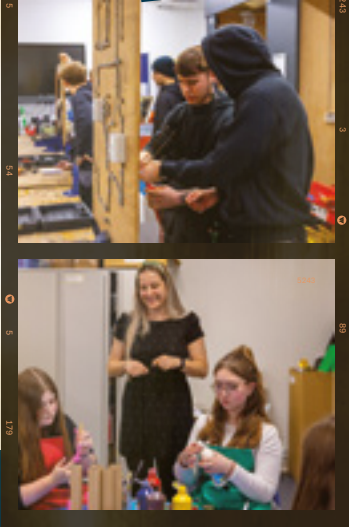
Live Projects Designed by Employers

Employers regularly attend college to set students live projects. This gives students real experience of the world of work and enhances their CV.

Career Advice and Guidance

Our dedicated careers team offer specialist one-to-one guidance sessions to enable our students to progress to the next step of their career journey. They also offer support and advice on UCAS applications, job searching, interviews and CV writing.

PERSONAL DEVELOPMENT.



THRIVE

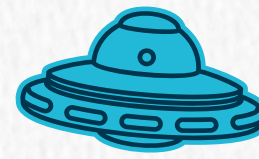
THRIVE is a student-centred, differentiated personal development programme designed to support individual development needs. It develops core skills, builds confidence and resilience for mental and physical health, teaches age-appropriate relationship education, and encourages appreciation of individual differences.

The 34 week programme includes a range of core topics, flexible delivery, and extended resources for when they are needed. Thrive is timetabled for 2 hours a week for all students and has support from dedicated and highly experienced Personal Tutors (PT's). PT's will meet with you regularly and help with your course work, personal development and general support while at college.

ELEMENTS

At HoW College, **we prioritise developing independent and collaborative digital skills.** Recent studies show that over 80% of jobs advertised in the UK now list digital skills as a required competency, highlighting the increasing necessity to build strong digital capabilities for the evolving workforce.

Our timetabled online learning programme, Elements, is built into Entry Level 2 and Level 3 study programme. Elements focuses on course specific content and delivers this via our online learning platform, Moodle. You'll also work on an employer-endorsed project, based on real-life scenarios to support your career ready digital skills. Common tasks within Elements includes digital activities like polls, quizzes, forums, and interactive videos.



Thrive and Elements both complement the college's personal development framework and 5C's.

Our personal development framework covers these areas:

- Life Ready - Thrive and personal development
- Work Ready - Core employability Skills
- Career Ready - Potential Pathways
- Opportunity Ready - Compete, Community and Contribution.

Our college 5C's help develop your skills in:

- Critical Thinking
- Creativity
- Communication
- Collaboration
- Company Behaviours



HoW DIGITAL

HoW College offers comprehensive support for your development of digital skills through our learning centres, HoW Digital teams, IT facilities, and designated study areas. Throughout the academic year, you will have access to digital workshops, individualised assistance, and opportunities to become digital champions, ensuring that every student feels well-supported in their digital learning journey.

We also support our students with online access and digital tool subscriptions during their course. This includes:

- Full Microsoft 365 educational account with apps and Cloud storage
- Microsoft Teams for collaboration and communication
- Moodle for online remote learning opportunities
- Educational licence to Canva and other educational digital tools



The support from tutors was always helpful, and they encouraged me to work hard and do well.

Noah Harrop
Level 3 Extended Diploma in Creative Media Production & Technology





How College stands as the largest institution for further education in Worcestershire County, with campuses located in Bromsgrove, Redditch, Malvern and Worcester.

Each campus is equipped with state-of-the-art facilities designed to ignite creativity, innovation and practical skills across various subject areas.

OUR CAMPUSES.

ABOUT HOW.



ABOUT HOW.

BROMSGROVE.



Our Bromsgrove campus is perfectly situated within five minutes from the town centre. You can access the campus by car, foot, or by the Shuttle Bus that travels between our Bromsgrove and Redditch campuses.

To use our Shuttle, all you need is your HoW College badge, and you can hop straight on! The Shuttle is exclusively for HoW staff and students.

Each of our courses provide a mix of theory and practical work and offers an element of work experience to ensure you gain the right skills, knowledge and experience to kickstart your career. So, whether you want to unleash your creativity, design the next big game, get behind the camera, or get your hands dirty in our workshops, this campus has a course to suit everyone.

Facilities in Bromsgrove:

- Learning Resource Centre
- HoW R U Hub
- Canteen
- Wellbeing Office
- Outdoor Space with Basketball Court
- Engineering, Automotive and Electrical Installation Workshops
- Art, Ceramics and Photography Studios
- Computing Suites

Head to **page 100** to find out more information about the location of our campuses.

Bromsgrove Courses:

- Art and Design
- Automotive
- Engineering
- Electrical Installation
- Computing and IT
- Games Design and Creative Media
- Media Production (TV & Film)



SCAN HERE TO EXPLORE

REDDITCH.



Head to **page 100** to find out more information about the location of our campuses.

Redditch Courses

- Access to HE
- Business
- Construction
- Early Years
- Hair and Beauty
- Health and Social Care
- Inclusive Learning
- (SEN Base)
- Progressions
- Hospitality and Catering
- Public Services
- Science
- Sports
- Travel and Tourism

Our campus in Redditch is a stone's throw from the town centre-home to the popular Kingfisher Shopping Centre.

The campus is easily accessible by car, foot or by the Shuttle Bus. To use our Shuttle, all you need is your HoW College badge, and you can hop straight on! The Shuttle, is exclusively for HoW staff and students.

With Redditch being our second largest campus, we offer a wide variety of courses. From Business to Sport, Construction to Hospitality and Catering, we have something for everybody! Our courses are predominantly practical with a touch of theory, giving you the perfect recipe for an engaging and exciting education!

Alliance House, based in Redditch, is a short walk from our main campus and offers a dedicated space for our Construction courses.

Facilities in Redditch:

- Learning Resource Centre
- HoW R U Hub
- Canteen
- Wellbeing Office
- Careers Office
- Outdoor Space
- Aircraft Cabin and Check-in Desk
- Industry standard kitchens
- Commercial restaurant (Archer's)
- Commercial Salon (Fusion)
- Sport and Fitness Centre
- Sports Hall
- Construction Centre (Alliance House)
- IT suites
- The Base



SCAN HERE TO EXPLORE

MALVERN.



Malvern Courses

- Bricklaying
- Brickwork
- Carpentry and Joinery
- Construction Skills
- Maintenance Operations



Head to **page 100** to find out more information about the location of our campuses.

This is the home of Construction! This campus is equipped with state-of-the-art workshops to ensure you gain hands-on experience during your lessons and feel prepared for employment.

Our Malvern campus offers a range of construction-based courses for anyone who is interested in gaining a qualification in trades such as Bricklaying or Carpentry.

Facilities in Malvern

- Canteen
- Learning Facilities
- Brickwork workshop
- Carpentry Workshop



SCAN HERE TO EXPLORE

WORCESTER.

Head to **page 100** to find out more information about the location of our campuses.

Worcester Courses

- Access to HE
- Art and Design
- Automotive
- Business
- Computing and IT
- Early Years
- Electrical Installation
- Engineering
- Games Design
- Hair and Beauty
- Health and Social Care
- Hospitality and Catering
- Inclusive Learning (SEN Base)
- Performing Arts
- Progressions
- Plumbing
- Public Services
- Sports
- Travel and Tourism

Ideally located in the heart of Worcester city centre, our Worcester campus is made up of five buildings:

- All Saints' (our main campus building)
- St Dunstan's (our Creative Arts and Hair & Beauty building)
- St Andrew's (our Performing Arts, Business and Computing building)
- Cathedral (home of our Engineering facilities)
- The Duckworth Centre of Engineering (where Automotive and Plumbing is situated)

They are all easily accessible by train, car or foot. Similar to other campuses, our Worcester campus is in a great location with everything the city centre has to offer at your fingertips! Our campus in Worcester is our biggest and boasts a wide range of courses and facilities all waiting to provide you with the skills you need to kickstart your future!

Facilities in Worcester

- Learning Resource Centre
- HoW R U Hub
- Canteen
- Wellbeing Office
- Careers Office
- Aircraft Cabin and Travel Agent
- Art and Design Studios
- Lecture Theatre
- Industry standard kitchens
- Commercial Salon (Fountains)
- Access to Perdiswell Leisure Facilities
- IT suites and Centre of Digital Engineering
- Spires Theatre
- The Base
- Engineering and Automotive Workshops



SCAN HERE TO EXPLORE

OUR FACILITIES.

Here at HoW College we're proud to offer our students the opportunity to put their skills into practice in our wide variety of industry-standard facilities. From engineering workshops and beauty salons, to commercial restaurants and computing centres, there is something for everyone.



Worcester Learning Centre



Hair and Beauty Salon



Construction



Redditch Campus Fitness Facilities



The Duckworth Centre of Engineering



Science Facilities



Spires Theatre



Archers Restaurant



Engineering Workshop



Perdisswell Leisure Centre



Air Craft Cabin



TV Studio

APPLY IN FIVE

You're just five simple steps away from starting your college journey.

**ON YOUR MARKS.
GET READY.
GO!!!**

1. LOOK.

Take a look through our prospectus and website to find the right course for you.

2. ATTEND.

Come to one of our open events, talk to our lecturers and students and find out how we can help you achieve your full potential.

**KEEP
GOING!!!**

START YOUR FUTURE.

5. OFFER.

If successful you will be offered a place and invited to a welcome in the summer.

4. INTERVIEW.

Once we have received your application you will be invited to attend an interview. You will be advised at the end of your interview if you have been successful.

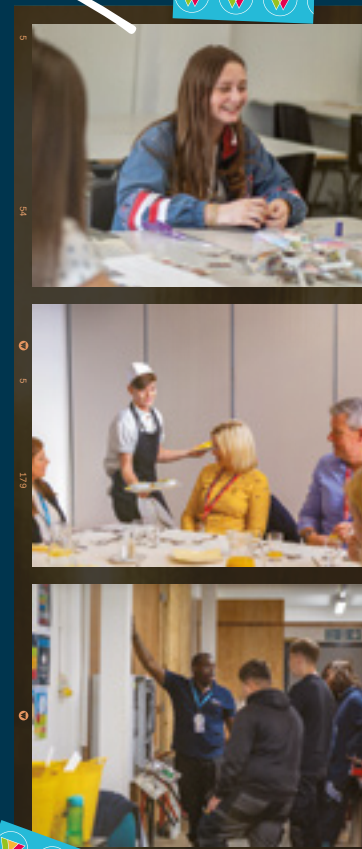
3. APPLY.

Apply online via our website at howcollege.ac.uk



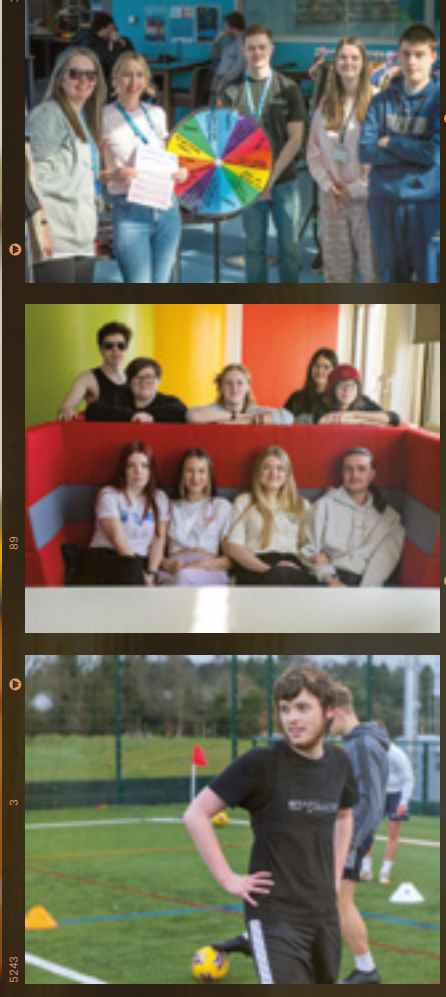
Explore our courses

- 46. Access to Higher Education
- 48. Apprenticeships
- 54. Art and Design
- 56. Automotive
- 58. Beauty Therapy
- 60. Business and Management
- 62. Computing
- 64. Construction
- 66. Digital Media and Games Design
- 68. Electrical Installation
- 70. Engineering
- 72. Hairdressing
- 74. Inclusive Learning
- 74. The SEN Base
- 78. Progressions
- 80. Health, Social Care and Early Years
- 82. Hospitality and Catering
- 84. Media Production
- 86. Performing Arts
- 88. Public Services
- 90. Sports
- 94. Travel and Tourism
- 96. Higher Education
- 98. Adult Skills and Community



For the latest information on our courses online

SEARCH howcollege.ac.uk/courses



OUR COURSES.

ACCESS TO HIGHER EDUCATION.

Looking to return to education and kickstart the next stage of your journey?

Our Access to Higher Education courses offer a supportive and flexible pathway for anyone looking to return to education. Whether you are seeking a career change or looking to apply to university after being out of work for a while, these courses have been designed with you in mind. With a focus on building academic knowledge and essential study skills, our Access courses provide the confidence and preparation needed to thrive in a higher education environment – regardless of your age, background or previous experience.

Courses are available at our following campuses:



SKILLS.



- Independent Research
- Academic Writing
- Critical Thinking skills - Reflection, Evaluation
- Professional behaviours
- Numeracy in healthcare
- Science Laboratory skills

Level 2 Courses

Access to Higher Education: Pre-Access ^R ^W

Are you dreaming of a new or better career and thinking of applying for university but have been out of work or education for a while and need to brush up on your skills and achieve GCSE English language and Maths?

Level 3 Courses

Diploma in Access to Higher Education:

Health Professions ^R ^W

This course will provide you with the skills and knowledge you need to achieve your dreams and succeed in higher education, providing students with an understanding of the essential elements required by Health Professionals.

Diploma in Access to Higher Education: Social Science ^R ^W

Social Science is a fascinating subject, but especially suitable if you are thinking of a career that involves working with people, such as Social Work, Community Outreach, Policing, Primary Teaching or working with charities and would like to progress to University.

Diploma in Access to Higher Education: Science ^W

With our Access to Higher Education Diploma (Science), you will be on your way to progress to University to study a HE course in Science or a health profession such as Dietetics, Physiotherapy, Radiography or Microbiology.

PROGRESSIONS. PROGRESSIONS.

Progress onto our Higher Education Courses:

- HNC in Computing
- HND in Business Management
- HNDs in Computing
- Foundation Degree in Early Years
- HND in Public Services
- Foundation Degree in Digital Media and Games Design
- Foundation Degree in Sports and Leadership Management
- HND in Sport and Exercise Science

For more information on our university level courses please visit our website HOWCOLLEGE.AC.UK



College to Career

Industry jobs include:

- Nursing
- Journalism
- Youth Work
- Chemist
- Midwifery
- Police

Chloe Martin

L3 Diploma in Access to Higher Education: Health

"I had a great experience at HoW College, I learnt lots about subjects that interested me and I was able to surround myself with like-minded people."



SCAN HERE TO EXPLORE

APPRENTICESHIPS.

KICK START YOUR FUTURE.

READY TO START EARNING WHEN YOU'RE LEARNING?

Completing an Apprenticeship is an excellent way to gain hands-on experience whilst building the skills employers are looking for. As an apprentice, you'll work alongside experienced staff, learning directly from those in the industry whilst also earning a wage. Apprenticeships combine practical training with classroom learning and are offered in a wide range of sectors making them a flexible and rewarding route into employment and further progression.

SUBJECT AREAS

- Accountancy
- Business Administration
- Construction Technologies
- Customer Services
- Early Years
- Engineering and Manufacturing
- Hairdressing
- Hospitality and Catering
- Human Resources
- IT
- Leadership and Management
- Vehicle Maintenance and Repair

Hannah Randall

Trainee Vehicle Repair Technician



The best part about doing an Apprenticeship at HoW College is the extra effort made by the teaching staff to make sure that I reach my potential.

Doing an Apprenticeship with HoW has broadened the scope of my future career by introducing me to specialist jobs within the automotive industry.



WHY BECOME AN APPRENTICE?



EARN A SALARY

Apprentices are paid for their work. Earn a salary as well as training in your field.



GET PAID FOR YOUR HOLIDAY

Apprentices have standard employee benefits such as holiday pay and sick pay.



FAST-TRACK YOUR CAREER

Move up the career ladder quicker than university graduates with job experience and industry knowledge to match.

LEVELS OF APPRENTICESHIPS

INTERMEDIATE APPRENTICESHIP

Qualification Level: 2
Equivalent to: GCSE

HIGHER APPRENTICESHIP

Qualification Level: 4 and 5
Equivalent to: Foundation Degree and above

ADVANCED APPRENTICESHIP

Qualification Level: 3
Equivalent to: A-level

DEGREE APPRENTICESHIP

Qualification Level: 6 and 7
Equivalent to: Bachelor's or Master's Degree

HOW TO APPLY FOR AN APPRENTICESHIP.

To complete an Apprenticeship you must be over the age of 16 and not in full time education.

STEP ONE

Visit howcollege.ac.uk and find a vacancy or register your interest on our AIMs site.

STEP TWO

Either remotely or face-to-face you will be required to speak to a member of the Solutions Team to discuss apprenticeship options and ensure it is right for you. You will also be required to undertake initial assessments in Maths, English and the vocation of your choice.

STEP THREE

Interview with employer.

WHAT IF I AM ALREADY EMPLOYED?

If you are already working or know an employer that would like to employ you as an apprentice, please email:

solutions@howcollege.ac.uk or ring **01905 743435**.

We will be able to arrange a visit to the employer to confirm arrangements.

Mariah Sutton
Recruitment Apprentice

Mariah, a Recruitment Apprentice at Polaris, began her career journey at 23 years old through an Apprenticeship after facing uncertainty during the COVID-19 pandemic. In her role supporting HR and recruitment for a children's services organisation, she's gained both professional and personal skills while earning a wage and working toward a qualification.

ART AND DESIGN.

Looking for a course that allows you to unleash your creativity?

Our Art and Design courses allow you to bring your artistic visions to life. You'll be studying in vibrant studio spaces designed to foster innovation and imaginative thinking. With two specialist facilities in Worcester and Bromsgrove, our Art and Design department offers well equipped studios tailored to your studies.

Courses are available at our following campuses:



Salaries in this industry can range from £28k-£37k

Level 2 Courses

UAL Diploma In Art and Design **B W**

During this one-year course you will experiment with a broad range of materials, processes, and techniques across Art and Design disciplines such as printmaking, photography, and ceramics.

Level 3 Courses

UAL Applied General Diploma / Extended Diploma in Art and Design **B W**

Equivalent to three A-Levels, this two-year course offers an initial broad exploration of Art and Design disciplines. Experimenting with drawing, photography, and painting, you will gradually become more independent in making and research to develop your own visual language.

UAL Foundation Diploma in Art and Design **B**

This one-year Foundation course will initially provide you with an investigation into a variety of materials, processes, and techniques. Throughout the course, the nature of your art work will shift and change, through contextual research and material exploration as you begin to specialise in a chosen area within Art and Design.



College to Career

Industry jobs include:

- Artist
- Teacher
- Art Therapist
- Tattoo Artist
- Freelance Artist
- Creative Director
- Graphic Designer
- Photographer
- Videographer

Toby Buxton

L3 Foundation Diploma in Art and Design

"Studying at HoW College was a transformative experience. The supportive, passionate tutors and the creative atmosphere gave me the freedom and tools to grow artistically—both technically and conceptually. The strong rapport between students and staff made it easy to explore ideas across different mediums."

SKILLS.



- Creativity
- Collaboration
- Critical Decision Making
- Industry Standard Presentation
- Digital Portfolio Creation
- Communication



SCAN HERE TO EXPLORE

AUTOMOTIVE.

Ready to shift your future into high gear?

Our Automotive courses offer the perfect blend of theory and practical experience, giving you the chance to work on real vehicles in fully equipped workshops. You'll learn using professional facilities including engine ramps, lifts and hosts – ensuring your gaining hands-on experience from day one. Whether you're passionate about cars, interested in how vehicles work or are looking to start a career in the motor industry, these courses will provide you with a solid foundation.

Courses are available at our following campuses:



Salaries in this industry can range from £25k-£39k



- Technical and Mechanical Skills
- Practical Workshop Experience
- Customer Service
- Health and Safety
- Knowledge and Theory
- Workplace Readiness

Entry Level 3

Introduction to Automotive Maintenance and Repair **B W**

This course covers the basic technical needs for today's motor vehicle repair industry.

Level 1 Courses

Diploma in Automotive Maintenance **B W**

This hands-on course introduces students to the automotive industry through practical training in vehicle servicing and repair.

Level 2 Courses

Diploma in Light Vehicle Maintenance and Repair Principles **B W**

This course builds on existing knowledge, combining theoretical learning with hands-on experience, allowing students to work on real vehicles while developing skills in diagnosing and repairing engines, electrical systems, and chassis components.

Level 3 Courses

Diploma in Light Vehicle Maintenance and Repair Principles **W**

This advanced light vehicle course deepens technical knowledge through a mix of classroom theory and hands-on workshop practice, focusing on diagnosing and repairing complex faults.

Apprenticeships available in this area, see page 48.



College to Career

Industry jobs include:

- Automotive Technician
- Garage Owner
- Mechanic
- Diagnostic Technician



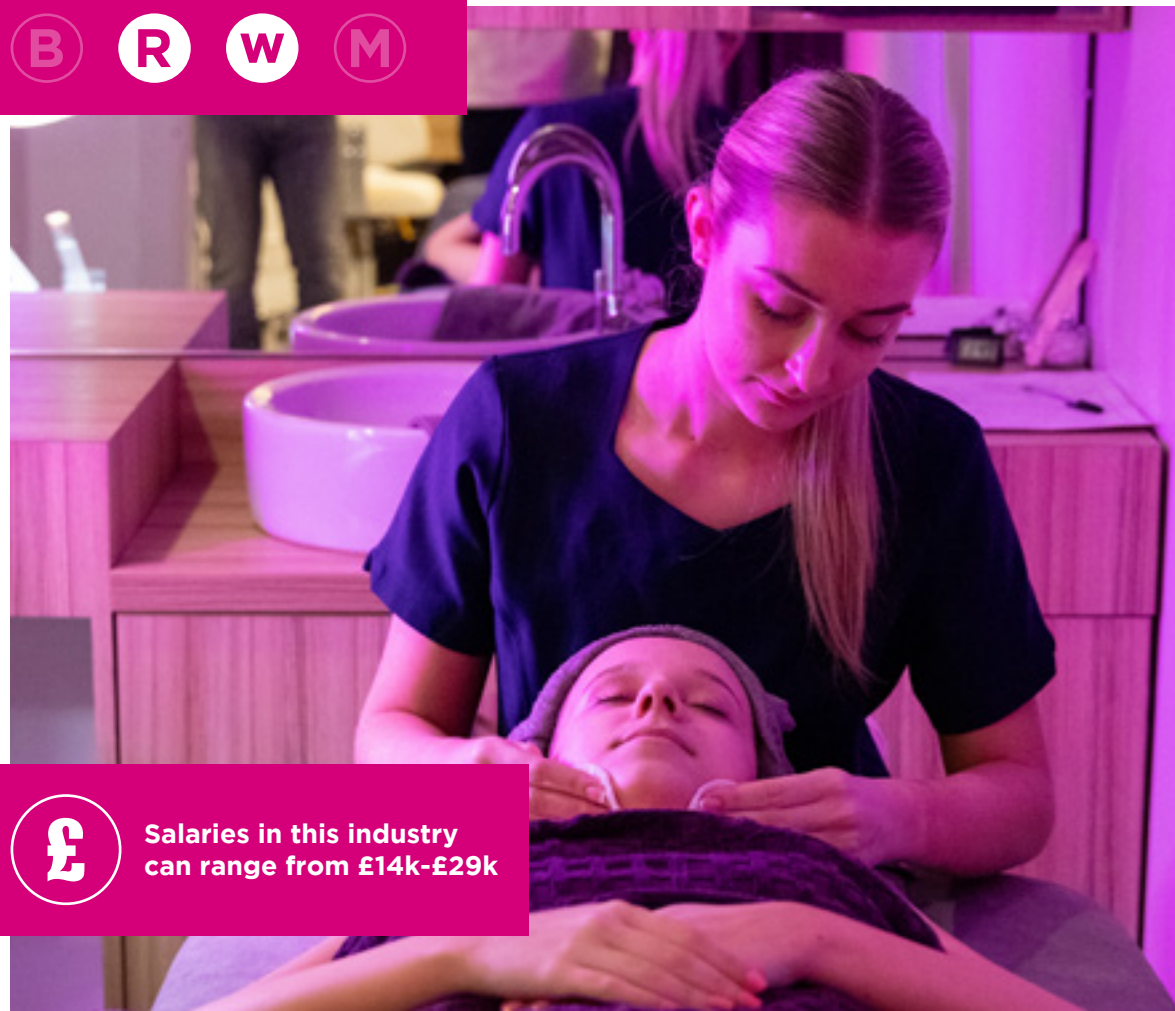
SCAN HERE TO EXPLORE

BEAUTY THERAPY.

Ready to polish your skills and shape your future?

Our Beauty Therapy courses offer an exciting route into the thriving beauty industry. With a mixture of practical training and industry relevant theory, you'll gain the confidence and skills needed to work in salons, spas or even launch your own beauty business. At our Worcester and Redditch campuses, you'll be learning in excellently equipped commercial salons using professional products and equipment as well as working on paying clients. You can be sure that our Beauty courses provide a great environment to develop your expertise, build client experience and prepare you for a successful career.

Courses are available at our following campuses:



Salaries in this industry can range from £14k-£29k

Level 1 Courses

Diploma in Beauty Therapy ^R ^W

This entry-level course is designed for individuals with a strong interest in the beauty industry who may not currently meet the entry requirements for higher-level courses. It provides essential skills and knowledge in beauty therapy.

Level 2 Courses

Diploma in Beauty Therapy Studies ^R ^W

This course is for those wishing to begin a career in the beauty industry, offering practical training in the core skills required to work in a salon environment.

Level 3 Courses

Diploma in Beauty Therapy Massage ^R ^W

This advanced course builds on existing knowledge and offers more in-depth technical and practical training in beauty therapy. It prepares students for employment or further education in the industry.

Level 4 Courses

Diploma in Advanced Aesthetic Treatments ^W

This course provides advanced knowledge and skills in skin treatments, focusing on non-invasive and minimally invasive aesthetic procedures. It is designed for non-medical aesthetic practitioners seeking to specialise further.



College to Career

Industry jobs include:

- Beautician
- Nail Technician
- Spa Supervisor
- Resort Therapist
- Skincare Specialist
- Makeup Artist
- Cosmetics



- Communication Skills
- Customers service
- Teamwork
- Professionalism and Work Ethic
- Problem solving



SCAN HERE TO EXPLORE

BUSINESS AND MANAGEMENT.

Can you see yourself running your own business or shaping the future of a company?

Our Business courses are designed to equip you with the practical skills, strategic thinking and industry insight needed to thrive in today's fast paced business world. Whether you dream of launching your own start-up, creating positive change, or providing innovative solutions, our courses are here to unlock your potential. From marketing to management, finance to innovation, you'll gain a well-rounded understanding of how businesses operate and succeed.

Courses are available at our following campuses:



Salaries in this industry can range from £20k-£48k



- Analytical and problem solving skills
- Financial literacy
- Collaboration and decision making
- Creativity and innovation in business
- Professional standards in business
- Organisational and time management skills

Level 2 Courses

Cambridge Technical Diploma in Business Administration ^{R W}

This qualification is ideal for students with a curious mind, an interest in business, and a desire to build real-world skills in areas like customer service, retail, and administration. Designed to support progression to Level 3 courses or entry into employment, this course helps learners grow in confidence, independence, and workplace readiness.

Level 3 Courses

Pearson National Extended Diploma in Business ^{R W}

This qualification is a two-year course equivalent to three A-Levels, designed for students who want to develop real world business skills and boost their future employability. With theoretical and practical learning in areas such as marketing, finance, international business and management (plus optional units in subjects such as small business planning, event management and HR) this qualification prepares you for university, Apprenticeships, or stepping straight into a junior role in the business world.

Apprenticeships available in this area, see page 48.

PROGRESSIONS. PROGRESSIONS.

Progress onto our Higher Education Courses:

- HND in Business Management

For more information on our university level courses please visit our website HOWCOLLEGE.AC.UK



College to Career

Industry jobs include:

- Sales
- Administrator
- Marketing Manager
- Business Owner
- Payroll
- Event Manager
- Merchandiser
- Executive Assistant
- Brand Consultant
- Entrepreneur
- Book-keeper
- Receptionist
- Business Analyst
- Consultancy

Mariajosé Gutiérrez Betancourt

L2 Diploma in Business Administration

"I enjoyed all the different assignments on this course that helped me to grow and gain more knowledge, allowing me to demonstrate that I was capable to achieve the highest grades even if English wasn't my first language. This showed me that the most important thing is believing in my capabilities and resilience."



SCAN HERE TO EXPLORE

COMPUTING.

Ready to crack the code to computing and discover how the digital world works?

Our Computing courses are designed to prepare you for the fast-moving and ever-evolving world of technology. Whether you're interested in cyber security, web design or system development, you'll gain a strong foundation in both practical skills and theoretical knowledge. Here you'll learn in modern facilities using industry-standard tools, guided by expert tutors who bring real-world experience into the classroom. Computing can lead to exciting opportunities in almost any sector.

Courses are available at our following campuses:



Salaries in this industry can range from £30k-£52k

SKILLS.



- Problem Solving
- Collaboration
- Software Development
- Cyber Security
- IT Support
- Data Management

Level 1 Courses

IT and Digital Media R W

This IT and Digital Media course introduces students to the digital and creative sectors, building core skills.

Level 2 Courses

Extended Certificate in Information and Creative Technology B W

This course covers introductory computing skills from software development to security while also being the T Level Foundation course for Digital T Levels.

Level 3 Courses

T Level: Digital Software Development B W

This course gives you the opportunity to develop your skills in software design and development to high industry standards and apply these to the workplace.

T Level: Digital Support and Security B W

This course gives you the opportunity to develop your skills in IT support and security to a high level and take these forward into the world of work.

Apprenticeships available in this area, see page 48.

PROGRESSIONS. PROGRESSIONS.

Progress onto our Higher Education Courses:

- HNC/HND Computing for England

For more information on our university level courses please visit our website HOWCOLLEGE.AC.UK



College to Career

Industry jobs include:

- Digital Support Technician
- Digital Applications Technician
- Infrastructure Technician
- IT Solutions Technician
- Software Developer



SCAN HERE TO EXPLORE

CONSTRUCTION.

Ready to build your dream career?

Our Construction courses cover a wide range of trades and job roles, including Bricklaying, Carpentry, Joinery, Plastering and Plumbing – giving you the flexibility to explore different areas of the industry. You'll gain hands-on experience in our authentic workshops, developing the practical skills and confidence needed to succeed in the workplace. Our construction courses provide the foundation for a successful future in a growing and rewarding industry.

Courses are available at our following campuses:



Salaries in this industry can range from £30k-£48k

Level 1 Courses

Diploma in Bricklaying ^R ^M

This course provides foundational skills in bricklaying and construction techniques.

Diploma in Carpentry and Joinery ^R ^M

This course provides learners with essential skills and knowledge in woodworking, including basic site carpentry and joinery techniques.

Diploma in Construction Skills ^R ^M

This course introduces learners to a range of basic construction trades and techniques.

Diploma in Plumbing Studies ^R ^W

This course introduces learners to the fundamental skills and knowledge required in the plumbing trade.

Diploma in Plastering ^R ^M

This course is the perfect introduction into the plastering trade, allowing you to gain the fundamental skills needed to progress into employment.

Level 2 Courses

Diploma in Bricklaying ^R ^M

This course builds on foundational bricklaying skills, preparing learners for skilled roles in the construction industry or progression to advanced training.

Diploma in Site Carpentry ^R ^M

This course develops the practical skills and technical knowledge required for skilled site-based carpentry work.

Diploma in Maintenance Operations (Construction) ^R ^M

This course prepares learners for a multi-skilled role in maintaining buildings and facilities.

Diploma in Plumbing Studies ^R ^W

This course develops practical skills and technical knowledge essential for working as a qualified plumber.

Technical Certificate in Plastering (Solid) ^R ^M

This course will give you an insight into this hands-on trade where you'll develop key skills in rendering, taping, jointing and internal plastering.

Level 3 Courses

Advanced Technical Diploma in Plumbing ^R

The Level 3 Advanced Technical Diploma in Plumbing provides in-depth technical knowledge and advanced practical skills needed for senior plumbing roles.

Apprenticeships available in this area, see page 48.

Lily Jones

L2 Technical Skills in Plumbing

"I joined this course to expand my skills and follow in my dad's footsteps and ended up loving it!"



- Collaboration
- Leadership
- Creativity
- Communication
- Critical thinking
- Problem solving



College to Career

Industry jobs include:

- Plumber
- Labourer
- Bricklayer
- Carpenter
- Supervisor
- Plasterer



SCAN HERE TO EXPLORE

DIGITAL MEDIA AND GAMES DESIGN.

Want to be a part of the industry that's shaping the future of entertainment?

Our Games Design and Digital Media courses are the perfect choice for creative thinkers who want to turn their passion into a profession. You'll explore the world of gaming and digital storytelling, working with a mix of industry-standard commercial software and accessible open-source tools. Through creative projects and practical learning, you'll develop key skills in a range of industry specific areas that will ensure you succeed in your career. These courses are ideal for anyone wanting to be a part of a fast-paced, innovative industry where creativity meets technology.

Courses are available at our following campuses:



Salaries in this industry can range from £27k-£45k

SKILLS.



- 2D Games Design
- Research and evaluation of projects
- 3D Modelling, Character Design and Animation
- User Interface (UI) Design
- Industry Exploration and preparation
- 3D Games Design and Engine Proficiency

Level 2 Courses

Diploma in Games Design & Creative Media B W

Throughout this course you will learn how to create 2D games using a variety of skills between gameplay mechanics, graphic design and animation.

Level 3 Courses

National Extended Diploma in Games Design and Creative Media B W

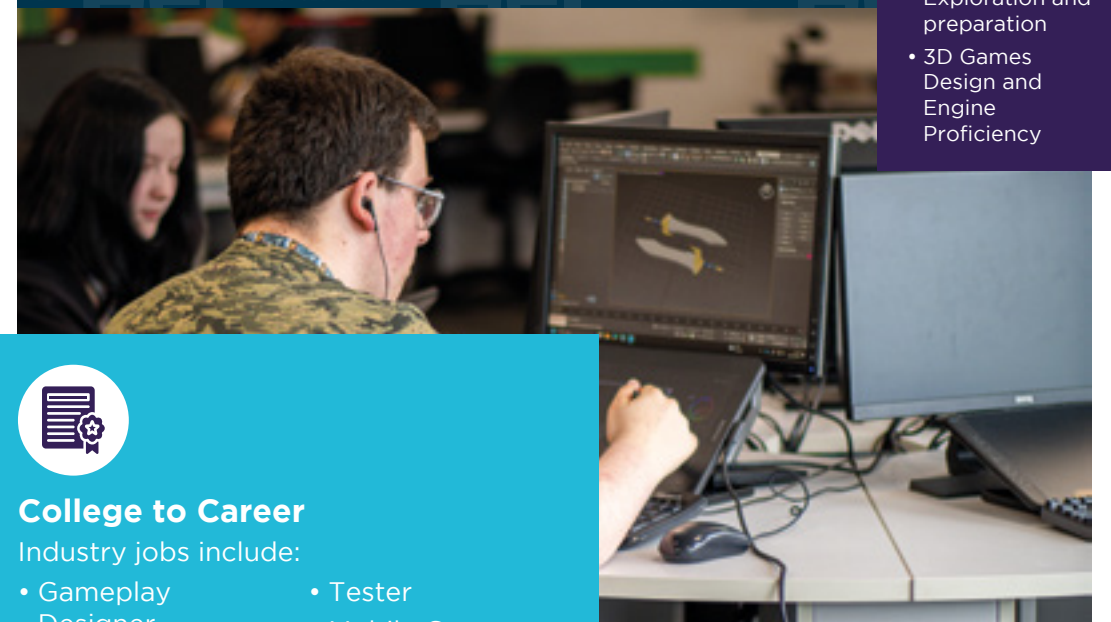
Learn to design immersive game worlds, animate characters and craft compelling stories using industry-standard tools like Unreal Engine, Adobe and 3DS Max in our cutting-edge games design suites - perfect for aspiring game creators.

PROGRESSIONS. PROGRESSIONS.

Progress onto our Higher Education Courses:

- Foundation Degree in Digital Media and Games Design

For more information on our university level courses please visit our website HOWCOLLEGE.AC.UK



College to Career

Industry jobs include:

- Gameplay Designer
- 3D Modeller
- Level Designer
- Environment Artist
- Concept Artist
- Animator
- Quality Assurance
- Tester
- Mobile Game Developer
- Interface Designer
- Texture Artist
- Junior Developer
- Junior Web Developer



SCAN HERE TO EXPLORE

ELECTRICAL INSTALLATION.

Ready to rewire your future?

Our Electrical Installation courses offer a practical and in-depth route into one of the most vital and in-demand trades. Delivered in our fully equipped on-site workshops, you'll learn how to carry out a range of electrical tasks using industry standard tools. Alongside hands-on training, you'll explore the theory behind electrical principals gaining a sound understanding of a range of topics including lighting, AC theory, cable sizing and more. As well as this, you'll develop essential skills in health and safety, IT and teamwork – preparing you for real-world working environments in this thriving industry.

Courses are available at our following campuses:



Salaries in this industry can range from £32k-£50k

SKILLS.



- Critical thinking
- Problem solving
- Technical interpretation
- Attention to detail
- Practical abilities
- Communication

Level 1 Courses

C&G Diploma in Electrical Installation ^B

This qualification gives you the opportunity to pick up some core skills and knowledge and gives you the opportunity to progress onto either our Level 2 & 3 Electrical Installation qualifications.

Level 2 Courses

C&G Diploma in Electrical Installation ^{B W}

This qualification is designed for those who wish to learn, develop and practice the skills required for employment and/or career progression in the electrotechnology sector.

Level 3 Courses

T Level in Electrotechnical Engineering ^{B W}

This qualification will prepare learners for a career in the construction industry, with a focus on Electrical Installation.

Apprenticeships available in this area, see page 48.

PROGRESSIONS. PROGRESSIONS.

Progress onto our Higher Education Courses:

- HNC/HND in Electrical and Electronic Engineering
- For more information on our university level courses please visit our website HOWCOLLEGE.AC.UK



College to Career

Industry jobs include:

- Electrical Engineering Technician
- Electronics Engineer
- Computer Hardware Engineer
- Software Engineer
- Mechanical Engineer
- Trade Supervisor

Archie Hughes

L3 Electrical Installation

"The thing I enjoyed most about my course was the balance between practical and theory work and the tutors are very helpful as well."



SCAN HERE TO EXPLORE

ENGINEERING.

Ready to engineer your way into an exciting career?

Our Engineering courses are the ideal starting point for anyone looking to build a career in an innovative and high-demand industry. You'll have access to professionally equipped workshops, allowing you to gain practical experience using tools and equipment that reflect real-world engineering environments. Our Engineering courses offer strong progression routes into Apprenticeships, higher education and employment and open a wide range of career paths, from technicians to tool makers.

Courses are available at our following campuses:



Salaries in this industry can range from £32k-£47k



- Health and safety in the workplace
- Communications
- Engineering Science and Maths
- Engineering Drawing
- Computer Aided Drawing (CAD)
- Workshop practical skills

Level 2 Courses

Diploma in Engineering Technologies **B W**

This course gives learners knowledge and understanding of a broad range of engineering competencies. The qualification covers the intermediate knowledge, understanding and skills that are required by someone working in the engineering industry.

Level 3 Courses

Extended Diploma in Advanced Manufacturing Engineering **B W**

This qualification puts learning into the context of the world of work, giving students the opportunity to apply their research, skills and knowledge in relevant and realistic work contexts.

Apprenticeships available in this area, see page 48.

PROGRESSIONS. PROGRESSIONS.

Progress onto our Higher Education Courses:

- HNC/HND in Mechanical Engineering

For more information on our university level courses please visit our website HOWCOLLEGE.AC.UK



College to Career

Industry jobs include:

- Tool Maker
- Tool Fitter
- Engineering Technician
- Diagnostic Technician
- Prototype Technician
- Workshop Technician
- Design and Development Engineers
- Service Technician



Hannah Hartley

L2 Diploma in Engineering Technologies

"The thing I enjoyed most about my course was the amazing staff behind it, the whole way through my time at HoW College I felt supported and encouraged to achieve my very best! Each member of staff really listened and cared about everything I said."



SCAN HERE TO EXPLORE

HAIRDRESSING.

Want to take a cut of a career full of creativity?

Our Hairdressing courses offer an exciting and practical route into the vibrant world of Hairdressing. With a mix of real-life training with clients and industry-relevant theory, you'll develop the confidence and skills needed to work in salons or even start your own business. At our Worcester and Redditch campuses, you'll train in fully equipped commercial salons using professional products and tools, working on paying customers to build your experience.

Courses are available at our following campuses:



Salaries in this industry can range from £14k-£29k

Level 1 Courses

Diploma in Hairdressing **R** **W**

Ideal for learners passionate about the hairdressing industry, this course introduces fundamental hairdressing skills and knowledge. It is suitable for those who do not yet meet the entry requirements for higher-level study.

Level 2 Courses

Diploma in Womens Hairdressing **R** **W**

Aimed at those looking to start a career in Hairdressing, this course provides hands-on experience and foundational skills needed for working in a salon.

Level 3 Courses

Diploma in Womens Hairdressing **R** **W**

Designed for learners ready to progress in their hairdressing career, this course develops more advanced practical and technical skills, supporting progression into employment or further study.

Apprenticeships available in this area, see page 48.



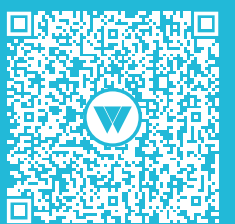
College to Career

Industry jobs include:

- Hairdresser
- Barber
- Salon Owner
- Senior Hair Stylist
- Colour Specialist
- Bridal Hair Specialist
- Receptionist
- Content Creator
- Hair Extension Specialist



- Communication Skills
- Customers service
- Teamwork
- Professionalism and Work Ethic
- Problem solving
- Digital Skills



SCAN HERE TO EXPLORE

INCLUSIVE LEARNING. THE SEN BASE.

Searching for an inclusive and encouraging environment that supports your next steps?

Here at HoW College, we're proud to offer a wide range of dedicated facilities and tailored courses for students with Special Educational Needs. From our mock-flat and sensory room to adapted classrooms and personalised learning plans, we create a supportive environment where every student can thrive. With a passionate and experienced team, we're committed to helping students build confidence, gain practical experience and achieve meaningful progress.

Courses are available at our following campuses:



Which Progressions course is right for me?

The Base

The Base is a discreet provision, within the main college, for our SEN students and is housed in a dedicated area at our All Saints Worcester campus and Redditch campus.

Life Skills

This course is designed for students mainly working from pre-entry to Entry Level 1 who have profound and multiple learning needs and disabilities to enable moving on from a school environment towards preparing for adult life.

Life and Independent Living Skills

Suitable for students with special educational needs to develop independent living and life skills.

Forward Focus

This course is for students who need a smaller group to improve confidence, self-esteem and develop the ability to work as part of a team. Students who are working at Entry 3 or just below and are interested in finding out more about the world of work.

Skills for Work

Suitable for students with special educational needs to develop personal, learning and work skills.

Job Path

This course is for students who are working at Level 1 and are preparing to enter the workplace.

Supported Internships

Suitable for students who are interested in progressing into an Apprenticeship or work. An EHCP is required for this course.



- Being organised
- Working outside
- Projects
- Completing tasks
- Work placement
- Practical Skills



SCAN HERE TO EXPLORE

NATIONAL STAR.



In Partnership with National Star, we specialise in education which supports young adults with disabilities in building independence and life skills.

Personalised programmes

The personalised programmes are designed to meet each learner's unique needs and aspirations. Depending on individual goals, programmes may include functional English and Maths, life skills, work-based learning, sensory exploration, social enterprise activities, and horticulture.

All pathways emphasise progress in key areas of the Education, Health, and Care Plan (EHCP), including:

- Physical and sensory development
- Self-care and independence
- Social and emotional health
- Communication and interaction
- Cognition and learning

Our small class sizes ensure that each student receives the dedicated time and support they need to prepare for life after college.

In addition to highly skilled tutors, our team includes physiotherapists, speech and language therapists, occupational therapists, behaviour support practitioners, and experienced care and support workers.

Entry requirements

There are no formal qualifications required to join this programme. Our admissions team will conduct an assessment to determine if this course is the right fit for you.

How will I be assessed?

Students typically work towards qualifications that align with their future goals. Evidence of learning is continuously gathered to support the achievement of your individual learning objectives and to track your progress. Common qualifications include:

- Functional English and Maths qualifications
- OCR Life and Living Skills
- City and Guilds Employability Skills



INCLUSIVE LEARNING. PROGRESSIONS.

Looking for a course that allows you to progress and thrive?

Our Progression courses are designed to help you build the essential skills and qualities needed to progress to a Level 2 course. Our dedicated team provides exceptional pastoral support, ensuring that every student receives personalised care and attention throughout their learning journey. You'll develop a wide range of transferable skills from communication and teamwork to time management and problem solving, we will work with you on these vital skills required for both education and employment. Our team also offers comprehensive careers advice and guidance, helping you explore your options and take confident steps toward your future goals.

Courses are available at our following campuses:



All of our Progression courses have a strong emphasis on boosting Maths and English for next steps in education or employment.

Which Progressions course is right for me?

Care ^R ^W

The Care course introduces students to Health, Social Care, and Early Years, developing key skills and knowledge.

Sports and Services ^R ^W

The Sports and Services course explores the sports and uniformed services sectors, building essential industry skills.

IT and Digital Media ^R ^W

The IT and Digital Media course introduces students to digital and creative sectors, building core skills.

Prospects ^R ^W

The Prospects course focuses on improving employability and personal development skills.

Pathways ^R ^W

The Pathways course is a seven week, part-time programme focused on personal development and engagement in projects within the local community, designed to build confidence, teamwork, and real world experience.

Impact ^R ^W

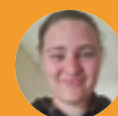
The Impact course is a 22 week part-time programme focused on improving personal development, projects in the local community.

Evolve ^R ^W

The Evolve course is an ESOL focused study programme for young people that supports English language development, strengthens Maths skills, and helps students settle into their new local community, while preparing them for progression onto further educational courses.

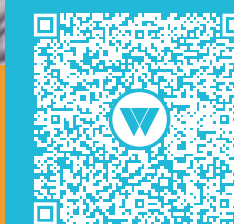


- Communication
- Teamwork
- Confidence
- Problem Solving
- Resilience
- Literacy and Numeracy



Ellie Jones
L1 Prospects

"If you choose to study at HoW College, you can expect welcoming staff, a wide range of courses suited to your interests and a place to sit down and unwind!"



SCAN HERE TO EXPLORE

HEALTH, SOCIAL CARE AND EARLY YEARS.

Are you passionate about helping young children or those in need?

Our Health and Social Care and Early Years courses offer a meaningful and rewarding pathway into careers that truly make a difference. Whether you're passionate about supporting others, working with children or contributing to the wellbeing of individuals and communities, these courses provide the knowledge, skills and practical experience needed to succeed. You'll learn in supportive environments with expert tutors who have worked in the industry and have access to real-world placements and routes into higher education and employment.

Courses are available at our following campuses:



£ Salaries in this industry can range from £19k-£39k

SKILLS.



- Communication
- Workplace conduct
- Team work
- Problem solving
- Safeguarding
- Time management

College to Career

Industry jobs include:

- Nurse
- Midwife
- Social Worker
- Sociologist
- Psychologist
- Childminder

Level 1 Courses

Care ^R ^W

The Care course introduces students to Health, Social Care, and Early Years, developing key skills and knowledge.

Level 2 Courses

Entry for the Early Years Practitioner ^R ^W

This course provides opportunities to acquire practical and technical skills relevant to a career in early years education.

Certificate in Health & Social Care ^R ^W

This course is an introduction to Health and Social Care incorporating knowledge and skills development relevant to the area.

Level 3 Courses

Extended Diploma in Health and Social Care ^R ^W

This qualification develops a deep common core of knowledge, understanding and skills in the sector. It allows learners to focus on a particular aspect of the sector through a selection of relevant units, including a route that focuses specifically on health studies.

T Level in Education and Early Years ^R ^W

This course develops knowledge and skills relevant to occupations in education and Early Years. The course incorporates academic learning alongside a significant work placement.

T Level in Health - Supporting the adult nursing team ^R ^W

This is a 2 year course encompassing classroom learning with substantial work place skill development in an NHS setting.

Apprenticeships available in this area, see page 48.

PROGRESSIONS. PROGRESSIONS.

Progress onto our Higher Education Courses:

- Foundation Degree in Early Years: 0-8
- Diploma in Therapeutic Counselling

For more information on our university level courses please visit our website

HOWCOLLEGE.AC.UK



Leonie Smith
L2 Early Years

"The teachers on this course are supportive, always there to help, and have taught me many skills useful for my future career. The new friends made and experiences I've had, including work placement in an early years setting, have improved my confidence."



SCAN HERE TO EXPLORE

HOSPITALITY AND CATERING.

Want the recipe to a successful career in this fast-paced industry?

Our Hospitality and Catering courses allow you to gain hands-on experience preparing and cooking delicious dishes while developing essential skills to thrive in a fast-paced kitchen environment. You'll be taught by our experienced staff in industry standard commercial kitchens, every lesson allows you to explore your passion for food and elevate your culinary expertise to meet the demands of a professional kitchen.

Courses are available at our following campuses:



Salaries in this industry can range from £13k-£35k

SKILLS.



- Attention to Detail
- Leadership
- Communication
- Teamwork
- Creativity
- Problem solving

Level 1 Courses

Certificate in Hospitality and Catering ^R

On this course you will study Food Preparation & Cooking as well as Food & Beverage Service through our Archers training restaurant and a mixture of skills/theory classes.

Certificate in Introduction to Culinary Skills ^W

This course will help you develop the cookery and safety skills that you need to work in the catering sector. You will attend the course for up to five days a week and learn through a mix of lectures and practical sessions.

Level 2 Courses

Diploma in Hospitality Services ^R

This one-year, full-time course, will provide you with the opportunity to refine your cooking skills to a professional level; cooking a variety of complex dishes while learning how to effectively manage and develop working relationships within our Archers training restaurant.

Diploma in Culinary Skills ^R ^W

This one-year, full-time course, will provide you with the opportunity to refine your cooking skills to a professional level; cooking a variety of complex dishes while learning how to effectively manage and develop working relationships within a kitchen environment.

Apprenticeships available in this area, see page 48.



College to Career

Industry jobs include:

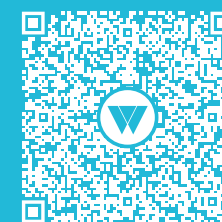
- Head Chef
- Baker
- Sous Chef
- Bar staff
- Restaurant Manager
- Hotel Manager



Josh Hall

L1 Hospitality and Catering

"During my time on the Level 1 Hospitality and Catering course with HoW College, I really liked being in the kitchen and restaurant and sometimes even working the bar. Having these facilities really helped me with my practical skills and will benefit me in my future career."



SCAN HERE TO EXPLORE

MEDIA PRODUCTION.

Want to step behind the camera and start shaping the future of TV, film and media?

Our Media Production courses offer an exciting pathway into the creative world of film, TV and digital content and provides the perfect foundation for building a successful career in the industry. You will have the opportunity to practice your skills in our state-of-the-art TV and recording studios, gaining hands-on experience with industry standard equipment including green screens, professional cameras, recording equipment and sound-proof rooms. From concept to creation, you'll have the chance to explore a range of roles including producer, director, editor and screenwriter.

Courses are available at our following campuses:



Salaries in this industry can range from £21k-£48k

SKILLS.



- Creativity
- Collaboration
- Critical Decision Making
- Industry Standard Presentation
- Digital Portfolio Creation
- Communication

Level 2 Courses

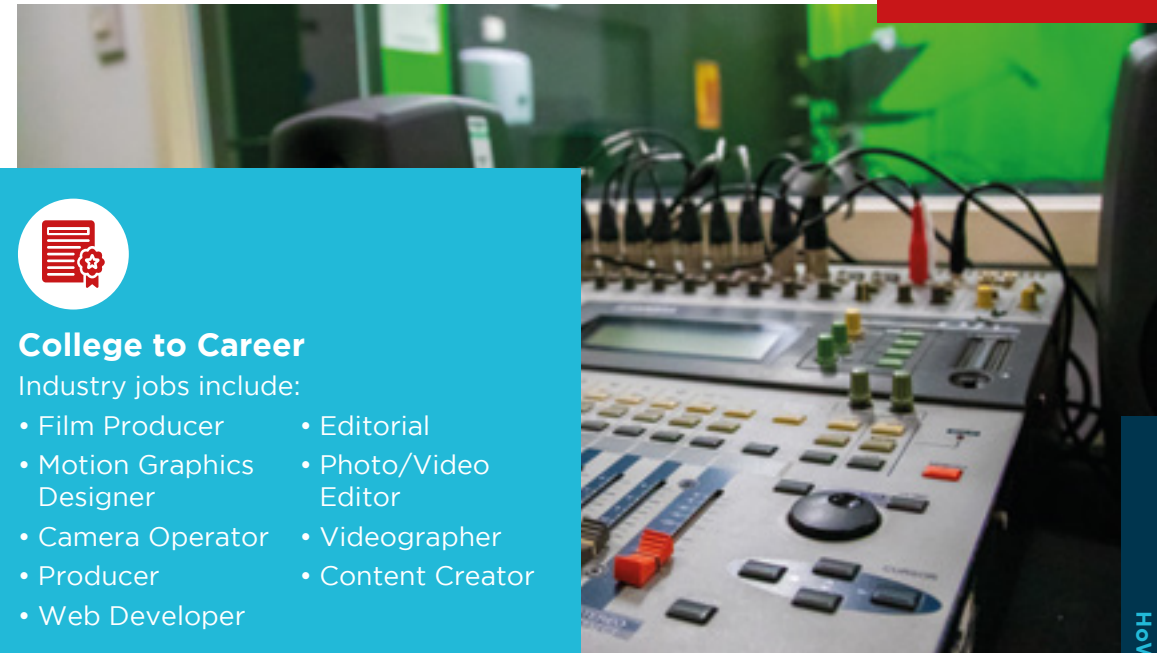
UAL Award and Diploma in Creative Media Production and Technology ^B

This one year course is aimed at those who have an interest in the TV & Film Industry, as well as photographic practice. We offer a broad investigation into short-film making, varying approaches to photography, and working within an industry standard film-studio. This course is perfect preparation for those wanting to progress onto Level 3.

Level 3 Courses

UAL Diploma and Extended Diploma in Creative Media Production and Technology ^B

Equivalent to three A-Levels, this two-year course offers a practical and theoretical approach to the fundamentals within TV & Film. Gaining hands-on experience with filming and editing interviews, documentaries, and music videos in addition to site-specific shooting, this course will allow you to expand and refine your film-making approach and skills. Coupled with research, the course offers contextual understanding for your film making.



College to Career

Industry jobs include:

- Film Producer
- Motion Graphics Designer
- Camera Operator
- Producer
- Web Developer
- Editorial
- Photo/Video Editor
- Videographer
- Content Creator

Noah Harrop

L3 UAL Extended Diploma in Creative Media Production and Technology (Television & Film)

"I liked the different types of coursework and the opportunity to pick our own topics for the assessments. The course team were really helpful and friendly and always encouraged me to push myself."



SCAN HERE TO EXPLORE

PERFORMING ARTS.

Looking for a course that allows your talent to take centre stage?

Whether you're drawn to the spotlight of the stage or passionate about production, this is the perfect course to launch your dream career in Performing Arts. With access to high-tech equipment and state-of-the-art facilities, you'll be immersed in practical learning experiences that mirror the demands of the industry. Enrolling onto one of our Performing Arts courses is the first step into a dynamic and rewarding creative journey.

Courses are available at our following campuses:



Salaries in this industry can range from £26k-£36k

SKILLS.



- Creativity
- Collaboration
- Critical Decision Making
- Industry Standard Presentation
- Digital Portfolio Creation
- Communication

Level 2 Courses

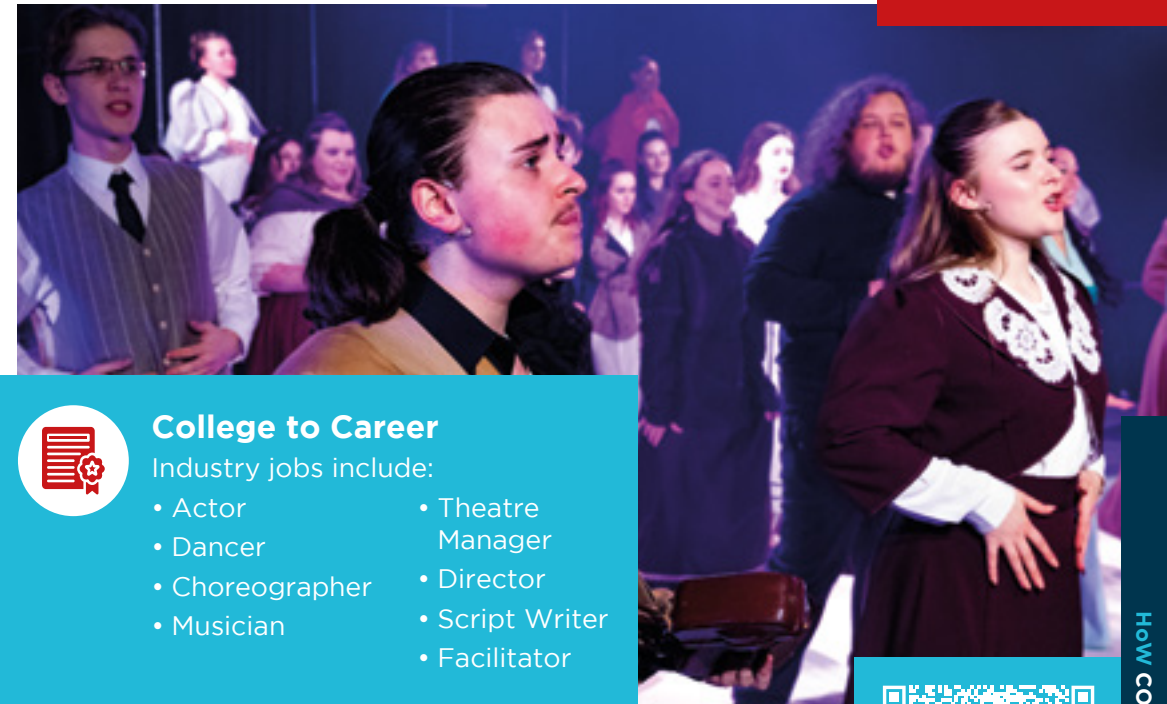
UAL Diploma in Performing and Production Arts ^W

During this one-year course you will experiment with various approaches to singing, dancing, and acting. You will be guided through public facing showcases, and experiment in developing a collaborative radio show. Coupled with learning new research approaches to Performing Arts, this course is structured to develop skills needed in an ever-changing Performing Arts Industry.

Level 3 Courses

UAL Diploma and Extended Diploma in Performing and Production Arts ^W

Equivalent to 3 A-Levels, this two-year course offers a practical and theoretical approach to Performing Arts and Production. Studying the work of important creative practitioners through research, will then allow you to enhance your own performance and understanding of this. This course will give you the opportunity to perform in front of live audiences, sometimes devising your own or group pieces, in addition to showcases and musical theatre shows.



College to Career

Industry jobs include:

- Actor
- Dancer
- Choreographer
- Musician
- Theatre Manager
- Director
- Script Writer
- Facilitator

Natasha Louise Cartwright

L2 Diploma in Performing and Production Arts

"I enjoyed my course because it gave me great practical ideas for my future in Performing Arts; the tutors and support workers were wonderful. One of the best aspects of the course was that it improved my self confidence."



SCAN HERE TO EXPLORE

PUBLIC SERVICES.

Have you got the skills, commitment and resilience to thrive in the Public Services sector?

Our Public Services courses are designed to equip you with the knowledge, confidence and practical skills needed to pursue a range of rewarding career paths. Whether you're aiming for a future in the Army, RAF or Royal Navy or are looking to serve your community through the police, fire or prison services, these courses lay the foundation for success in a variety of vital and impactful roles. Through a blend of classroom learning and hands-on experience, you'll gain a deep understanding of the demands and responsibilities of public service careers.

Courses are available at our following campuses:



Salaries in this industry can range from £25k-£41k

SKILLS.



- Collaboration
- Leadership
- Creativity
- Communication
- Critical thinking
- Problem solving

Level 1 Courses

Sports and Services **R** **W**

The Sports and Services course explores the sports and uniformed services sectors, building essential industry skills.

Level 2 Courses

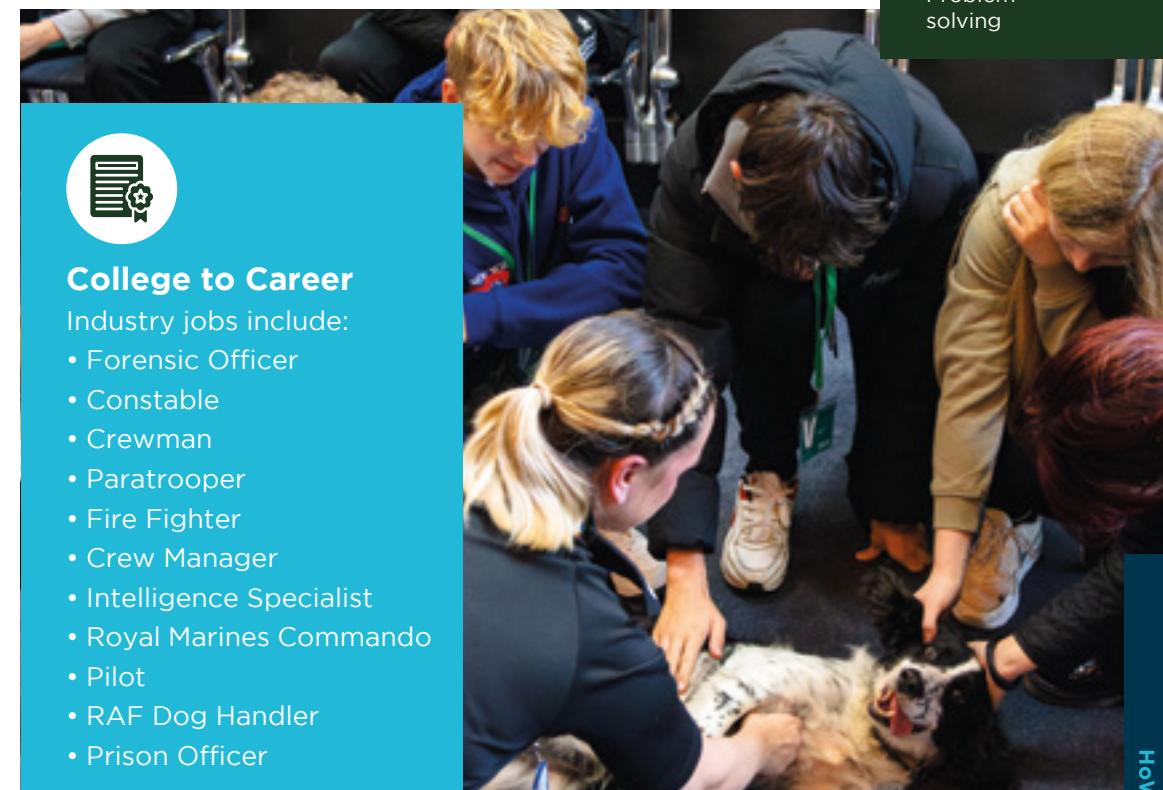
Extended Certificate in Public Services **R** **W**

This one-year preparatory course is suitable for those learners who wish to progress onto the Level 3 Extended Diploma in Public Services.

Level 3 Courses

National Extended Diploma in Uniformed Protective Services **R** **W**

Equivalent to Three A-Levels, this course is best suited to learners who wish to progress on to higher education programme or a career in Public Services.



College to Career

Industry jobs include:

- Forensic Officer
- Constable
- Crewman
- Paratrooper
- Fire Fighter
- Crew Manager
- Intelligence Specialist
- Royal Marines Commando
- Pilot
- RAF Dog Handler
- Prison Officer

Shanice Bates

L2 Public Services

"HoW College has helped me grow academically and as an individual. I thoroughly enjoyed the course content because it involved both theory and practical work and this enabled myself and my peers to gain a better perspective of a career within the Public Services sector."



SCAN HERE TO EXPLORE

SPORTS.

Ready to kick off your career in Sport?

Whether you're fascinated by anatomy and physiology or passionate about coaching and performance, our Sports courses offer the perfect starting point to turn your interest into a career. You'll learn in our state-of-the-art gym and leisure facilities, gaining hands-on experience and industry-relevant knowledge that prepares you for success in the world of sports, fitness and health. With options ranging from Level 1 to HND, we offer courses to suit every need and interest.

Courses are available at our following campuses:



£ Salaries in this industry can range from £13k-£29k

SKILLS.



- Collaboration
- Leadership
- Creativity
- Communication
- Critical thinking
- Problem solving

Level 1 Courses

Sports and Services **R** **W**

The Sports and Services course explores the sports and uniformed services sectors, building essential industry skills.

Level 2 Courses

First Certificate in Sport **R** **W**

This one-year preparatory course suitable for those learners who wish to progress onto the Level 3 Extended Diploma in Sport.

Level 3 Courses

National Extended Diploma in Sports and Exercise Sciences **R**

Equivalent to three A-Levels, this course is best suited to learners who wish to progress in to higher education programmes in the Sport and Exercise Science sector.

National Extended Diploma in Sport **R** **W**

Equivalent to 3 A-Levels, this course is well-suited to learners who wish to progress to higher education or enter employment in Sport.

PROGRESSIONS. PROGRESSIONS.

Progress onto our Higher Education Courses:

- HND in Sport: Coaching and Leadership Management
- HND in Sport and Exercise Science: Coaching Science

For more information on our university level courses please visit our website HOWCOLLEGE.AC.UK



College to Career

Industry jobs include:

- Fitness Instructor
- Sports Therapist
- Sports Coordinator
- Performance Analyst
- Nutritionist
- Research Assistant
- PE Teacher



Evah Melsom

L3 National Extended Diploma in Sports

"My time at HoW College was enjoyable and productive. The staff were friendly, knowledgeable and approachable. The flexibility of class and assignment times worked perfectly for my schedule."



SCAN HERE TO EXPLORE

Heart of Worcestershire College's Football Academy has been running successfully for over 20 years.



Our high-achieving academy offers full-time sports qualifications from Level 2 to HND. Students will work on strength and conditioning, fitness, and football skill development. The level of training, performance analysis and playing is of a high standard, and students who want to play for the academy must be prepared to work hard on developing their academic knowledge and skills, as well as their talent as a footballer. The academy train and play on a state of the art astro-turf pitch, and use cutting-edge technology including VEO performance analysis and GPS movement tracking via Stat Sports.



CALLING FEMALE FOOTBALLERS!

We are excited to announce the launch of our brand new HoW Women's Football Academy - a programme designed to give female players the perfect balance of elite football training and academic achievement. Sharing all the current opportunities and benefits that our established Men's Football academy has to offer; our Reaching Higher strategy aims to create more opportunities than ever for women in the football industry.

WORCESTER SPORTS COURSES ONLY



REDDITCH UNITED FOOTBALL & EDUCATION PROGRAMME IN PARTNERSHIP WITH HEART OF WORCESTERSHIRE COLLEGE



UNLOCK YOUR POTENTIAL ON AND OFF THE PITCH

Combine your passion for football with academic achievement through our unique Football & Education Programme in partnership with HoW College. Designed for aspiring athletes, this course offers the perfect balance of elite training and college-level qualifications at HoW College.

What We Offer:

- **Level 3 Extended Diploma in Sport** - Equivalent to 3 A-Levels, paving the way to university and careers in sport.
- **Professional Football Experience** - Train and compete on our 3G pitch, represent Redditch United in top competitions, and access pathways to our First Team.
- **Career-Ready Skills** - Gain FA Coaching and Refereeing qualifications, plus hands-on work experience within the club.
- **Exclusive Opportunities** - Benefit from links to professional and semi-professional clubs, UEFA A licensed coaching, and competitive fixtures.

Join a programme that champions both sporting excellence and personal development and get all the benefits from being a HoW College student. For more details on how to apply contact: academy@redditchunited.co.uk

TRAVEL AND TOURISM.

Ready to take off into a career in Travel and Tourism?

When it comes to a career in Travel and Tourism, you might picture bustling airports, sunny resorts and guided day trips but there's so much more to discover. Our Travel and Tourism courses go above and beyond the surface and provide a deep understanding of the industry and learning how to handle real-world scenarios with professionalism and confidence. Our expert tutors and practical learning environments will prepare you for a dynamic and rewarding career in the Travel and Tourism industry.

Courses are available at our following campuses:



Salaries in this industry can range from £18k-£36k

SKILLS.



- Introduction to travel products and services
- Customer service and sales techniques
- Presentation and communication skills
- Destination knowledge and itinerary planning
- Cabin crew and safety
- Time management, teamwork and confidence building

Level 2 Courses

Extended Certificate in Travel and Tourism **R W**

The level 2 certificate in Travel and Tourism is designed for learners who want to go on to further learning at Level 3 or require the knowledge to proceed into a relevant Travel and Tourism role.

Certificate to Cabin Crew **R W**

The Level 2 Cabin Crew is delivered alongside the second year of the Level 3 extended diploma, this qualification equips learners with the foundational skills and knowledge for a career in cabin crew.

Level 3 Courses

Extended Certificate in Travel and Tourism **R W**

The Level 3 extended certificate in Travel and Tourism is an introduction to the Travel and Tourism Industry including products and services, employment opportunities and the transferable skills needed to succeed. This is a one year course and students need to complete this to join us on the second year Extended Diploma.

Extended Diploma in Travel and Tourism **R W**

The Level 3 Extended Diploma in Travel and Tourism extends student knowledge and gives learners the skills to work in the huge Travel and Tourism sector. It also provides transferable skills for multiple related industries and substantial UCAS points.



College to Career

Industry jobs include:

- Cabin Crew
- Check-in Staff
- Security Officer
- Event Coordinator
- Attractions Manager
- Cabin Steward
- Tour Guide
- Travel Agent



SCAN HERE TO EXPLORE



Did you know HoW College can take your education further and higher?

Everyone has great potential, and our Higher Education courses will help unlock yours.

From HNCs, HNDs and university level courses to Accredited Awards, Certificates and Diplomas from awarding bodies such as CIM, CMI, AAT, CIPD, ILM and more, there's something for everyone. Continuing your studies with us offers a flexible, supportive alternative to university. With smaller class sizes, more one-to-one time with tutors and fast-track qualification options, our Higher Education courses are designed to fit around your life while helping you achieve your goals.

We offer courses in:

- Accounting and Bookkeeping
- Business and Management
- Computing, IT, Games Design and Digital Media
- Early Years
- Human Resources

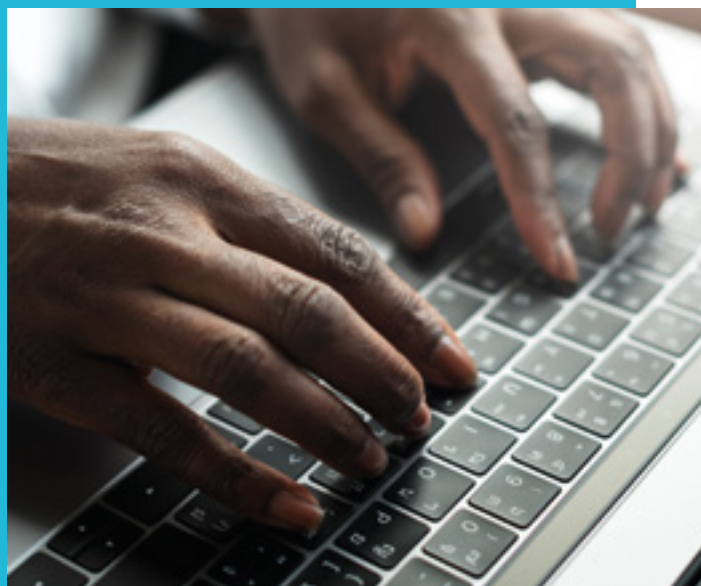
- Leadership and Management
- Marketing
- Professional Development
- Sports and Fitness
- Teacher Training



ADULT SKILLS AND COMMUNITY.

Looking for a course that matches your ambition?

With five dedicated departments, our Adult and Community provision ensures equal access to learning opportunities tailored to your current skills and experience. Each course is designed to support your personal and professional growth, offering clear progression routes into further learning or meaningful employment.



ESOL - English for Speakers of Other Languages Pre-Entry to Level 2

Adult Skills - Functional Skills English and mathematics

Entry Level 1 to Level 2 GCSE English and mathematics

IT Skills Centre - Essential Digital Skills (EDSQ) at Entry Level 3 and Level 1

Level 2 Award in Digital and IT Skills

Level 2 Certificate in Digital and IT Skills

Level 2 Extended Certificate in Digital and IT Skills

Level 1 Award in Cyber Security

Futures - Level 1 Certificate in Employability and Development Skills - Pathway to Care

Level 1 Certificate in Work Ready - Pathway to Teacher Assistant

Level 1 Certificate in Employability and Development Skills - Pathway to Retail

Level 1 Certificate in Skills for Working in Business and Administration

Level 1 Award in Preparing to Work in Schools

Community Learning - non-accredited courses in Cooking, Art, Sewing, Mindfulness, Health, Well-being and ESOL



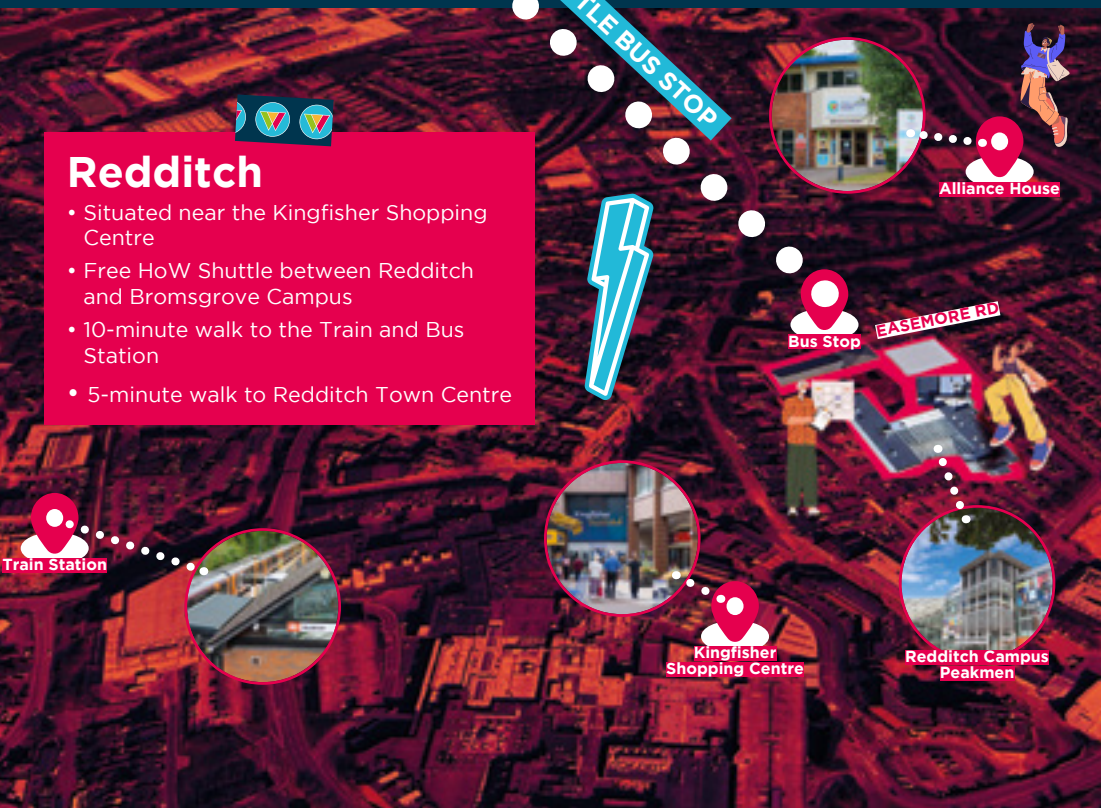
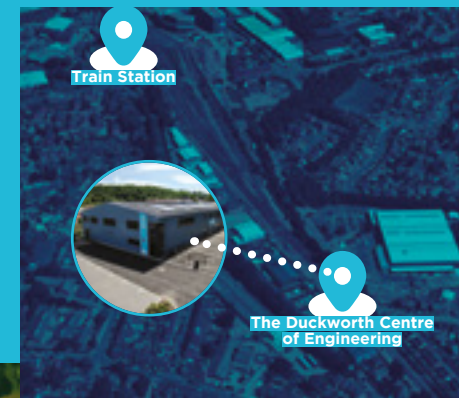
Svitlana Hlovatska
ESOL Level 2

"HoW College holds a special place in my heart. I'm deeply grateful for the time I spent at this incredible college. I didn't just gain knowledge - I found inspiration, genuine support, and the confidence to believe in myself. Every day felt filled with care, encouragement, and a true love for helping students thrive. Thank you from the bottom of my heart to the entire HoW College team - you've been a guiding light on my journey toward new horizons."

KEY LOCATIONS.

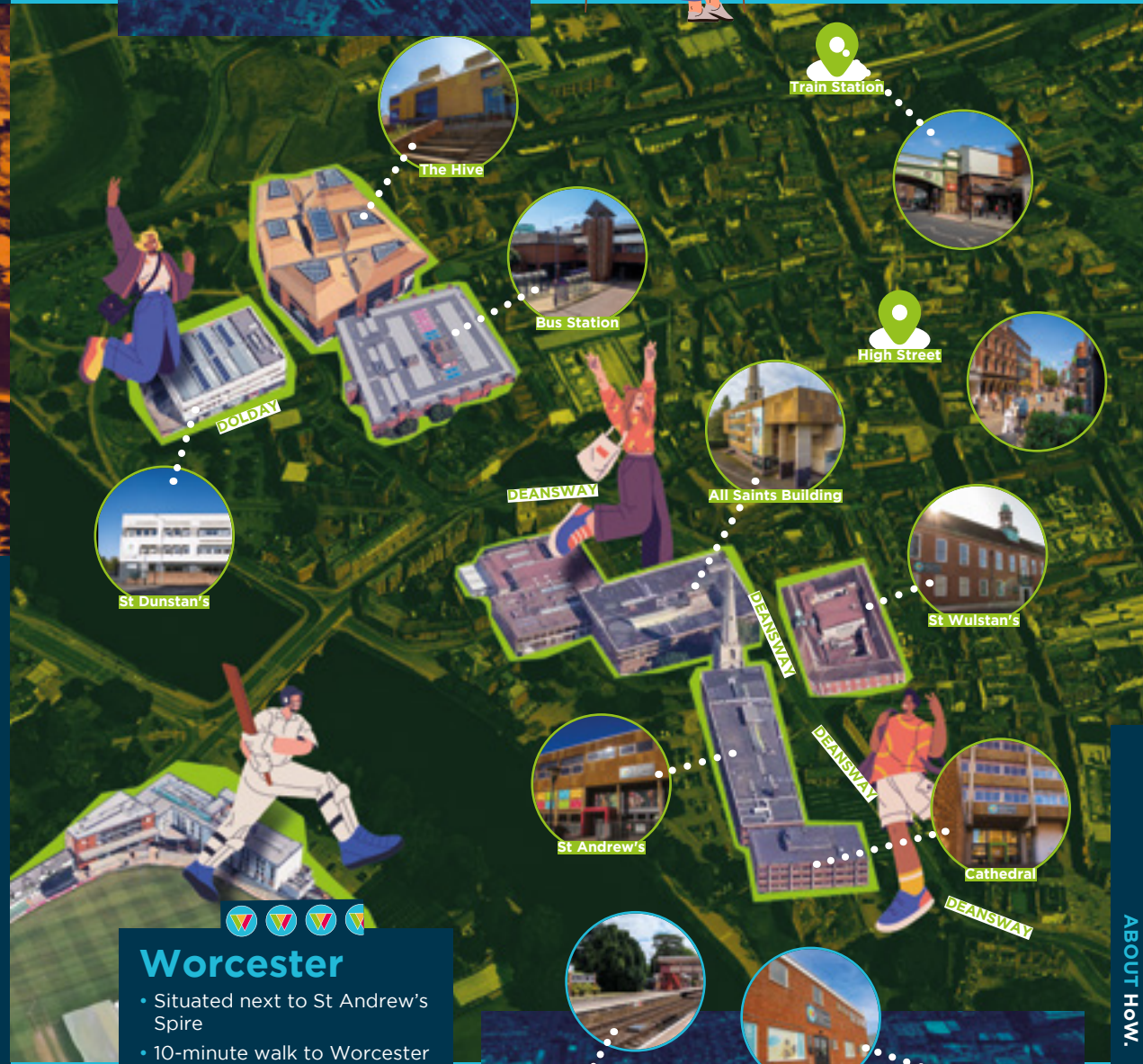
Bromsgrove

- Situated next to David Lloyd and the Artrix
- Free HoW Shuttle between Bromsgrove and Redditch Campus
- 10-minute walk to Bromsgrove Bus Station
- 10-minute walk to Bromsgrove Town Centre



Redditch

- Situated near the Kingfisher Shopping Centre
- Free HoW Shuttle between Redditch and Bromsgrove Campus
- 10-minute walk to the Train and Bus Station
- 5-minute walk to Redditch Town Centre



Worcester

- Situated next to St Andrew's Spire
- 10-minute walk to Worcester Foregate Street Train Station
- 10-minute walk to Worcester Crowngate
- 5-minute walk into Worcester City Centre

HOW CAN WE HELP YOU.

Our friendly and experienced teams are on hand here at HoW College to answer any enquiries you may have.

General
info@howcollege.ac.uk

Careers
 Malvern and Worcester
 01527 572674
careers@howcollege.ac.uk

Bromsgrove and Redditch
 01527 572662
careers@howcollege.ac.uk

Admissions
 01905 743456

FE Admissions: feadmissions@howcollege.ac.uk

HE Admissions: headmissions@howcollege.ac.uk

Professional Admissions: profadmissions@howcollege.ac.uk

Commercial
 Fountains: 01905 725648

Fusion: 01527 572860

Archers Restaurant: 01527 572874

Student Financial Support
 Worcester Campus
studentfinance-worcester@howcollege.ac.uk

Bromsgrove and Redditch Campus
studentfinance-redditch@howcollege.ac.uk



HOW TO FIND US.

Bromsgrove Campus

Slideslow Drive
 Bromsgrove
 B60 1PQ
 t. 01527 570020

Redditch Campus

Peakman Street
 Redditch
 B98 8DW
 t. 01527 572522

The Duckworth Centre of Engineering

Great Western Avenue,
 Worcester WR5 1DU

Malvern Campus

Spring Lane
 Malvern
 WR14 1AL
 t. 01905 725526

Worcester Campus

Deansway
 Worcester
 WR1 2JF
 t. 01905 725555

Follow HoW







[@how_college](https://www.instagram.com/how_college)

**DISCOVER.
EMPOWER.
TOGETHER.**

OUR COURSES.

Access to Higher Education

Apprenticeships

Art and Design

Automotive

Beauty Therapy

Business and Management

Computing

Construction

Digital Media and Games Design

Electrical Installation

Engineering

Hairdressing

Inclusive Learning

The SEN Base

Progressions

Health, Social Care and Early Years

Hospitality and Catering

Media Production

Performing Arts

Public Services

Sports

Travel and Tourism

Higher Education

Adult Skills and Community



HOWCOLLEGE.AC.UK



Recycle Paper



**European Union
European Social Fund
Investing in jobs and skills**