



fountains

hair & beauty



fountains

hair & beauty



HEART OF
**WORCESTERSHIRE
COLLEGE**

Based in the heart of Worcester, the College welcomes you into Fountains, the training centre for hair, beauty and barbering students at Heart of Worcestershire College. Escape the pressures of a hectic lifestyle and treat yourself to a range of treatments and services at reduced prices. Your experience in our salon will have a high degree of attention supervised by our expert industry staff.

Whether this is your first visit to Fountains or you have been a regular visitor to our salons for years, we encourage you to spend time enjoying the outstanding range of treatments and services we have to offer.

Students are trained to industry standards and are supervised closely throughout your visit.

01905 725648
fountains@howcollege.ac.uk



01905 725648 fountains@howcollege.ac.uk

HAIR

CUT & STYLE

	Level 2	Level 3	Duration
Dry Cut	£3	£5	60 mins
Cut & Blow-dry / Set	£8	£10	90 mins
Blow-dry / Set	£3	£5	90 mins
Hair Up	£3	£10	60 mins
Re-style	-	£12	90 mins
Perm (Short)	£10	£15	150 mins + F/S
Perm (Long)	-	£20	150 mins + F/S
Child Cut	£3	£3	60 mins
Conditioning	£5	£5	60 mins
Intensive Conditioning Treatment	£10	-	60 mins

PLEASE NOTE

- Add 15 minutes for consultation.
- Times are only approximate. Student level should also be taken into consideration.
- Please allow an extra 30 minutes for car park time.
- F/S = Finishing Service - add to duration time.
- A skin test is required 48hrs prior to colour services.

AGE RESTRICTIONS

- All children under 16 must be accompanied by an adult to receive a treatment or service.
- Children under 5 are not permitted in hairdressing salons.
- All children under 16 are not permitted to have colour services.

COLOURING

Colour Fresh (Semi)

Conditioning colour treatment.
Adds tone & can last up to 8 washes.

Colour Touch (Quasi)

Adds tone or colour.
Can last up to 24 washes.
Will not lighten.

Regrowth

Hide unsightly roots, colour

Bleach / Ombre

Full Head Colour

This is a complete coverage of permanent colour to either lighten or darken the hair.

T-Section Foils (Short)

Colour to the top layer of hair

T-Section Foils (Long)

Colour to the top layer of hair

T-Section Foils & Colour (Short)

Colour to the top layer of hair with a colour in between

T-Section Foils & Colour (Long)

Colour to the top layer of hair with a colour in between

Full Head Foils (Short)

Full Head Foils (Long)

Full Head Foils & Colour (Short)

Level 2

from **£10**

from **£14**

from **£16**

-

from **£20**

from **£12**

from **£15**

from **£20**

from **£27**

from **£25**

from **£30**

from **£30**

Level 3

from **£12**

from **£16**

from **£20**

from **£20**

from **£23**

from **£15**

from **£18**

from **£23**

from **£30**

from **£30**

from **£35**

from **£35**

Duration

60 mins
+ F/S

120 mins
+ F/S

60 mins
+ F/S

180 mins
+ F/S

75mins
+ F/S

80 mins
+ F/S

80mins
+ F/S

120 mins

120 mins
+ F/S

80 mins
+ F/S

80 mins
+ F/S

80 mins
+ F/S

	Level 2	Level 3	Duration
Full Head Foils & Colour (Long)	from £35	from £40	80 mins + F/S
Full Head Colour Cleanse plus re-colour service	-	from £35	75 mins + F/S

Prices include cut, plus blow-dry/set if required

HIGHLIGHTS/LOWLIGHTS

Hair is pulled through a plastic cap and bleach or colour is applied to exposed hair only.

Short / Medium Hair, one colour	from £7	from £15	80 mins + F/S
--	----------------	-----------------	-------------------------

PLEASE NOTE

- Add 15 minutes for consultation.
- Times are only approximate. Student level should also be taken into consideration.
- Please allow an extra 30 minutes for car park time.
- F/S = Finishing Service - add to duration time.
- A skin test is required 48hrs prior to colour services.



01905 725648 fountains@howcollege.ac.uk

BEAUTY

EYE TREATMENTS

SPECIAL OFFER: 3 eye treatments for £8

Eyelash Perming

Level 2

£5

Duration

30 mins

Eyebrow Shape

£3

30 mins

Eyelash Tint

£3

30 mins

Eyebrow Tint

£3

30 mins

Please note A glue and tint test is required 48 hrs before treatment.

MANICURE&PEDICURE

Get beautiful and healthy, natural nails.
Heat treatments use heated mitts / boots or paraffin wax to keep the skin beautifully soft.

Luxury Manicure (inc. Heat Treatment)

£10

65 mins

Manicure

£8

60 mins

Luxury Pedicure (inc. Heat Treatment)

£12

65 mins

Pedicure

£10

45 mins

Gel Nail Overlay

£10

60 mins

Soak Off

£5

30 mins

Artwork per Nail

£1

10-30 mins

Express Manicure

£4

40 mins

Express Pedicure

£3

60 mins

WAXING

	Level 2	Duration
Upper Lip or Chin	£3	30 mins
Eyebrows	£3	30 mins
Underarm or Bikini	£5	30 mins
Forearm	£5	30 mins
Half Leg	£8	60 mins
Full Leg	£10	60 mins
SPECIAL OFFER ANY THREE AREAS OF WAXING	£15	-

MASSAGES

	Level 3	Duration
Back Massage	£10	45 mins
Full Body Massage	£15	60 mins
Pre-Blend Aromatherapy Massage Relax Revive Detox	£15	60 mins
Tension Back Massage (includes audio sonic/G5/infrared)	£15	75 mins

Add on treatments available for all above massages at no additional cost:

G5 Body Massage / Audiosonic / Infrared

	Level 3	Duration
Hot Stone Massage Combines thermotherapy with massage technique. Relaxes muscles, soothes aches and pains. Hydrates, relieves stress, improves circulation.	£18	60 mins
Indian Head Massage Can be carried out with oil on the skin or over clothes.	£10	45 mins

FACE TREATMENTS

(Caci) Non Surgical Facial

Low intensity direct electrical current rather than surgery. The treatment lifts the skin and tones the muscle to prevent sagging. After a thorough cleanse, hypoallergenic pads are placed on the main muscles of the cheeks, jaw line and neck for firming and toning.

Add on **Hydro Mask** for additional cost

Level 3

£25

Duration

75 mins

£5

15 mins

Microdermabrasion Facial (Crystal Clear)

A process and not an aggressive treatment, a gentle exfoliation which is deep and works right into the skins surface to remove dead skin cells whilst re-surfacing the skin. Correction work can be done on areas of concern it helps to draw out any impurities, reduce fine lines and wrinkles, remove black heads, whiteheads and helps with pigmentation and sun damaged skin. The final phase of this treatment will gently lift the muscles in the face.

£25

75 mins

Galvanic Facial with High Frequency

Deep cleanses the skin of impurities, improves oxygenation and circulation and reduces the appearance of fine lines & wrinkles. Good for oily skin and prevents stubborn acne by shrinking enlarged pores.

Not suitable for very sensitive skins.

£16

75 mins

EMS (Electrical Muscle Stimulation)

Stimulates/tones/strengthens muscles in the face, helping to firm facial muscles, improve skin lustre, energise tired skin and encourage cellular regeneration.

£16

75 mins

Vacuum Suction Facial

Improves and treats lymphatic circulation, reduces puffiness and fines lines and brightens the skin.

£16

75 mins

Milia Extraction

Free

20 mins

Level 3 Treatment Packages available from time to time.

Contact 01905 725648 or fountains@howcollege.ac.uk for more details.

MAKE-UP

Make Up

- Mature make-over
- Day / Evening
- Fantasy
- Wedding / Prom / Special Occasion

£5

45 - 60
mins

TANNING TREATMENTS

Spray Tan (Sienna X)

£10

30 mins

Manual Tan (Sienna X)

£10

60 mins

TREATMENTS FOR MEN

Hand and Nail Grooming

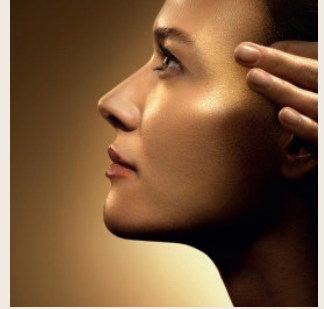
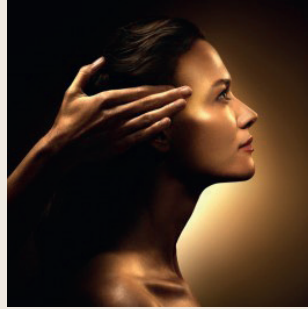
£5

30 mins

Chest / Back Wax

£8

30 mins



DECLÉOR FACIALS

A sensation of extreme effectiveness and absolute well-being: 75 minutes of relaxation. Each facial features a concentrate of very targeted active ingredients, with renowned properties, that will fulfill the needs of even the most demanding skin.

Moisture Quench / Ultimate Vitamin Glow (Hydra force essential expert facial)

Intensely replenishes, quenches the skin's thirst and immediately relaxes with pure fruit and floral extracts and active essential oils of Neroli, petitgrain and sandalwood.

For the most dehydrated skin.

Oxygenation Pure @ Matt (Matt and Purify expert facial)

Balances, purifies and refines the skin's texture with aquatic plant extracts and active essential oils of Ylang Ylang, Geranium and rosemary.

For oily to combination skin.

Divine Nutrition (Divine Nutrition nourish expert Facial)

Nourishes, comforts and strengthens with plant milks and active essential oils of marjoram, Myrrh and lavender.

For skin in need of comfort.

Standard Facial

Level 2

£15

Duration

75 mins

£15

75 mins

£15

75 mins

£10

60 mins

HOW TO FIND US

fountains hair & beauty

Heart of Worcestershire College,
St Dunstan's,
The Butts,
Worcester,
WR1 3PA
01905 725648
fountains@howcollege.ac.uk





01905 725648
fountains@howcollege.ac.uk



HEART OF

WORCESTERSHIRE

COLLEGE