



SKILLS FOR WORK  
SUPPORT INTO  
EMPLOYMENT  
**YEAR 11**  
**ACTIVITY PACK**

THE  
BASE



HEART OF  
WORCESTERSHIRE  
COLLEGE

**Across all our courses we aim to help you prepare for adulthood and reach your goals.**

**We have 3 main themes:**

- Independence
- Communication
- Social and Employability Skills

**Each course will include the following:**

- A main qualification
- English and maths
- Work experience
- Tutorials
- Enrichment

**Getting to know you**

We know this is a difficult time and usually we would be meeting you at the College.

**BUT**

We thought you might like to have a go at our challenges!

HOW many activities can you complete??

This will give you an idea of some of the subjects we cover at college.

If you complete any of our challenges, please send them to:

Sally Arblaster-Redditch [sarblaster@howcollege.ac.uk](mailto:sarblaster@howcollege.ac.uk)

Debbie Morris- Worcester [dmorris@howcollege.ac.uk](mailto:dmorris@howcollege.ac.uk)

Or keep your work in a folder and bring it to college.

## CHALLENGE 1

### The Environment

Our planet Earth is our home. As you may already know our planet is affected by us humans in a negative way which causes ENVIRONMENTAL ISSUES. You have probably heard about them already, seen tv programmes about them or read about it in magazines or newspapers. This task is all about introduction to the environment unit which is part of the Horizons course at HoW College.

First, I would like you to watch some short videos (links below) and write some notes about them. You can pause and rewind as many times as you want. There will be some words that you might not know, you can write them down and create your own environmental glossary. See if you can find these words:

Pollution	Global Warming	Overpopulation	Water Contamination
Waste Disposal	Climate Change	Loss of Biodiversity	Deforestation
Ozone Layer Depletion	Acid Rain	Urban Sprawl	Public Health Issues
Plastic		Microbeads	Plastic Waste

Research them on the internet and write down definitions.

There will also be word naming chemical substances which you don't need to know. The videos are just to give you some general knowledge about the environment issues.

[www.youtube.com/watch?v=G4H1N\\_yXBiA&t=71s](http://www.youtube.com/watch?v=G4H1N_yXBiA&t=71s)

[www.youtube.com/watch?v=EtW2rrLHsO8](http://www.youtube.com/watch?v=EtW2rrLHsO8)

[www.youtube.com/watch?v=Ok8rMT2KCy0](http://www.youtube.com/watch?v=Ok8rMT2KCy0)

[www.youtube.com/watch?v=aU6pxSNDPhs&t=34s](http://www.youtube.com/watch?v=aU6pxSNDPhs&t=34s)

[www.youtube.com/watch?v=gghOPtk3VGE&t=135s](http://www.youtube.com/watch?v=gghOPtk3VGE&t=135s)

[www.youtube.com/watch?v=3vijLre760w](http://www.youtube.com/watch?v=3vijLre760w)

[www.youtube.com/watch?v=HQTUWK7CM-Y&t=67s](http://www.youtube.com/watch?v=HQTUWK7CM-Y&t=67s)

Whilst watching these videos you will find that there are many National Geographic short videos showing our beautiful planet that you might want to watch too.

After you watch each video write down everything you understood and any questions you might have. You can even add some pictures.

I would like you to think about:

What is climate change?

What are the environmental issues?

What is it that people do that affect the environment in a negative way?

You can get additional information on environmental issues on this website. (You might need to ask your parent or carer to help you with the reading).

[www.conserve-energy-future.com/top-25-environmental-concerns.php](http://www.conserve-energy-future.com/top-25-environmental-concerns.php)

Next, I would like you to prepare either a poster, a PowerPoint presentation, a booklet or a scrapbook about what you and your family can do to for the environment. You need to talk about the things you can do on a daily basis, include some of the new words you learned and make sure you include pictures or drawings.

**Have fun!**



## Challenge 2

### Activity Task Sowing or Planting

<p>Objectives: To be able to take part in family activity/or on your own</p> <p>Buy packets of seeds e.g. online or supermarket on your weekly shop</p> <p>You may have family or friend who will share some plants etc</p> <p>Prepare pots or ground (look online YouTube for extra help if required)</p>
<p>Instruction: Gardening with the family (if applicable)</p>
<p>Explain what you have planted and why</p> <p>e.g. cost, suitable soil, planting pots or borders etc.</p>
<p>Make a list of instructions on how to plant seeds or plants.</p> <p>Draw the garden and where you have planted the seeds e,g pots, or garden border.</p> <p>Take pictures if possible, to record in your folder etc.</p>
<p>Monitor seeds or plants</p> <p>Keep watered daily, show photo evidence of them growing or draw pictures. e.g. June, July , August ongoing monitor how they are developing.</p> <p>Take a picture of them when fully grown.</p>
<p>Take a photo or draw a picture when they look their best or have been harvested</p> <p>e.g. carrots, potatoes or sweet peas</p>
<p>Plan and discuss with your family what else you could grow and harvest?</p>
<p>Feedback from family (if applicable)</p> <p>Research online any other plants you feel you would like to grow with the reason why?</p> <p>Make a collage of plants and flowers to put into your folder.</p> <p>Design a garden which includes;</p> <p>A shed, play area, vegetable plot and flower beds. You can use any resources such as paints, pencil crayons, fabric, clay, cardboard or an online website to plan your garden.</p>
<p>Overall comment on:</p> <p>What went well?</p> <p>Where there any issues?</p> <p>How could you improve?</p> <p>How would you plan to develop your garden next?</p>

### Challenge 3

#### Work Experience

Have you taken part in any work experience/volunteering before? If so, where?

During this course you will be expected to complete work experience, either as part of a group or on your own. Do you have an idea of where you would like to complete this?

What skills would you like to gain from completing your work experience hours?

## Challenge 4

### Activity Task - Create a Still life Drawing

<p>Objectives: To be able to take part in family activity/ or on your own</p> <p>Discuss what you would like to draw, check with family (if applicable)</p> <p>Set up the still life, this could include a vase of flowers, a plant, sea shell etc</p> <p>You could explore around the house or garden an interesting item or several items which would or could be displayed together.</p> <p>Making choices, following instructions research on the internet if required.</p>
<p>Instruction Still life drawing equipment needed</p> <p>Equipment needed, items to draw, paper or card, pencil or pencil crayons.</p>
<p>Produce a piece of art work</p> <p>Discuss with family or make your own choice</p> <p>What you would like to draw?</p> <p>Take your time and draw your items, you need to look carefully and study the items. This activity needs to take about 30 minutes if you are studying your items in depth. Once you have complete on drawing you may want to start again and see where you can improve.</p>
<p>Discuss with your family if they feel you can improve any area of your drawing. Listen to their ideas.</p> <p>You may want to complete this activity with your family.</p>
<p>Once you have completed two drawings you may one to develop a third drawing you can then add colouring using monochromatic colour schemes e.g Different shade of on colour to produce a delicate image.</p> <p>You can then try other colour ways such as using primary colours, or shading only.</p>
<p>Check you have all the equipment</p> <p>Set a time to complete activity.</p> <p>Involve family if applicable.</p> <p>Ask for support if required.</p> <p>Ask for the owner's permission when choosing items to draw.</p>

Please use another sheet of paper to write your answers if required

[rsmith@howcollege.ac.uk](mailto:rsmith@howcollege.ac.uk) or [jteece@howcollege.ac.uk](mailto:jteece@howcollege.ac.uk) or [sarblaster@howcollege.ac.uk](mailto:sarblaster@howcollege.ac.uk) - **Redditch**

[jlewak@howcollege.ac.uk](mailto:jlewak@howcollege.ac.uk) or [cdale@howcollege.c.uk](mailto:cdale@howcollege.c.uk) or [dmorris@howcollege.ac.uk](mailto:dmorris@howcollege.ac.uk)- **Worcester**

You may want to just set up an evidence folder to bring to college when we all meet again soon.

## Challenge 5

### Transition Project

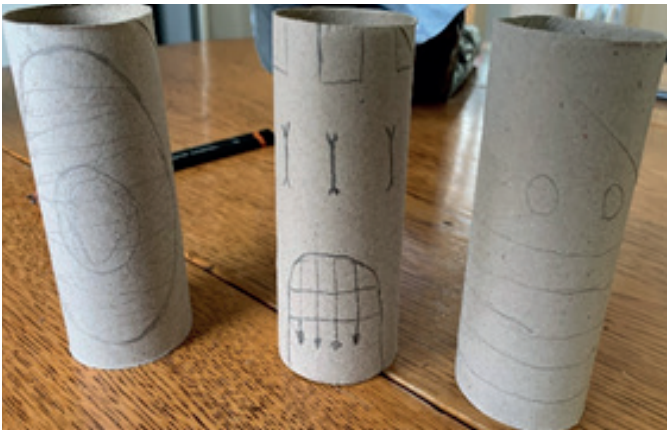
Art Project using toilet roll cardboard tube.

Hopefully you will all have toilet roll at home. I would like you to find an image that you like, it could be your pet e.g. a dog, cat, bunny rabbit or guinea pig. Maybe it could be a flower, bird or your favourite person. Look on the internet, in books, magazines or newspapers. Find an image you would like to draw.

Use a pencil to sketch the outline of the image onto your cardboard tube, make sure you curve the design around at least half of the cylinder.

Then use a biro or fine liner pen to add details to the image. Remember to use textures and lines to show shade, dark and lighter areas. If you have coloured pens or sharpies you could use these for extra definition to your picture.

Have a look at these ones that I made.



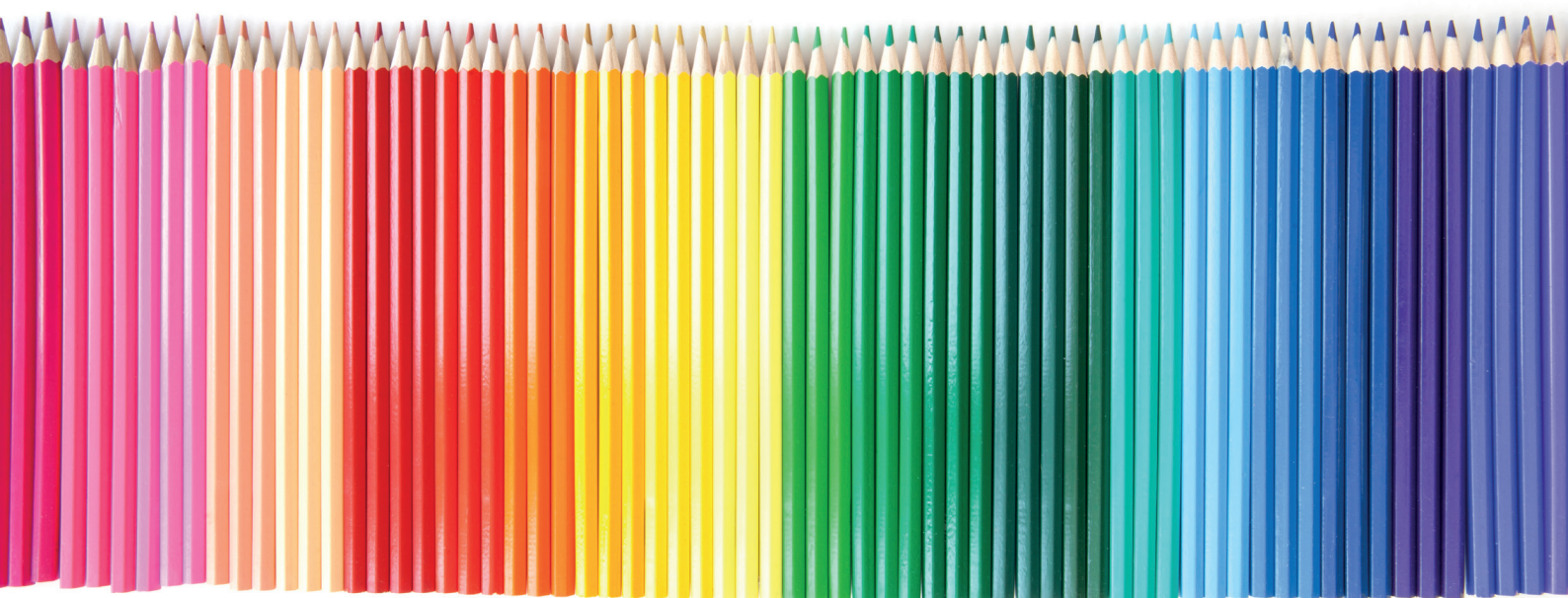
### Resources:

Pencil

Toilet roll innards

Pens

Colouring pencils / sharpies / pens





## Challenge 6

### Watch a Film

Objectives: To be able to take part in a family activity/or on your own.  
 Discuss what film you would like to watch, check with the family if applicable.  
 Discussion, speaking and listening, sharing ideas, making choices.

Instruction: Watch a film with the family

Discuss with family or make your own choice  
 What you would like to watch?

Discuss when and what time?

Final choice of film?

Describe the plot of the film and discuss with family (use descriptive language).

Feedback from family (if applicable)  
 Use descriptive language where possible to describe film.  
 Who was your favourite character and why?

Overall comment on:  
 Did you like the film?  
 What did you like about the film?  
 Did your family enjoy the film?  
 Would you recommend it to a friend?



## Challenge 7

### Cook a Meal

<p>Objectives: To be able to take part in family activity/ or on your own</p> <p>Discuss what meal you would like to cook, check with family if applicable and discuss cost.</p> <p>Work out budget from prior receipts or products online.</p> <p>Plan the task and how you are going to prepare meal and work out the timing</p>
Instruction Cook a meal with or for the family
<p>Complete a menu</p> <p>Discuss with family of make your own choice</p> <p>What you would like to cook?</p>
Discuss who likes what variety of food e.g. vegetarian, spicy or cost of meal
Final choice
<p>Check you have ingredients</p> <p>When will you cook the meal?</p> <p>How many for?</p> <p>Who will help or support if required?</p> <p>Any other issues</p> <p>Who will help with laying the table? Washing up and tidying the kitchen?</p>
Plan the sequence of how you are going to prepare the meal
<p>Feedback from family ( if applicable)</p> <p>Use descriptive language where possible to describe the food.</p>



## **Student Rules & Standards**

### **Students will be expected to:**

- Show positive student behaviour and respect for College buildings, facilities and other people's property
- Take responsibility for their own learning, ensuring that they are always ready to learn with the appropriate tools, equipment, behaviour and attitude and complete tasks/ assignments within set time frames to meet given targets
- Treat each other with the utmost respect and consideration
- Be committed to promoting fundamental British Values including democracy, the rule of law, individual liberty and mutual respect and tolerance of those with different faiths and beliefs
- Attend all classes and study sessions on time, including Tutorials, Work Experience, English and Maths and all provision that enhances employability and personal effectiveness
- Familiarise themselves with College safeguarding processes and procedures, including the Prevent agenda
- Report any concerns in a timely and appropriate manner and act in the best interest of others at all times, including in matters of bullying, including cyber bullying and discrimination
- Maintain these Standards when off campus on work placement and on educational visits
- Act as ambassadors for the College, recognising that their behaviour contributes to the reputation of the College within the community
- Show on demand their ID badge when on College premises and/or when undertaking College activities

### **General standards**

- Attendance 95% and punctuality 100% and inform the College of all absences
- Clothing must be appropriate for the curriculum area
- Comply with all health and safety guidelines and standards for the curriculum area
- Food and drink must not be consumed during lessons
- Refrain from copying work, using mobile phones or personal electronic devices unless instructed to do so
- Inform the College immediately of any change in your personal details
- Refrain from smoking, possession or distribution of illicit substances, consumption of alcohol, acts of violence or carrying any offensive weapon
- Comply with any requests by the Principal or delegated members of staff to search you or your belongings