

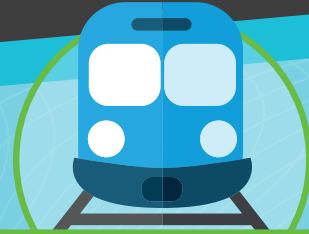
# A helping hand

A GUIDE TO FINANCIAL SUPPORT AVAILABLE TO LEARNERS AT HOW COLLEGE



## FURTHER EDUCATION LEARNER SUPPORT FUND

HELPS WITH	AGE AVAILABLE	LIMITS
<p>EQUIPMENT UNIFORM TRIPS TRAVEL MEALS CHILDCARE</p>	<p>16+</p>	<p>AGE INCOME</p>



## FREE TRAVEL

HELPS WITH	AGE AVAILABLE	LIMITS
<p>TRAVEL</p>	<p>16-19</p>	<p>AGE INCOME</p>



## ADVANCED LEARNER LOANS

HELPS WITH	AGE AVAILABLE	LIMITS
<p>FEES</p>	<p>19+</p>	<p>AGE COURSE</p>



## FREE COLLEGE MEALS

HELPS WITH	AGE AVAILABLE	LIMITS
<p>MEALS</p>	<p>16-19</p>	<p>AGE INCOME</p>

HOWCOLLEGE.AC.UK  
08448 802500



HEART OF  
WORCESTERSHIRE  
COLLEGE

## THE DETAILS

### FURTHER EDUCATION LEARNER SUPPORT FUND

The Further Education Learner Support Fund (FE-LSF) is a funding stream aimed at further education learners. You are eligible to apply if you are studying a further education course and are 23 and under or if you are over 23 and studying at a level 2 or below. The FE-LSF can support; equipment/uniform, trips, meals, travel, living costs, childcare.

Eligibility criteria applies. For more information please contact the student finance team.

### FREE TRAVEL

Here at Heart of Worcestershire College we appreciate that getting to college can be difficult and expensive; especially for full-time students who need to get to one of our campuses that is in another town to that in which they live. We therefore provide transport support to help ease your travel worries. If you are under 19, studying a full time course with the College and have a household income of between £25,000 and £45,000, you can receive free travel (providing you meet the eligibility criteria).

### FREE COLLEGE MEALS

Free college meals are provided to learners for the days they are in college and on placement. Meals can be collected from one of our many cafés who serve a range of nutritious and tasty meals. Learners must be between 16 - 18 or 19-25 and eligible to a Learning Difficulty Assessment or an Educational Health Care Plan. Additional financial criteria also apply.

### ADVANCED LEARNER LOANS

If you are over 19 and you would like to study a level 3, 4, 5 or 6 certificate or diploma, you will need to pay for the cost of your course. From September 2016, you will be able to apply for an FE Advanced Learning Loan to cover the cost of your tuition fees. Significantly you do not have to pay back the loan until your income exceeds £21,000 a year (which is £404 a week or £1,750 a month). This loan replaces the previous 24+ Advanced Loan. Eligibility criteria applies.

## WHO TO TALK TO

For more information about any of the support available to learners at college please contact our student finance team:

[studentfinance@howcollege.ac.uk](mailto:studentfinance@howcollege.ac.uk)

Redditch and Bromsgrove  
01527 572741

Worcester  
01905 725575 / 01905 743404