

YOUR
PASSPORT

TO FURTHER EDUCATION



HEART OF
WORCESTERSHIRE
COLLEGE

**FURTHER EDUCATION
PROSPECTUS**



GET INVOLVED...

WIMBLEDON

GO-KARTING

FOOTBALL

CLOTHES SHOW

POOL TABLE LEAGUE

GYM CLASSES

DODGE BALL

ARCHERY

BOXERCISE

CANOEING

BADMINTON

SAILING

BOXING

PGA PRO GOLF LESSONS

PAINTBALLING

NETBALL

RUGBY

TABLE TENNIS LEAGUE



FIND YOUR JOURNEY

INTRODUCTION

Student Life	4
Student Union	5
A Helping Hand	6
Employer Testimonial	9
Find your Level	10
Qualifications Explained	12
Your Application Made Easy	13
How to Find Us	155

AT THE HEART OF YOUR EDUCATION

Access to Higher Education	17-25
----------------------------	-------

AT THE HEART OF YOUR WORK

Apprenticeships	27
-----------------	----

AT THE HEART OF YOUR COMMUNITY

Health & Social Care and Early Years	31-35
--------------------------------------	-------

AT THE HEART OF YOUR CREATIVITY

Art & Design	39-42
Digital & Creative Media	43-46
Music & Performing Arts	47-51
Make Up for Film, Television and Stage	52

AT THE HEART OF YOUR INNOVATION

Business	57-58
Information Technology	59-61
Science	62-63

AT THE HEART OF YOUR LEARNING

Foundation Learning	67-73
---------------------	-------

AT THE HEART OF YOUR INDUSTRY

Hair, Barbering & Beauty	77-91
Hospitality & Catering	92-102
Travel & Tourism	104-105

AT THE HEART OF YOUR TALENT

Sports	109-114
Public Services	116-117

AT THE HEART OF YOUR SKILLS

Construction	121-138
Engineering, Electrical and Motor Vehicle	140-153

OPEN EVENTS

SAT 17TH OCT 11AM-2PM
ALL CAMPUSES

TUES 24TH NOV 5PM-8PM
WORCESTER CAMPUS

THURS 26TH NOV 5PM-8PM
BROMSGROVE CAMPUS
REDDITCH CAMPUS

TUES 2ND FEB 5PM-8PM
BROMSGROVE CAMPUS
REDDITCH CAMPUS

THURS 4TH FEB 5PM-8PM
WORCESTER CAMPUS

STUDENT

WE DON'T SEPARATE

LIFE

THE TWO

COLLEGE ISN'T JUST ABOUT GAINING YOUR QUALIFICATION. WE ALSO PROVIDE YOU WITH PLENTY OF OPPORTUNITIES TO TAKE PART IN NEW ACTIVITIES, JOIN DIFFERENT SOCIAL GROUPS AND HAVE THE TIME OF YOUR LIFE.

GET ACTIVE - SPORTS & VOLUNTEERING

We have a great range of sport, leisure and volunteering opportunities for all abilities.

- Our activities and clubs are usually free of charge
- We are affiliated to British College's Sport
- Students enter regional and national competitions against other colleges
- You can participate in any club or activity no matter your level, experience or ability
- Volunteering is a great way to boost your employability prospects

We also have some brilliant volunteer opportunities within your local community and local sports events. Volunteering is great for boosting your employability prospects or making your application to university more attractive.

BENEFITS & FREEBIES

0283054 C



FREE TRAVEL SUPPORT



STUDENT UNION MEMBERSHIP



CHILDCARE SUPPORT

0283054 C





student union



STUDENT PRESIDENT FOR WORCESTER AND MALVERN

JAMES' STORY

James Fuller came to the Heart of Worcestershire College to study Engineering, Level 2, as it was a subject that really excited and challenged him. He liked the look of the course as it gave him opportunities to put the problem solving skills he had learnt through extra curricular activities with the forces into practice. On completion of his course he would like to progress into the engineering industry to further challenge himself and to continue his personal development.

"I've had a good experience here at college and want to give my fellow students a chance to have the positive experience I have had. I want to give them the chance to try new things, making college a place not just where you go for an education but somewhere you go for personal development, socialise and get involved with extra-curricular activities".

EVERY STUDENT IS A MEMBER OF OUR STUDENT UNION. IT'S THERE TO GIVE YOU A CHANCE TO VOICE YOUR OPINIONS AND HAVE YOUR SAY. THE UNION HELPS TO RUN NATIONAL AND LOCAL CAMPAIGNS ON ISSUES THAT MAY AFFECT YOU DURING YOUR TIME OF STUDY. STUDENTS WILL HAVE THE CHANCE TO BECOME ACTIVELY INVOLVED IN THE UNION WITH OPPORTUNITIES TO FUNDRAISE AND HELP ORGANISE AND ATTEND EVENTS.

STUDENT PRESIDENT FOR REDDITCH AND BROMSGROVE

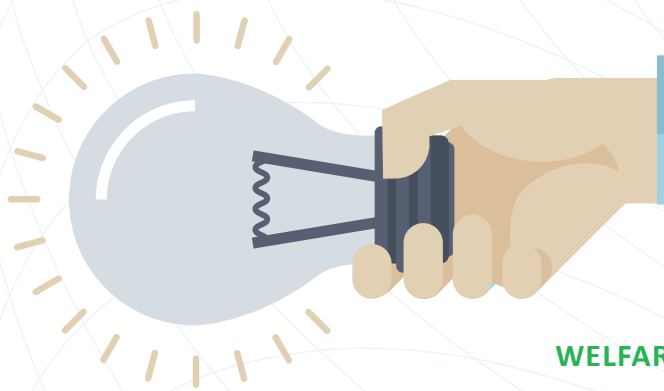
JOSH'S STORY

Last September Josh Howdle enrolled on an A-level course at a local college in the hope that it would help him achieve his dream career in the Royal Marines. Unfortunately Josh soon realised that his course choice was no longer suitable for his proposed career and he began to explore other options. Josh soon came across the Public Services course offered by the Heart of Worcestershire College and quickly applied. After catching up on the work he had missed, Josh is now a thriving student both academically and practically and has since been awarded the College's FE Student of the Year Award and has been elected as the Student President for the 2015/16 academic year.

Speaking about his first year at the College, Josh said:

"I chose to come to the College as I was struggling at sixth form when I realised the A-level pathway wasn't for me as I really want to pursue a career in the Royal Marines, thankfully the College accepted my application after the course had begun and it's really helped me to progress my views and knowledge on the public services.

I'm looking forward to my second year at HoW College and continuing with the physical aspects of the course as the Marines is a physically demanding career. So far the College has got me up to a higher standard and it's given me a better insight into the Marines. I'd recommend the course to anyone with a real interest in the public services."



A helping hand

STARTING AT A NEW COLLEGE CAN SOMETIMES BE DAUNTING. WE UNDERSTAND THAT MAKING NEW FRIENDS, FINDING YOUR WAY AROUND AND KNOWING WHO TO TALK TO, WHEN YOU NEED TO, IS SOMETIMES DIFFICULT. THEREFORE WE PROVIDE A RANGE OF SERVICES TO HELP YOU FEEL SAFE AND SUPPORTED.

WELFARE SERVICE

We take your welfare extremely seriously. Our Welfare Service provides you with a single point of contact if you are experiencing difficulties or worries. We offer confidential advice on a one-to-one basis and we are happy to discuss issues such as accommodation, bullying and general health.

PERSONAL TUTORS

Once you have enrolled onto your course we will assign you with a personal tutor who will support you in your academic studies. They will set targets and learning plans as well as providing pastoral support to ensure you reach your full potential at the College. You will participate in group tutorials and receive one-to-one support throughout the year that will help you develop skills and abilities to achieve your goals and have a successful future.

SUPPORT FOR SUCCESS

There may be times throughout college where you may require a little bit of extra help. This is where our Support 4 Success team can help make sure you gain the most out of your time at college. Whether you need techniques to manage your dyslexia, help organise your assignments, meet deadlines or support you to achieve the distinction grades you need, our specialist team will help you reach your full potential.

TRAVEL SCHEME

**BUY ONE TERM
GET TWO TERMS
FREE
ON TRAVEL PASSES**



YOU MUST:

Be under 19 years and in full-time education

Have a household income between £25k-£45k

Live at least 1.5 miles outside campus



A RANGE OF FINANCE AND TRAVEL FUNDS TO HELP YOU



16-18 YEAR OLDS

FURTHER EDUCATION LEARNER SUPPORT FUND

The Further Education Learner Support Fund (FE-LSF) is a funding stream to support further education learners. The FE-LSF can support equipment/uniform, trips, meals, travel, living costs, childcare.

FREE COLLEGE MEALS

Free college meals are available to students on a further education course between the ages of 16-18 years.

They can be used on the day that you are timetabled to attend your course. We have a great selection of main meals to choose from and we change our menu each day so you can benefit from a selection of food choices. Eligibility is based on family household income.

THE LEVEL OF SUPPORT IS BROKEN INTO TIERS DETAILED BELOW:

VULNERABLE TIER	£1,200 bursary for 'vulnerable' young people meeting Government stated criteria
DISCRETIONARY TIER	Household income of less than £25,000
TRAVEL SCHEME	Household income between £25,000 & £45,000

OVER 19 YEARS

Students aged 19 and over (as of 31 August in the year they start the course) will have to pay tuition fees, unless eligible for fee remission. For more information on fee remission visit howcollege.ac.uk

OVER 24 YEARS

24+ ADVANCED LEARNING LOANS

If you are over 24 at the start of your course and are studying a Level 3 or Level 4 qualification, you will be offered a loan to cover the cost of your course fees, travel to college, childcare and exam fees. Like higher education loans, you will not need to pay anything back until you earn £21,000. For more information visit www.gov.uk/advanced-learning-loans

CHILDCARE

Care to Learn can help you with childcare costs if you are under 20 and studying on a further education course.

WE UNDERSTAND THE IMPORTANCE OF A GOOD EDUCATION. STARTING AT A NEW COLLEGE CAN BE EXCITING AND CHALLENGING SO WE ENDEAVOUR TO PROVIDE THE SUPPORT NEEDED TO HELP OUR STUDENTS SECURE THEIR DREAM CAREER.



COMMUNICATION

We promise to keep in regular communication with you, to help support you achieve your greatest potential.



OPPORTUNITIES

We promise to provide opportunities for family, parents and guardians to visit the college through events and parent evenings.



SAFE & SECURE

We promise to provide a safe and secure environment.



EMPLOYER TESTIMONIALS

”

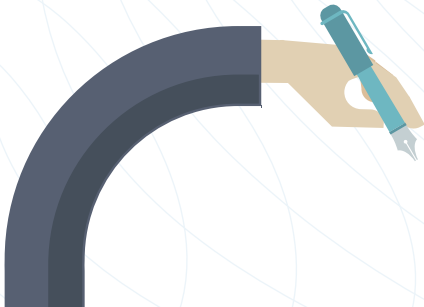
”

“I went from sitting in the lecture theatre at the College as a student, to being a guest lecturer talking about my experiences as a professional media composer. It's always good to come back!”

Paul Farrer - Film & TV music composer

“This is an excellent way for the students to get a taste of what it is like in the workplace. I have found with our work placement student that it has improved his confidence and widened his general 'life' experience.”

Rachel Mitchell - Hotel General Manager



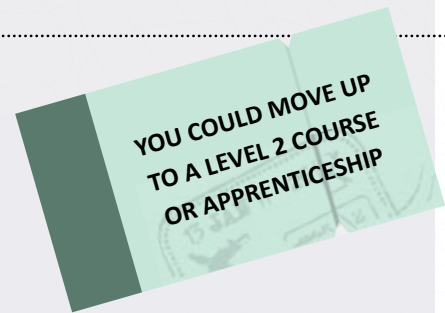
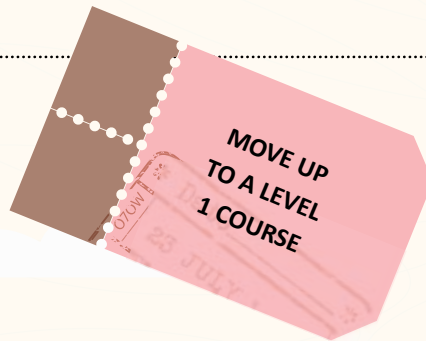
”



NO MATTER WHAT YOUR CURRENT LEVEL OF QUALIFICATION IS, WE HAVE A PATH SUITABLE FOR YOU. CONTINUE TO CLIMB WITH US AND REACH YOUR FULL POTENTIAL.

Some courses have subject specific entry requirements. Please see howcollege.ac.uk for more details.

WHERE WILL IT LEAD



EQUIVALENT

PRINCE'S TRUST
GATEWAY
HORIZONS

LEVEL 1 DIPLOMA

NO FORMAL QUALIFICATIONS

MAINLY GCSE GRADES 'E'

ENTRY LEVEL

LEVEL 1



FIND YOUR LEVEL

YOU COULD MOVE UP TO A LEVEL 3 COURSE OR START EMPLOYMENT

YOU COULD MOVE UP TO A HIGHER EDUCATION COURSE OR START EMPLOYMENT

ACCESS A WIDER RANGE OF CAREERS OR GO ON TO HIGHER EDUCATION

GCSEs
LEVEL 2 DIPLOMA
APPRENTICESHIPS

EXTENDED DIPLOMA
ADVANCED APPRENTICESHIPS
ACCESS TO HIGHER EDUCATION
A-LEVELS

HNC/D
FOUNDATION DEGREE

4 GCSEs GRADE A-D
including either maths,
English language or Level
1 Functional Skills

5 GCSEs GRADE A-C
including maths and English
language or satisfactory Level
2 initial diagnostic results

**BETWEEN
60 & 240
UCAS POINTS**

LEVEL
2

LEVEL
3

LEVEL
4/5





QUALIFICATIONS - EXPLAINED -

ONCE YOU THINK YOU KNOW WHICH LEVEL WOULD BE BEST FOR YOU, IT'S TIME TO CHOOSE THE RIGHT TYPE OF COURSE. CHOOSING THE RIGHT COURSE IS ESSENTIAL TO MAKING THE MOST OUT OF YOUR TIME AT COLLEGE AND CAN REALLY AFFECT HOW SUCCESSFUL YOU ARE AND HOW MUCH YOU ENJOY YOUR TIME WITH US.



It's never too early to think about your next step. We offer a wide range of university level courses without the costly tuition fees. Our courses are still validated by universities so you will still receive the same qualification as if you had gone to a university. In addition, we have the advantage of providing individual support due to our small class sizes.

ACCESS

Access programmes are designed to prepare learners for entry into higher education. The programmes provide the knowledge and skills needed to progress onto a Level 4 qualification at university or college. It provides learners, who may be lacking in confidence or have any formal qualifications to succeed in higher education.

VOCATIONAL

Vocational courses tend to be related to a particular occupation and will enable you to develop skills directly related to a potential future area of employment. These courses are more practical than A-Levels and will often see you studying in a working environment. Choosing the vocational route will give you qualifications recognised by employers. Level 3 vocational courses also give you the potential to progress onto higher education at college or university.

APPRENTICESHIPS

If earning whilst your learning sounds good to you, why not explore the apprenticeship pathway? For most apprentices your time will be split between college and the workplace; helping you to develop invaluable skills, whilst putting them into practice, gaining qualifications and earning as you go.

ENTRY LEVEL

If you don't have any formal qualifications then entry level courses could be for you. There are no entry requirements, just an interview and assessment to make sure you're on the right course.



YOUR APPLICATION *made easy*



1



LOOK

Take a look through our prospectus and website to find the right course for you.

2



ATTEND

Come to one of our open events, talk to lecturers and students to find out how we can help you achieve your full potential.

3



APPLY

Apply online via our website at howcollege.ac.uk or you can call us on 0844 880 2500

4



INTERVIEW

Once you receive your acknowledgement letter or email you will be invited in for an interview. You will be told at the end of the interview if you have been successful.

5



OFFER

If successful you will be invited to an enrolment session, normally held before the summer holidays. You must attend to confirm your place.

EASY AS 1, 2, 3 ... 4 AND 5

**AT THE
HEART
OF YOUR
EDUCATION**



**ACCESS TO HIGHER
EDUCATION**

WORCESTER CAMPUS

Deansway

Worcester,

WR1 2JF

01905 725555

REDDITCH CAMPUS

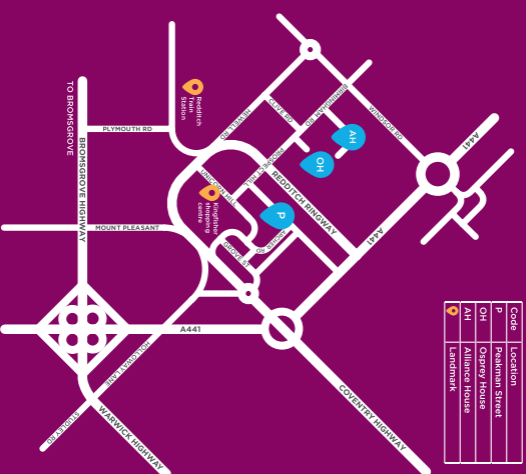
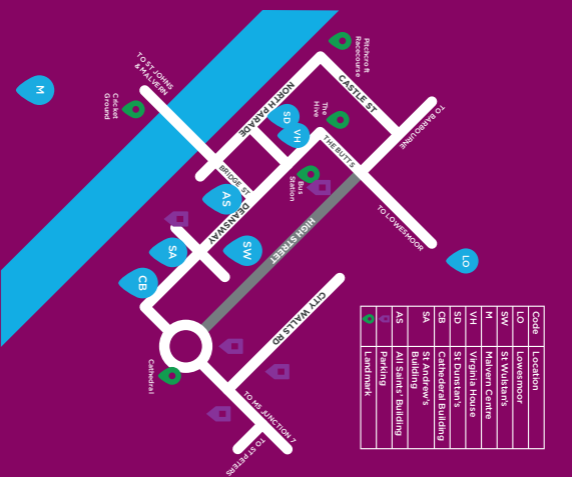
Peakman Street,

Redditch

B98 8DW

01527 572523

www.howcollege.ac.uk





SUBJECT AREA

ACCESS TO HIGHER EDUCATION

COURSE LENGTH

1 YEAR



SUBJECT AREA

ACCESS TO HIGHER EDUCATION

LOCATIONS

REDDITCH

WORCESTER

OPEN EVENTS

SAT 17TH OCT 11AM-2PM ALL CAMPUSES

TUES 24TH NOV 5PM-8PM WORCESTER CAMPUS

THURS 26TH NOV 5PM-8PM REDDITCH CAMPUS

TUES 2ND FEB 5PM-8PM REDDITCH CAMPUS

THURS 4TH FEB 5PM-8PM WORCESTER CAMPUS

POSSIBLE CAREER PROGRESSION

MIDWIFERY, NURSING, PARAMEDICS, RADIOTHERAPY, FORENSIC SCIENCE, LABORATORY TECHNICIAN, SOCIAL WORK, SOCIOLOGY, PSYCHOLOGY, HISTORY, LIBRARIAN, MARKETING, FINANCE, ACCOUNTANCY, LAW

COURSE LENGTH

1 YEAR

LOCATIONS

REDDITCH

WORCESTER

Foundation to Access to Higher Education

Worcester WHDP-CT2-1617PR

Do you dream of a new or better career, but feel held back by your lack of a higher education? Are you thinking of applying for university but have been out of work for a while and need to brush up on your skills? Whether you are 19 or 55 and whatever your level of ability, our Foundation to Access to Higher Education will provide you with the academic knowledge and study skills you need to progress to a full-time Access course and on to higher education. Our Foundation to Access to Higher Education students have achieved excellent success rates. Among those who successfully go on to complete an Access to HE course, over 90% achieve places at their first choice of university.



OPEN EVENTS

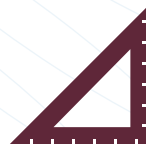
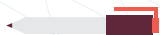
SAT 17TH OCT 11AM-2PM ALL CAMPUSES
TUES 24TH NOV 5PM-8PM WORCESTER CAMPUS
THURS 4TH FEB 5PM-8PM WORCESTER CAMPUS

PROGRESSION: Successful completion of this course could lead to a range of exciting Access to HE courses at Heart of Worcestershire College, including; Access to Health, Access to Social Sciences, Access to Science, Access to Social Science and Humanities and Access to Business, Law and Management. Progression from these courses can lead on to careers in radiography, social work, midwifery, nursing, forensic science, medical physics, medical labwork, and business.

COURSE LENGTH: 1 YEAR



APPLY HERE
WWW.HOWCOLLEGE.AC.UK
08448 802 500



Access to Higher Education: Health

Redditch RHLT-AH3-1617PR
Worcester WHLT-AH3-1617PR

Do you dream of becoming a nurse or midwife? Or are you thinking of working for the National Health Service in a related role such as an Occupational Therapist, Physiotherapist or Paramedic? Our Access to HE in Health will provide you with the skills and knowledge you need to succeed in higher education. Upon completion of the course, you will be fully qualified to apply for a nursing or midwifery course at a higher education establishment in the UK.

PROGRESSION: You can progress onto a broad range of academic and vocational higher education courses at a Foundation Degree, HND or BA (Hons) level.

COURSE LENGTH: 1 YEAR

OPEN EVENTS



SAT 17TH OCT 11AM-2PM ALL CAMPUSES
TUES 24TH NOV 5PM-8PM WORCESTER CAMPUS
THURS 26TH NOV 5PM-8PM REDDITCH CAMPUS
TUES 2ND FEB 5PM-8PM REDDITCH CAMPUS
THURS 4TH FEB 5PM-8PM WORCESTER CAMPUS



APPLY HERE
WWW.HOWCOLLEGE.AC.UK
08448 802 500



**GOOD CAREER
PATHWAYS IN
MEDICAL SCIENCE,
FORENSICS,
CRIMINOLOGY AND
GENERAL SCIENCE**

★ EDUCATION ★

**COMING
SOON**

**Access to
Higher Education:
Teaching**

More information on
WWW.HOWCOLLEGE.AC.UK



Access to Higher Education: Science

Redditch RSCI-AH3-1617PR
Worcester WSCI-AH3-1617PR

Have you ever wondered how the world around us works? Does biology determine the way we behave? Is climate change a threat to the environment? If you find yourself asking these questions, then you are already thinking like a scientist. With our Access to HE Diploma in Science, you will be on your way to a degree course in science or a health profession such as nutrition, physiotherapy, radiography or microbiology. The course will take you on a fascinating journey into the worlds of forensic science, chemistry, biology or environmental science.

PROGRESSION: You can progress onto a broad range of academic and vocational higher education courses at a Foundation Degree, HND or BA (Hons) level.

COURSE LENGTH: 1 YEAR

OPEN EVENTS



SAT 17TH OCT 11AM-2PM ALL CAMPUSES
TUES 24TH NOV 5PM-8PM WORCESTER CAMPUS
THURS 26TH NOV 5PM-8PM REDDITCH CAMPUS
TUES 2ND FEB 5PM-8PM REDDITCH CAMPUS
THURS 4TH FEB 5PM-8PM WORCESTER CAMPUS



APPLY HERE
WWW.HOWCOLLEGE.AC.UK
08448 802 500



Access to Higher Education: Social Science

Redditch RSSC-AH3-1617PR
Worcester WSSC-AH3-1617PR

Why do we behave the way we do? What makes us happy, jealous, angry or sad? Are we free or controlled by society, government and the media? When you choose to study an Access to HE Diploma in Social Science you will be encouraged to ask thought-provoking questions about human behaviour and the way we choose to live our lives. It is a fascinating subject, but especially suitable if you are thinking of a career that involves working with people, as social work, community outreach, policing or working with charities.

PROGRESSION: You can progress onto a broad range of academic and vocational higher education courses at a Foundation Degree, HND or BA (Hons) level.

COURSE LENGTH: 1 YEAR



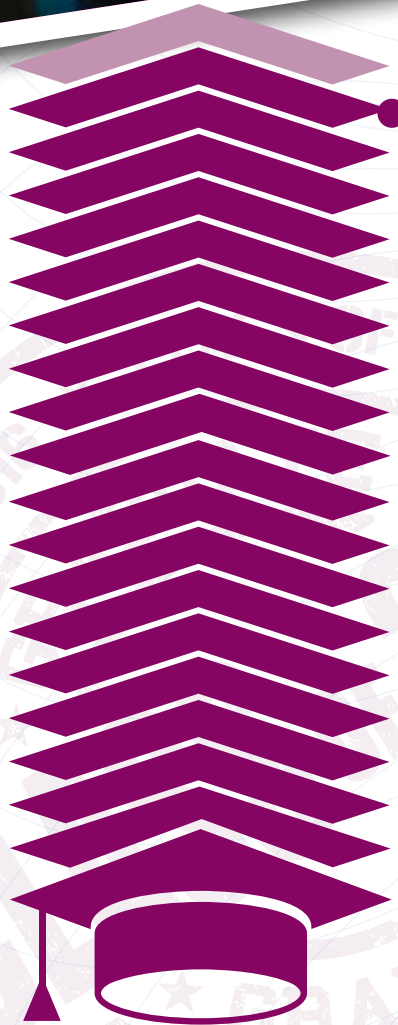
OPEN EVENTS

SAT 17TH OCT 11AM-2PM ALL CAMPUSES
TUES 24TH NOV 5PM-8PM WORCESTER CAMPUS
THURS 26TH NOV 5PM-8PM REDDITCH CAMPUS
TUES 2ND FEB 5PM-8PM REDDITCH CAMPUS
THURS 4TH FEB 5PM-8PM WORCESTER CAMPUS



APPLY HERE
WWW.HOWCOLLEGE.AC.UK
08448 802 500





..... **95%**
GO ON TO
UNDERGRADUATE
COURSES
AT
UNIVERSITY
OR



Access to Higher Education: Social Science & Humanities

Redditch RSSH-AH3-1617PR
Worcester WSSH-AH3-1617PR

Are you looking to broaden your skills and knowledge and progress to higher education? Would you like to study history or sociality at university? Would you like to become a Psychologist? This Diploma can help you achieve your place at university. Alongside studying subject areas such as history, sociology and psychology, students are assisted with their applications to gain a place at university. To date, we have been extremely successful in supporting such students to gain places both at local universities such as Birmingham City University, Wolverhampton University, Newman University and the University of Worcester as well as further afield.

PROGRESSION: You can progress onto a broad range of academic and vocational higher education courses at a Foundation Degree, HND or BA (Hons) level.

COURSE LENGTH: 1 YEAR



APPLY HERE
WWW.HOWCOLLEGE.AC.UK
08448 802 500



OPEN EVENTS

SAT 17TH OCT 11AM-2PM ALL CAMPUSES
TUES 24TH NOV 5PM-8PM WORCESTER CAMPUS
THURS 26TH NOV 5PM-8PM REDDITCH CAMPUS
TUES 2ND FEB 5PM-8PM REDDITCH CAMPUS
THURS 4TH FEB 5PM-8PM WORCESTER CAMPUS

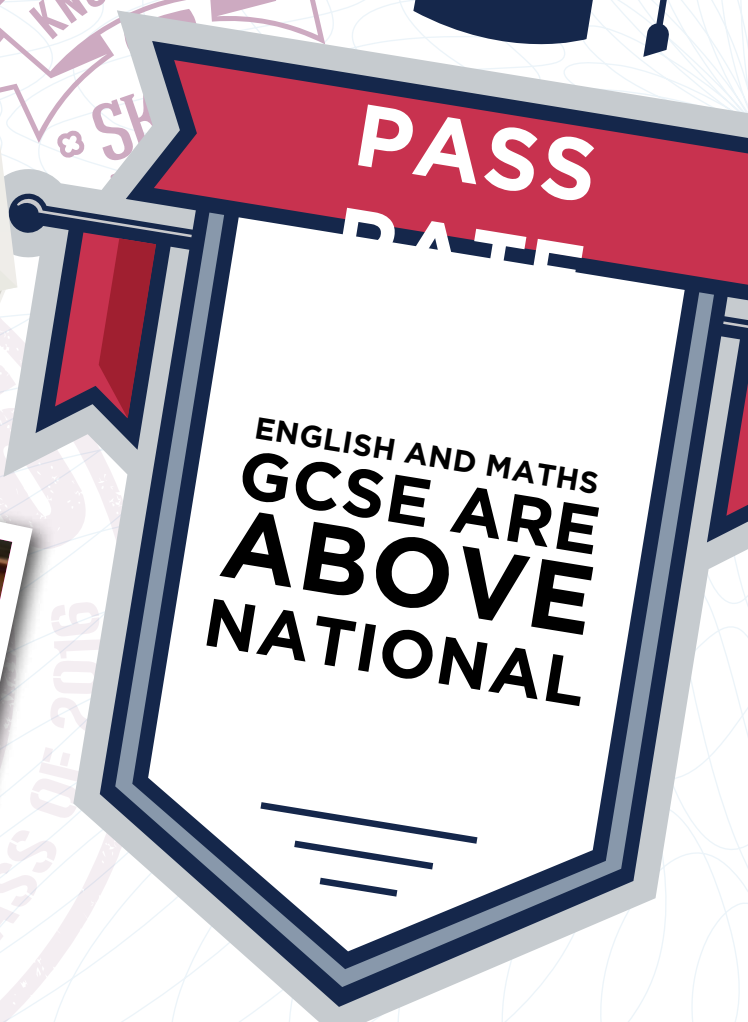
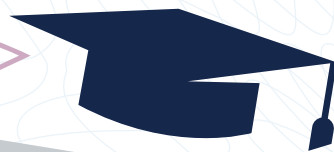


DID YOU KNOW?

nursing, midwifery, paramedical sciences, radiography and social work are the most popular careers after Access to Higher Education is completed.

"Several of us who completed the Access course with you have successfully gained places at the University of Worcester and have discussed how good the Access course has turned out to be for us. It has helped us so much more than other students we are meeting."

Jonathan Hellyer
Access student



Access to Higher Education: Business, Law and Management

Worcester WBMG-AH3-1617PR

Would you like to run your own business? Do you want to study business or law at university level? If the answer is yes, then our Access to HE Diploma in Business, Law and Management could be the perfect route for you. You will learn about Law, Economics, Business Management and Business Organisation. Our Access course will give you the essential knowledge needed to succeed in higher education and progress your future career including essay writing skills and IT skills.

PROGRESSION: You can progress onto a broad range of academic and vocational higher education courses at a Foundation Degree, HND or BA (Hons) level.

COURSE LENGTH: 1 YEAR



OPEN EVENTS

SAT 17TH OCT 11AM-2PM **ALL CAMPUSES**
TUES 24TH NOV 5PM-8PM **WORCESTER CAMPUS**
THURS 26TH NOV 5PM-8PM **REDDITCH CAMPUS**
TUES 2ND FEB 5PM-8PM **REDDITCH CAMPUS**
THURS 4TH FEB 5PM-8PM **WORCESTER CAMPUS**



APPLY HERE
WWW.HOWCOLLEGE.AC.UK
08448 802 500



**AT THE
HEART
OF YOUR
WORK**



HEART OF WORCESTERSHIRE COLLEGE

SOLUTIONS

APPRENTICESHIPS

Apprenticeships

HEART OF WORCESTERSHIRE COLLEGE
SOLUTIONS

'Apprentices develop their employability skills as they apply their learning in workplace activities.'

Do you want to earn as you learn? Do you thrive in the workplace and are keen to get hands-on experience? Whether you've just completed your GCSEs, are in employment or have finished college, you can choose to apply for an apprenticeship with us to give you the opportunity to gain real industry experience and training in your chosen area. Ultimately, you will be an employee of a company with a contract of employment, getting a weekly wage and qualifications alongside it. You can choose from various apprenticeship fields, such as; Accountancy, Brickwork, Beauty, Business, Customer Service, Electrical Engineering and so much more.

PROGRESSION: Completing an apprenticeship can open many career doors for you. With qualifications, which demonstrate you know the theory behind the job role, you could be offered a permanent position or the opportunity to progress further through an advanced higher apprenticeship or professional qualification.



OPEN EVENTS

SAT 17TH OCT 11AM-2PM ALL CAMPUSES
TUES 24TH NOV 5PM-8PM WORCESTER CAMPUS
THURS 4TH FEB 5PM-8PM WORCESTER CAMPUS



APPLY HERE
WWW.HOWCOLLEGE.AC.UK
08448 802 500



**AT THE
HEART
OF YOUR
COMMUNITY**



**CARE AND
COMMUNITY**

WORCESTER CAMPUS

Deansway

Worcester,

WR1 2JF

01905 725555

REDDITCH CAMPUS

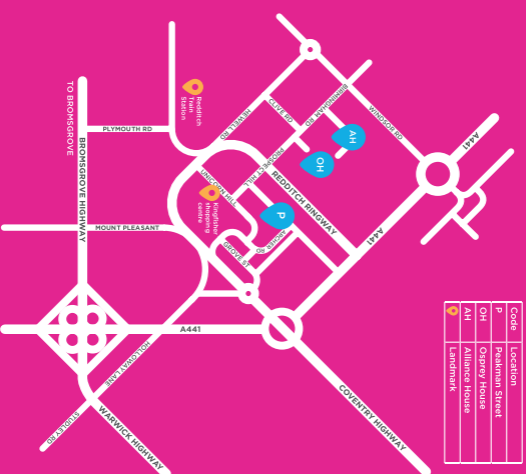
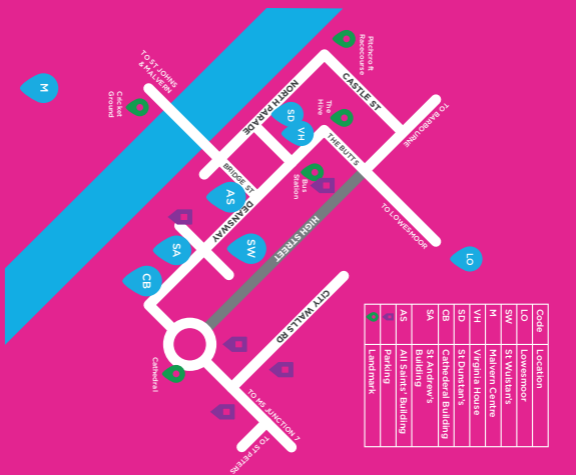
Peakman Street,

Redditch

B98 8DW

01527 572523

www.howcollege.ac.uk





SUBJECT AREA
CARE AND COMMUNITY

COURSE LENGTH
1 YEAR TO 2 YEARS



SUBJECT AREA
CARE AND COMMUNITY



LOCATIONS

REDDITCH

WORCESTER

OPEN EVENTS

SAT 17TH OCT 11AM-2PM ALL CAMPUSES

TUES 24TH NOV 5PM-8PM WORCESTER CAMPUS

THURS 26TH NOV 5PM-8PM REDDITCH CAMPUS

TUES 2ND FEB 5PM-8PM REDDITCH CAMPUS

THURS 4TH FEB 5PM-8PM WORCESTER CAMPUS

FUTURE POTENTIAL SALARY

RANGING FROM £6.99PH TO £16.59PH

JOBS IN WEST MIDLANDS

UPTO 12,579 COURSE DEPENDENT

COURSE LENGTH

1 YEAR TO 2 YEARS

LOCATIONS

REDDITCH

WORCESTER

JOBS IN WEST MIDLANDS

UPTO 12,579 COURSE DEPENDENT

Pathway in Caring for Children and Adults Level 2

Redditch REYF-CT2-1617PR
Worcester WCCA-AW2-1617PR

Would you like to make a difference to society? Dream of working with children? Or would you like to care for the elderly? If so, then our Pathway in Caring for Children and Adults, Level 2, is an ideal route into the care industry. Our combined pathway will provide you with key transferable skills allowing you to progress and specialise in either childcare or health and social care.

You will have the opportunity to study aspects of childcare and health and social care over the year. You will learn effective communication skills, including how to overcome barriers to communication and you will explore health and well-being, investigating the role of parents, siblings, and carers. You will cover all ages from infancy to adulthood and the elderly. A key part of this course is work experience placements where you can learn practical skills and gain an understanding of the industry.

PROGRESSION: On successful completion of this course, you could apply to the Level 3 course in Childcare or the Level 3 course in Health and Social Care. This is subject to meeting the entry requirements.

COURSE LENGTH: 1 YEAR



OPEN EVENTS

SAT 17TH OCT 11AM-2PM ALL CAMPUSES
TUES 24TH NOV 5PM-8PM WORCESTER CAMPUS
THURS 26TH NOV 5PM-8PM REDDITCH CAMPUS
TUES 2ND FEB 5PM-8PM REDDITCH CAMPUS
THURS 4TH FEB 5PM-8PM WORCESTER CAMPUS



APPLY HERE

WWW.HOWCOLLEGE.AC.UK
08448 802 500



BUSTING *College* MYTHS #1

YOU NOW HAVE TO STAY IN EDUCATION OR TRAINING UNTIL YOU'RE 18

Staying in education or training can include vocational and technical courses at college or apprenticeships in the workplace. So if traditional education is not for you there are plenty of other courses, training opportunities and apprenticeships at HoW College. Our courses are designed to provide excellent employability and technical skills to allow learners to progress onto higher education and/or employment.

★ EDUCATION ★

**Well established
and high quality
partnerships with
early years and
the care industry
and work related
employment.**



Award/Diploma in Children's Play, Learning and Development CPLD

Redditch REYF-DP3-1618PR
Worcester WCLD-ND3-1618PR

Are you positive, caring and enthusiastic? Are you considering a career working with young children? Would you like a job where you can make a real difference to people's lives? If you choose to work in early years or childcare, you will be playing a crucial role in shaping the lives of our future generations. This is a career to be proud of and our Award/Diploma in Children's Play, Learning and Development will help you turn your dream job into reality. Our course offers you the practical skills and knowledge that you need to work towards gaining the necessary requirements for working within the sector.

You will study the Award in Children's Play, Learning and Development in the first year, and if you successfully complete the Award, you will progress into the second year, where you will complete the Diploma.

You will study all aspects of childcare, learning and development, including how to promote wellbeing and resilience, and safeguard the children in your care. You will develop a range of learning and play activities, and learn how to promote equality and diversity. You will also develop your communication skills so that you can interact successfully with children, parents and colleagues. Some of your units will be practical, where you will plan and implement activities such as cookery, numeracy, sensory, and story telling. Others will be more theoretical and may involve studying children's behaviour or discussing the impact of social policy on childcare and development. You will attend four or five different placements during the course and complete a minimum of 800 hours of work experience. You will be attending placement for 2 days per week, working with the age ranges 0-2, 2-5, 5-8 in different childcare settings including nurseries, reception classes, pre-schools, special educational needs, and childminders.

PROGRESSION: Successful completion of the Diploma will enable you to work with children in a variety of roles, such as a Children's Centre Worker, Nursery Nurse, Nanny, Teaching Assistant, or Learning Assistant.

It will also equip you for further study and you may like to consider our HND Advanced Practice in Working with Children and Families or a degree in Teaching, Nursing or Social Work.

COURSE LENGTH: 1-2 YEARS



OPEN EVENTS

SAT 17TH OCT 11AM-2PM ALL CAMPUSES
TUES 24TH NOV 5PM-8PM WORCESTER CAMPUS
THURS 26TH NOV 5PM-8PM REDDITCH CAMPUS
TUES 2ND FEB 5PM-8PM REDDITCH CAMPUS
THURS 4TH FEB 5PM-8PM WORCESTER CAMPUS



APPLY HERE
WWW.HOWCOLLEGE.AC.UK
08448 802 500



BUSTING *College* MYTHS #2

STAYING IN EDUCATION DOES NOT MEAN YOU HAVE TO STAY AT SCHOOL

Our idea of a classroom is an engineering workshop, hair and beauty salon or a place of real work. Our lecturers are from industry and we provide learners with work experience placements as part of their course. Vocational skills are now in demand and are recognised by employers and universities. You can change your career pathway after taking a vocational qualification. Some learners worry that a vocational route is too narrow and you need to know what job you want. Our vocational courses develop employability skills allowing learners the flexibility to change careers.

Our success rates are
above the national
average for Health
& Social Care and
Early Years.



Subsidiary/Extended Diploma in Health & Social Care Level 3

Redditch RHSC-ED3-1618PR
Worcester WHSC-ED3-1618PR

Are you interested in a career in caring? Could you see yourself working with both adults and children? Would you like to become a midwife? This course could provide you with the knowledge and expertise to do so. In your first year you will study the Subsidiary Diploma, and on successful completion of this, you will progress to your second year, where you will complete your Extended Diploma. Throughout the course, you will study a range of topics that will include; Effective Communication, Anatomy, Physiology, Lifespan Development, Health, Safety and Security, Equality, Diversity and Human Rights. Our course will take your learning to an advanced level and help you gain a new perspective on a range of health and social care issues. If you are keen to develop a career in this area and are thinking of going to university, then this is the course for you. Our course will help you explore a range of exciting health and social care issues through classroom study, group discussion and project work. You will also attend a work placement for at least one day a week.

PROGRESSION: You can continue onto a Higher National Diploma or a variety of degree courses at university. You can also progress into employment in a variety of roles including, nursing (adult, children and mental health), midwifery, social work, occupational therapy and more.

COURSE LENGTH: 1-2 YEARS

WE OFFER HIGH QUALITY PROVISION THAT MEETS LEGAL AND QUALITY GUIDELINES SET BY THE GOVERNMENT.



OPEN EVENTS

SAT 17TH OCT 11AM-2PM ALL CAMPUSES
TUES 24TH NOV 5PM-8PM WORCESTER CAMPUS
THURS 26TH NOV 5PM-8PM REDDITCH CAMPUS
TUES 2ND FEB 5PM-8PM REDDITCH CAMPUS
THURS 4TH FEB 5PM-8PM WORCESTER CAMPUS



APPLY HERE
WWW.HOWCOLLEGE.AC.UK
08448 802 500

**AT THE
HEART
OF YOUR
CREATIVITY**



CREATIVE ARTS

BROMSGROVE CAMPUS

Slideshow Drive,

Bromsgrove,

B60 1PQ

01527 570020

WORCESTER CAMPUS

Deansway,

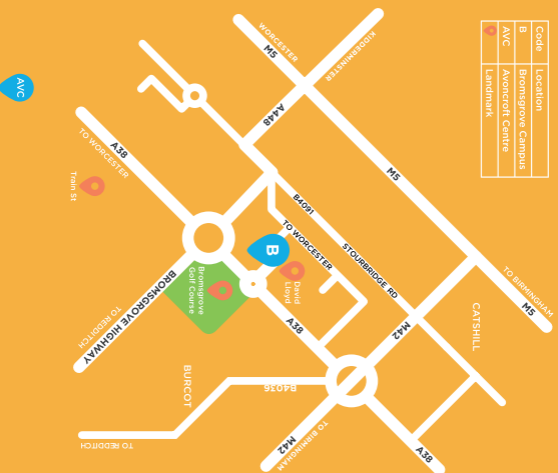
Worcester,

WR1 2JF

01905 725555

www.howcollege.ac.uk

Code	Location
B	Bromsgrove Campus
AVC	Avoncroft Centre
	Landmark



Code	Location
LO	Lowesmoor
SW	St Wulstan's
M	Malvern Centre
VH	Virginia House
SD	St Dunstan's
CB	Cathedral Building
SA	St Andrew's Building
AS	All Saints' Building
	Parking
	Landmark

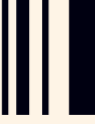




SUBJECT AREA
CREATIVE ARTS



COURSE LENGTH
1 YEAR OR 2 YEARS



SUBJECT AREA
CREATIVE ARTS



LOCATIONS

BROMSGROVE

WORCESTER

OPEN EVENTS

SAT 17TH OCT 11AM-2PM ALL CAMPUSES

TUES 24TH NOV 5PM-8PM WORCESTER CAMPUS

THURS 26TH NOV 5PM-8PM BROMSGROVE CAMPUS

TUES 2ND FEB 5PM-8PM BROMSGROVE CAMPUS

THURS 4TH FEB 5PM-8PM WORCESTER CAMPUS



FUTURE POTENTIAL SALARY

RANGING FROM £12.39PH TO £19.45PH

JOBS IN WEST MIDLANDS

UPTO 3,708 COURSE DEPENDENT

COURSE LENGTH

1 YEAR OR 2 YEARS

LOCATIONS

BROMSGROVE

WORCESTER

JOBS IN WEST MIDLANDS

UPTO 3,708 COURSE DEPENDENT

Diploma in Art & Design Level 2

Bromsgrove BART-DP2-1617PR
Worcester WCRA-DP2-1617PR
WART-DP2CR-1617CS

Are you a budding artist who has a keen interest in art and design? Could you see yourself as the next Picasso? Would you like to further develop your existing skills and explore and experiment with a range of art and design disciplines? Then our Diploma in Art and Design, Level 2, is the perfect opportunity for you to put your passion for art and design into practice. You'll spend your time with us studying a range of disciplines including; Drawing, Painting, Graphics, 3D Design, Fashion, Textiles as well as looking at the work of other artists, designers and cultures. Most of the work is carried out in our specialist design studios and computer suites.

OPEN EVENTS



SAT 17TH OCT 11AM-2PM ALL CAMPUSES
TUES 24TH NOV 5PM-8PM WORCESTER CAMPUS
THURS 26TH NOV 5PM-8PM BROMSGROVE CAMPUS
TUES 2ND FEB 5PM-8PM BROMSGROVE CAMPUS
THURS 4TH FEB 5PM-8PM WORCESTER CAMPUS



APPLY HERE
WWW.HOWCOLLEGE.AC.UK
08448 802 500

PROGRESSION: This course will open up opportunities to continue studying art and design subjects and to progress to a higher Level 3 course. You may wish to progress to any of our Extended Diploma Level 3 options.

If you don't want to continue studying, then you may want to progress into creative arts based careers such as studio assistant and retail work in the areas of print and reprographics, arts and crafts, photography, textiles and garment making or continue with your own artwork.

COURSE LENGTH: 1 YEAR

75%
OF LEARNERS
GO ONTO
LEVEL 3
ART AND
DESIGN



Extended/Diploma in Art & Design Level 3

Bromsgrove BART-ED3-1618PR
Worcester WART-ED3-1618PR

Do you dream about a career within the world of art and design? Would you like to be the next Banksy, create the next Apple product or influence the world of fashion? If so this could be the course for you. In today's competitive work environment, artists and designers are required to be multi-skilled, adaptable and self-motivated.

Using specialist workshops with a curriculum designed around you, we aim to provide the opportunity to develop specialist skills relating to a range of creative disciplines. This may include Fine Art (Sculpture, Painting, Printmaking, Photography), 3D design (Interior Design and Product Design), and Graphics (Information Design).



OPEN EVENTS

SAT 17TH OCT 11AM-2PM ALL CAMPUSES
TUES 24TH NOV 5PM-8PM WORCESTER CAMPUS
THURS 26TH NOV 5PM-8PM BROMSGROVE CAMPUS
TUES 2ND FEB 5PM-8PM BROMSGROVE CAMPUS
THURS 4TH FEB 5PM-8PM WORCESTER CAMPUS



APPLY HERE

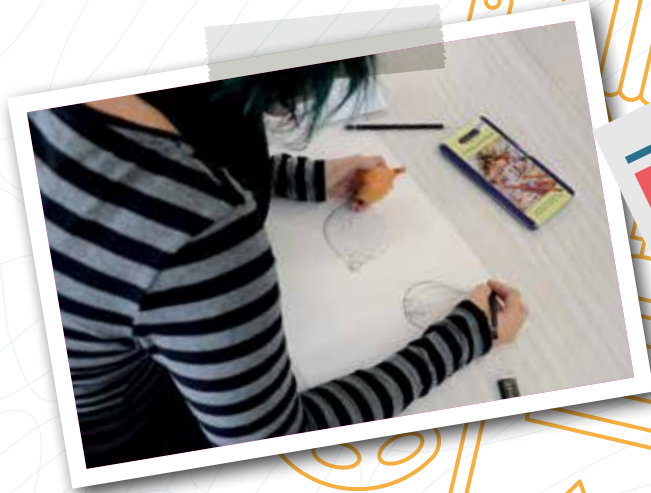
WWW.HOWCOLLEGE.AC.UK
08448 802 500

PROGRESSION: Students who successfully complete this course can progress onto the Foundation Degree in Art & Design. Alternatively you may want to progress into creative arts based careers such as studio assistants and retail work in the areas of print and reprographics, arts, crafts, photography, textiles and garment making etc.

COURSE LENGTH: 2 YEARS

Success rates, retention rates and achievement rates in Art and Design, Music and Performing Arts are above the National Average!





FE AWARDS

The College shone a light on their outstanding students at the end of the academic year as they hosted their annual further education awards. The awards saw over 140 students awarded various titles including 'Outstanding Achievement', 'Most Improved' and 'Will to Succeed' in their respective areas. The night also saw the announcement of the overall 'FE Student of the Year'.

Aymi's advice to anyone looking to follow in her footsteps is

"just keep going, work hard and the rest will follow!"

Aymi Duignam
Art and Design Student

Aymi started her own business AymysDesigns, selling her paintings, clothing and accessories. Her painting of Nicki Minaj was presented to the singer at her concert by Trey Songz.

Foundation Diploma in Art & Design

Bromsgrove BART-FD3-1617PR

Do you have a passion for design? Could you be the next Andy Warhol or Tracey Emin? Do you already have an understanding of the world of art and design? Then this course is designed for applicants just like you. The Foundation Diploma in Art and Design is an exciting and challenging course that encourages you to experience a range of art and design subjects in order to discover your preferred career direction. A key element of the course is building a specialist portfolio that is suitable for entry to university, higher education or employment.

PROGRESSION: After the course you can pursue a range of creative careers including; graphic design, illustration, photography, fine art (painting, sculpture, printmaking, video and installation) fashion design (including fashion communication and promotion), product design and art therapy.

COURSE LENGTH: 1 YEAR



OPEN EVENTS

SAT 17TH OCT 11AM-2PM ALL CAMPUSES
THURS 26TH NOV 5PM-8PM BROMSGROVE CAMPUS
TUES 2ND FEB 5PM-8PM BROMSGROVE CAMPUS



APPLY HERE

WWW.HOWCOLLEGE.AC.UK
08448 802 500



Diploma in Digital Media Level 2

Bromsgrove BIMD-DP2-1617PR

Are you passionate about the world of gaming? Would you like to create the next Halo or Portal? Could you see yourself working for Sony, Nintendo or Xbox? This course will provide you with the chance to study interactive media production, specialising in video design, at an intermediate level. Throughout this course you will gain skills in animation and graphic design while also working on 2D computer game engines. You will also gain invaluable knowledge of the games and software industry, including communication techniques and research skills.

PROGRESSION: You can continue onto our Extended Diploma in Creative Media Production, Level 3, alternatively you can also seek employment in the games and software industry. The skills and knowledge that you gain throughout this course are also transferable to a wide range of jobs.

COURSE LENGTH: 1 YEAR



OPEN EVENTS

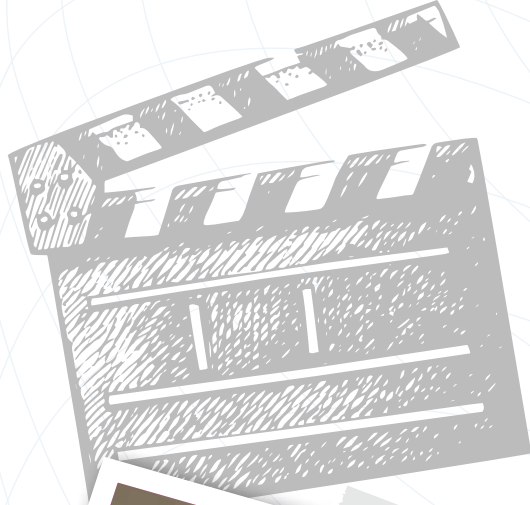
SAT 17TH OCT 11AM-2PM ALL CAMPUSES
THURS 26TH NOV 5PM-8PM BROMSGROVE CAMPUS
TUES 2ND FEB 5PM-8PM BROMSGROVE CAMPUS



APPLY HERE

WWW.HOWCOLLEGE.AC.UK
08448 802 500





STAR STUDDED GUEST SPEAKER PROGRAMME

We have a star studded guest speaker programme; including Tony Chance, who created Hollywood stories boards for Bridget Jones and Mission Impossible and Oscar winning sound editor, Norman Wanstall. We also work closely with local businesses such as Bosch Thermotechnology Ltd to produce videos and multimedia solutions.



Extended Diploma in Creative Media Production for Film, Television & Animation Level 3

Bromsgrove BCMP-ED3-1618PR

Can you see yourself making the next Game of Thrones or Breaking Bad? Are you obsessed with films and TV? Have you ever considered a career behind the camera? Then our Extended Diploma in Creative Media Production for Film, Television and Animation is the course for you. Throughout your time on the course you'll learn the necessary practical and career-related skills for the creative media industries, particularly film, digital video and television. These industries offer a wide range of career opportunities including; technical and creative roles (such as directing, camera, television production, sound and scriptwriting) and administrative roles (production management and research). In addition to these roles, the media industries offer a much broader scope for future career progression, into such areas as photography, journalism, digital media, web design and advertising. The course will also give you valuable academic skills to help you succeed in higher education, whether at HoW College or at university.

PROGRESSION: After successfully completing the course, the qualification has the same value as 3 A-levels. This will allow you to progress either to the College's HND Creative Media Production course (two years), or a 3-year course at a university of your choice. Many of our students have progressed to university courses in a wide range of fields including TV, film or radio production, film studies, journalism, and events management. A large number have gone on to find excellent positions in TV production, editing and film production (both contract and freelance), film production management, digital media, scriptwriting and events management.

COURSE LENGTH: 2 YEARS



OPEN EVENTS

SAT 17TH OCT 11AM-2PM ALL CAMPUSES
THURS 26TH NOV 5PM-8PM BROMSGROVE CAMPUS
TUES 2ND FEB 5PM-8PM BROMSGROVE CAMPUS



APPLY HERE
WWW.HOWCOLLEGE.AC.UK
08448 802 500



Extended Diploma in Digital Media for Gaming, App & Web Design Level 3

Bromsgrove BGAM-ED3-1618PR

Are you a gaming enthusiast who can't get enough of the latest releases? Could you see yourself creating the next Call of Duty, Battlefield or Assassins Creed? Have you ever wondered what it takes to make the top gaming releases? Then this course could be the perfect opportunity for you to embark upon a career in games development. The aim of the course is to provide you with a solid foundation in games and new media software and technology. You will be taught through workshop-based sessions in the specialist Game Design Studio that encourages hands on experience of industry standard software and techniques including Adobe Creative Suite Master Collection, 3DS MAX, Unreal Engine 4 and Gamedesigner. You will use the latest software and hardware to produce 2D Games, 3D Game Levels, Game Design Documents, Game Story Development, Concept Art, Flash Animation, Game Packaging, Digital Imaging, Digital Video/Sound, 3D Modelling, Animation and Environments. You will also learn about the Games Industry, Game Platforms, Pre-Production Techniques, Research Techniques and Communication Skills, as well developing your storyboard skills and learning to visually communicate your ideas.

PROGRESSION: Upon successful completion of this course you can seek employment in any part of the games and interactive media industries. You can also choose to progress onto the Foundation Degree in Games and Interactive Media here at HoW College. Alternatively you could also progress to a university degree in an appropriate vocational discipline at any university in England.

COURSE LENGTH: 2 YEARS



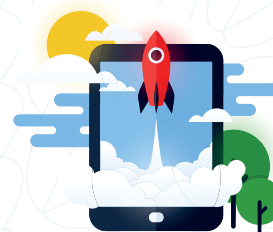
OPEN EVENTS

SAT 17TH OCT 11AM-2PM ALL CAMPUSES
THURS 26TH NOV 5PM-8PM BROMSGROVE CAMPUS
TUES 2ND FEB 5PM-8PM BROMSGROVE CAMPUS



APPLY HERE

WWW.HOWCOLLEGE.AC.UK
08448 802 500



20%

OF LEARNERS PROGRESS ONTO THE

**FOUNDATION DEGREE
IN INTERACTIVE MEDIA**

Diploma in Creative Arts - Music and Performance Pathway Level 2

Worcester WCRA-DP2-1617PR
WMPA-DP2CR-1617CS

Are you creative, hardworking and a natural performer? Do you dream of a career on the stage? Do you thrive under the spotlight? Look no further, because our Creative Arts - Music and Performance Pathway, Level 2, will put you in the spotlight. The course offers two pathways where you can focus on your singing, dancing and acting, or focus on developing your musical skills on your chosen instrument.

As a performing artist you will work on your own and as part of a group to learn, create and perform a range of musical and theatrical shows. You will spend a lot of your time on stage, but there is more to this course than performing. Some parts of the course are delivered as core subjects. You will learn all about the arts industry and the different job roles that exist within this sector. You will go behind the scenes, discover how a show is created, where the props come from, and how they are designed and built. You will think about the different ways that performing artists create a sense of drama on the stage and you will begin to study a range of musical and acting techniques and styles.

Music students will develop their performance skills, music theory and composition and gain a foundation of knowledge with the music equipment to support live events.

In addition to your practical training, you will also develop your ICT skills and produce written work and marketing material, such as posters and leaflets, to help advertise your shows.

PROGRESSION: With your Diploma you can choose to study a HNC in Performing Arts, followed by a university degree in Drama, Dance or Theatrical Performance. You can choose from a range of job roles in the creative and performing arts industries. Why not become a Choreographer and create new dance pieces? Or co-ordinate set, costume and sound design as a Production Manager? You could even choose to specialise in costume design, lighting production or dance therapy.

COURSE LENGTH: 1 YEAR



OPEN EVENTS

SAT 17TH OCT 11AM-2PM ALL CAMPUSES
TUES 24TH NOV 5PM-8PM WORCESTER CAMPUS
THURS 4TH FEB 5PM-8PM WORCESTER CAMPUS



APPLY HERE
WWW.HOWCOLLEGE.AC.UK
08448 802 500



**WE HAVE
STATE OF THE
ART DIGITAL
AND ANALOGUE
RECORDING
STUDIOS**

★ **EDUCATION** ★

**WE HAVE
EXCELLENT LINKS
TO THE ARTIX
THEATRE ONE OF
WORCESTERSHIRE'S
PREMIER ARTS
VENUES**



Extended Diploma in Digital Music Production & Performance Technology Level 3

Bromsgrove BMUS-ED3-1618PR
Worcester WMUS-ED3-1618PR

From recording and production, live sound and multimedia to working backstage, music technology covers a range of exciting areas and our Extended Diploma will introduce you to this dynamic industry. You will have the opportunity to work with the latest studio, live and computer-based technologies, and develop the skills you need to progress to higher education or a job in the industry. You will have the chance to produce your own music, set up sound, staging and lighting for live performances, gain industry standard training on computer based recording packages and even develop the technical and safety skills required to work backstage.

PROGRESSION: Upon successful completion of this course you can continue onto a Foundation Degree or HND in Music Production, or a HND or BA (Hons) course at university. You can also progress into employment in the music industry in a variety of roles including; Sound Engineer, Producer, Live Sound and Stage Technician and Events Planner.

COURSE LENGTH: 2 YEARS



OPEN EVENTS
SAT 17TH OCT 11AM-2PM **ALL CAMPUSES**
TUES 24TH NOV 5PM-8PM **WORCESTER CAMPUS**
THURS 26TH NOV 5PM-8PM **BROMSGROVE CAMPUS**
TUES 2ND FEB 5PM-8PM **BROMSGROVE CAMPUS**
THURS 4TH FEB 5PM-8PM **WORCESTER CAMPUS**



APPLY HERE
WWW.HOWCOLLEGE.AC.UK
08448 802 500





Royal Conservatoire
of Scotland

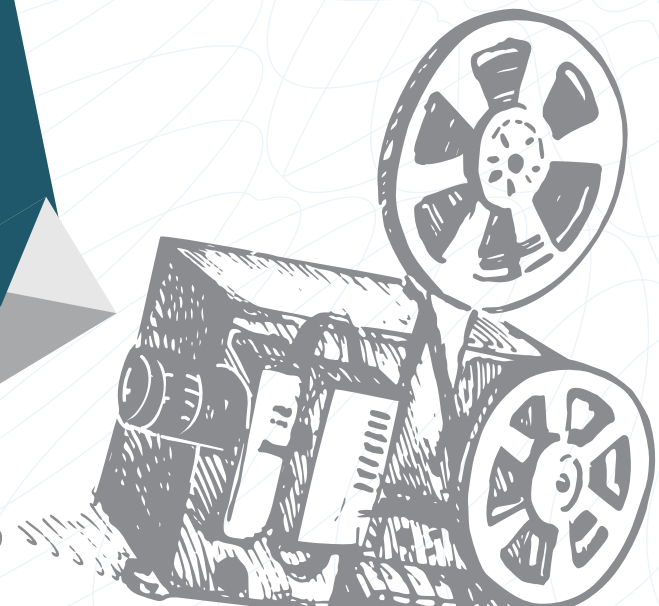
Cerys Jones
Performing Arts Students

After completing her course at HoW College, Cerys managed to land the main role of Maria in both West Side Story and Sound of Music. As well as this, she has accepted a place at the Royal Conservatoire of Scotland, which is one of the most highly accredited schools in the UK, to do her BD Hons in Musical Theatre.



MYSTICAL FANTASY

Hair and Beauty students from the Heart of Worcestershire College raised £350 for Birmingham Children's Hospital at their 'Final Fantasy' fundraiser. The students helped raise money for the local charity with a number of fun activities including a tombola, temporary tattoos, a cake sale and lucky dips as well as manicures for members of the public, while Level 2 and 3 Hair and Make-up Artistry students spent eight hours completing full and half body painting which was then showcased at an in-house competition.



Extended Diploma in Performing Arts for Film, Television & Stage Level 3

Bromsgrove BPER-ED3-1618PR
Worcester WPER-ED3-1618PR

Are you a natural performer? Do you thrive under the spotlight and enjoy performing to an audience? Could you see yourself as the next big movie, stage or TV star? Then our Diploma in Performing Arts for Film, Television and Stage is the perfect course for you. Designed to deliver training in all aspects of the performing arts industry, this course will prepare you for higher education or employment in many areas of the industry. This exciting and fast-paced course reflects the working world of performing arts offering you a great deal of practical performance opportunities including public performance and regular 'in-house' work.

Throughout the course you will cover a variety of aspects of the three disciplines including; Ensemble Singing, Solo Performance, Ballet, Contemporary and Street Dance, Musical Theatre performance, Devised and Scripted Drama, Improvisation and Physical Theatre. You also have the opportunity to study a number of practitioners from these areas as well as work in the technical aspects of theatre including; Theatrical Sounds and Lighting Design and Operation, Stage Management and Set Construction. You'll also get to study specialist units which may include: Principles of Acting, Dance Performance, Developing Physical Theatre, Applying Physical Theatre, Musical Theatre Performance, Theatre for Children, Variety Theatre, Devising Plays, Singing for Actors and Dancers, Auditions for Actors, Contemporary Theatre Performance, Classical Theatre Performance, Healthy Performer and International Dance.

As well as the practical aspects of the course, you will carry out research into theatrical history, work on character profiling and experiment with creating budget sheets for performing arts productions. The course is a multi-disciplinary course where equal importance is placed upon drama, singing and dance.

PROGRESSION: After completing your Extended Diploma, you will be ready to enrol in a specialist Dance School, Drama School or Music Academy. You may also like to consider a HNC in Performing Arts or a university degree in a related subject. With further training, hard work and dedication, you could become a Theatre Director, Stage Manager or an Actor in a West End musical!

COURSE LENGTH: 2 YEARS



OPEN EVENTS

SAT 17TH OCT 11AM-2PM ALL CAMPUSES
TUES 24TH NOV 5PM-8PM WORCESTER CAMPUS
THURS 26TH NOV 5PM-8PM BROMSGROVE CAMPUS
TUES 2ND FEB 5PM-8PM BROMSGROVE CAMPUS
THURS 4TH FEB 5PM-8PM WORCESTER CAMPUS



APPLY HERE
WWW.HOWCOLLEGE.AC.UK
08448 802 500

Extended Diploma Make up for Film, Television & Stage Level 3

Bromsgrove BPRO-ED3-1618PR

Do you see yourself working behind the scenes of television or theatre? Do you want to advance your skills and knowledge of make-up and costume design? Could you see yourself as the next Charlotte Tilbury or Bobbi Brown? Then this course is the perfect way to build upon your craft and explore new techniques. Throughout the course you will take your skills and experience onto an advanced level, giving you the opportunity to get into a highly competitive but rewarding career.

Over the two years you will be gaining knowledge and skills in three areas; Make-Up, Costume and Hairdressing, all aimed at a career backstage. The course will initially give you the foundations in all three areas, alongside the knowledge of understanding production management and financing.

As you progress, your skill set will develop allowing you to create more elaborate work for use in production and photographic images.

PROGRESSION: The knowledge and experience developed within the course can be useful when seeking employment in television, film, theatre, fashion houses, magazines, modelling agencies, as well as local salons, spas, beauty counters, weddings and proms. Make-up artists can also do freelance work.

COURSE LENGTH: 2 YEARS



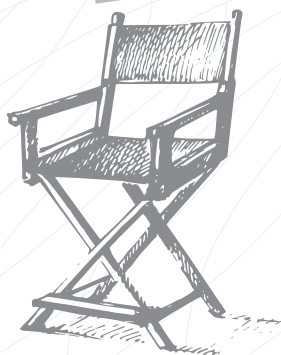
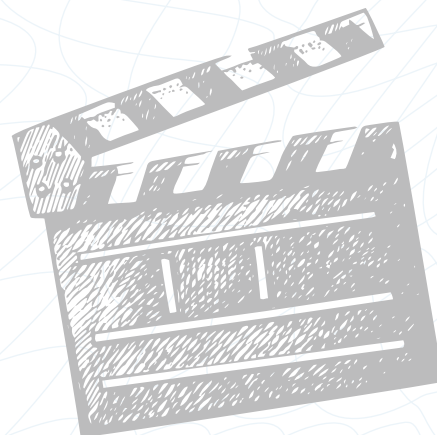
OPEN EVENTS

SAT 17TH OCT 11AM-2PM ALL CAMPUSES
THURS 26TH NOV 5PM-8PM BROMSGROVE CAMPUS
TUES 2ND FEB 5PM-8PM BROMSGROVE CAMPUS



APPLY HERE

WWW.HOWCOLLEGE.AC.UK
08448 802 500





**AT THE
HEART
OF YOUR
INNOVATION**



**ENTERPRISE AND
INNOVATION**



SUBJECT AREA
ENTERPRISE AND INNOVATION

COURSE LENGTH
1 YEAR TO 2 YEARS



SUBJECT AREA
ENTERPRISE AND INNOVATION

LOCATIONS

REDDITCH

WORCESTER

OPEN EVENTS

SAT 17TH OCT 11AM-2PM ALL CAMPUSES

TUES 24TH NOV 5PM-8PM WORCESTER CAMPUS

THURS 26TH NOV 5PM-8PM REDDITCH CAMPUS

TUES 2ND FEB 5PM-8PM REDDITCH CAMPUS

THURS 4TH FEB 5PM-8PM WORCESTER CAMPUS

COURSE LENGTH

1 YEAR TO 2 YEARS

LOCATIONS

REDDITCH

WORCESTER

FUTURE POTENTIAL SALARY

RANGING FROM £9.79PH TO £18.05PH

JOBS IN WEST MIDLANDS

UPTO 15,422 COURSE DEPENDENT

JOBS IN WEST MIDLANDS

UPTO 15,422 COURSE DEPENDENT

Diploma in Business Level 2

Redditch RBUS-DP2-1617PR
Worcester WBUS-DP2-1617PR

What comes to mind when you think of working in business? Paperwork and meetings? Making big decisions? This may be true, but it's only part of what the business world has to offer. This is a fresh and modern industry, full of exciting ideas. It rewards ambition, innovation and confidence. Have you ever wondered why some companies make huge amounts of money but others go bust? Or watched 'Dragon's Den' and thought you could do better? With a Diploma in Business, Level 2, you will gain the knowledge, values and skills you need to kick-start a great career in the industry.

We offer a hands-on approach to learning that mixes the study of real life businesses and case studies, with lectures, group discussion and independent study. You will explore the main sectors of the industry, including; Marketing, Finance, Personnel and Enterprise. You will think about the way that different businesses work, how they build relationships with their customers, how they manage their money and what they do to look after their staff. You will also learn about the challenges of starting a small business and running a company online.

PROGRESSION: If you are passionate about business, then you will want to progress to our Extended Diploma in Business, Level 3. Alternatively, you could think about going straight into employment and starting off with a junior post in insurance, banking, sales, retail or administration.

COURSE LENGTH: 1 YEAR



OPEN EVENTS

SAT 17TH OCT 11AM-2PM ALL CAMPUSES
TUES 24TH NOV 5PM-8PM WORCESTER CAMPUS
THURS 26TH NOV 5PM-8PM REDDITCH CAMPUS
TUES 2ND FEB 5PM-8PM REDDITCH CAMPUS
THURS 4TH FEB 5PM-8PM WORCESTER CAMPUS



APPLY HERE

WWW.HOWCOLLEGE.AC.UK
08448 802 500



Extended Diploma in Business Level 3

Redditch RBUS-ED3-1618PR
Worcester WBUS-ED3-1618PR

Are you fascinated by the 'dot-com' world of business? Do you think logically and enjoy solving problems? Do you dream of running and owning your own business? Then this is the course for you. Our Extended Diploma in Business, Level 3, introduces you to the main sectors of the industry, and encourages you to follow your own area of interest and develop your personal strengths. It will equip you with the analytical skills and business knowledge you need to progress to higher education. Perfect if you are thinking about studying; business, finance, law or marketing at university. You will develop a sound knowledge and understanding of business and finance through a combination of lectures, tutorials and independent study. You will also learn about how different types of businesses recruit, communicate, manage their finances and use their resources.

You will be encouraged to think about a range of new and exciting topics, using real-life case studies and class trips to widen your practical knowledge of the sector. You will also learn about aspects of Employment Law, Product Promotion, Internet Marketing, International Business and Web Design.



OPEN EVENTS

SAT 17TH OCT 11AM-2PM ALL CAMPUSES
TUES 24TH NOV 5PM-8PM WORCESTER CAMPUS
THURS 26TH NOV 5PM-8PM REDDITCH CAMPUS
TUES 2ND FEB 5PM-8PM REDDITCH CAMPUS
THURS 4TH FEB 5PM-8PM WORCESTER CAMPUS



APPLY HERE

WWW.HOWCOLLEGE.AC.UK
08448 802 500

PROGRESSION: Upon successful completion of this course you may want to continue on to our Foundation Degree in Business. Alternatively you could seek employment in this busy and exciting industry. You could become an Accountant, Project Manager, Retail Manager, Human Resource Advisor or Public Relations Officer. Or why not use your new business mindset to become an entrepreneur?

COURSE LENGTH: 2 YEARS



Diploma for IT Professionals Level 2

Redditch RICT-DP2-1617PR
Worcester WICT-DP2-1617PR

What is a network? How do I make a mobile app? Can I create my own webpage? If you find yourself asking these and other computer-related questions, then you need this course. Our Diploma for IT Professionals, Level 2, will introduce you to the world of computers and help you take your first-step onto the IT career ladder. By the end of the course you will be aware of networking essentials, know how to recognise different types of hardware and software, and be ready to work in the world of IT. Our hands-on course will introduce you to a range of IT subjects. You will discover how a computer works and how to set up an IT network. You will also learn how to create graphics, webpages website, multimedia application and develop your communication skills.

PROGRESSION: If you want to take your skills to the next level, you will want to take our Extended Diploma in IT, Level 3. With a Diploma for IT Professionals, Level 2, you can choose to enter a range of career pathways, including hardware retail, technical or network support, database, administration, web games, or software development.

COURSE LENGTH: 1 YEAR

OPEN EVENTS



SAT 17TH OCT 11AM-2PM ALL CAMPUSES
TUES 24TH NOV 5PM-8PM WORCESTER CAMPUS
THURS 26TH NOV 5PM-8PM REDDITCH CAMPUS
TUES 2ND FEB 5PM-8PM REDDITCH CAMPUS
THURS 4TH FEB 5PM-8PM WORCESTER CAMPUS



APPLY HERE
WWW.HOWCOLLEGE.AC.UK
08448 802 500



"The College really helped me to get to the position I am in now; not only by offering me such an advanced course, to gain real qualifications, but also by pushing me to get the best grades as I possibly could. It also gave me that independence to help me mature as a person whilst studying at all levels."

Lewis Liggins
Computing student

Lewis gained a full time position as a Technical Trainee with OGL Computer after completing a work experience placement with the company.



"This course has by far exceeded my expectations in achieving my future goals for a career within the business sector. Each unit covered has looked in depth at how a typical business should be run, which I can then apply to everyday issues in the business world and our economy. Help from the lecturers has led me to want to further my studies with a degree in Business Management once I have completed this course."

Danni Williams
Previous Business student



Extended Diploma in IT Level 3

Redditch RITP-ED3-1618PR
Worcester WITP-ED3-1618PR

If you are dedicated to a career in IT and looking to develop your skills to the next level, then this is the perfect course for you. Our Diploma in IT, Level 3, is an advanced qualification that will provide you with a route to university. It mixes theory with practical study to give you the best head start in the industry. In the modern world, almost every job involves the use of computers and IT is essential to the daily running of many businesses and companies. With our Diploma, you will be ready to progress to further study or begin work as an IT professional. Our Diploma will help you to develop a range of skills and techniques in IT from basic knowledge of computer systems to a more advanced understanding of programming, technical support and repair. You will learn how a computer works, how to design and maintain networks, and how companies use information systems to store and use data. You will have the opportunity to design your own software, develop your own website, program your own computer game and make a mobile application. You will also have the chance to improve your employability skills by working on your communication skills and interview techniques.

PROGRESSION: Upon successful completion of this course you can choose progress on to university or to our own HND in Computing and Systems Development or Foundation Degree in Cyber Security. Alternatively you may like to consider a career as an IT Network Support Engineer, a Website Developer, Graphic Designer, CAD Technician, Software Engineer, Programmer, Analyst, IT Trainer or even Computer Games Developer.

COURSE LENGTH: 2 YEARS

OPEN EVENTS



SAT 17TH OCT 11AM-2PM ALL CAMPUSES
TUES 24TH NOV 5PM-8PM WORCESTER CAMPUS
THURS 26TH NOV 5PM-8PM REDDITCH CAMPUS
TUES 2ND FEB 5PM-8PM REDDITCH CAMPUS
THURS 4TH FEB 5PM-8PM WORCESTER CAMPUS



APPLY HERE
WWW.HOWCOLLEGE.AC.UK
08448 802 500

Diploma in Applied Science Level 2

Redditch RASC-DP2-1617PR

Do you love experimenting? Are you practical, and passionate about science? Would you like to be a Crime Scene Investigator? During this course you will explore a range of topics within science, technology, engineering and maths. You will translate the theory behind the science into 'real life' experience. Covering an expansive subject area you will improve your knowledge of the core elements of science while also having the opportunity to explore specialist modules such as; Crime Scene Investigation, Practical Experience and Scientific Design.

PROGRESSION: Upon successful completion of your Diploma in Applied Science, Level 2, you can then choose to stay at HoW College and progress onto the Extended Diploma in Applied Science, Level 3. Alternatively this course will allow you to progress into a career in laboratory work, scientific surveying or technician work.

COURSE LENGTH: 1 YEAR

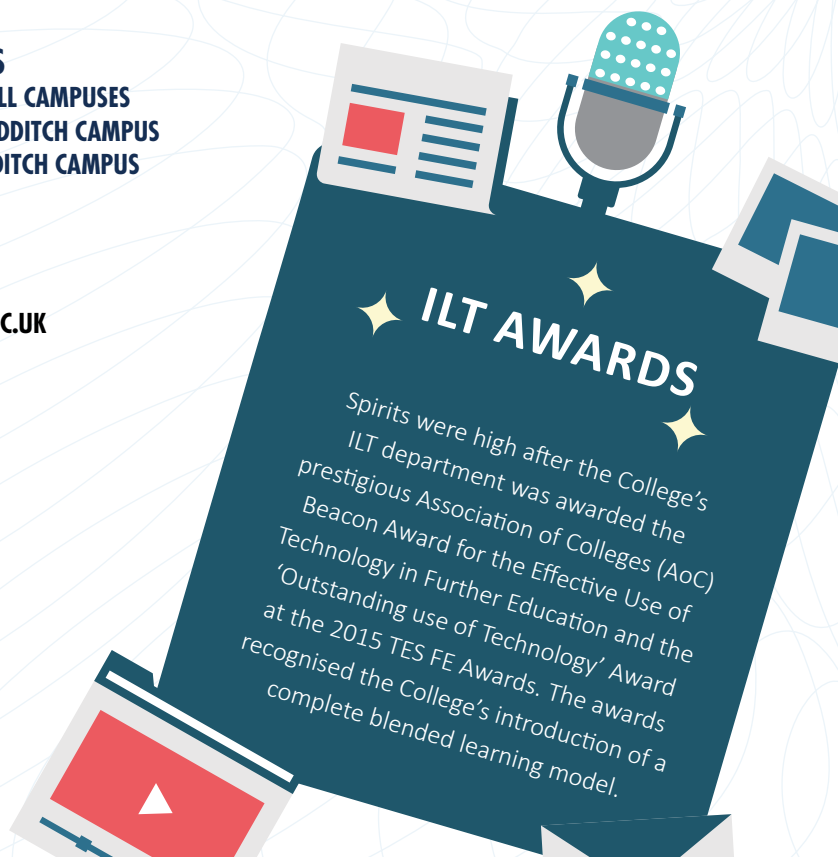


OPEN EVENTS

SAT 17TH OCT 11AM-2PM ALL CAMPUSES
THURS 26TH NOV 5PM-8PM REDDITCH CAMPUS
TUES 2ND FEB 5PM-8PM REDDITCH CAMPUS



APPLY HERE
WWW.HOWCOLLEGE.AC.UK
08448 802 500



Extended Diploma in Applied Science: Forensic, Medical or General Level 3

Redditch RASC-ED3-1618PR

Would you like to become a Forensic Scientist? Could you see yourself as a Crime Scene Investigator? Are you interested in the way things work? If so this course could be the one for you. During the course you will study modules in; Physiology of Human Body Systems, Microbiology, Genetics, Practical Chemical Analysis, Medical Physics Techniques, Chemical Laboratory Techniques, Criminology, Forensic Evidence Collection and Analysis, Criminal Psychology and Forensic Psychology.

PROGRESSION: Learners can either progress on to the HND Applied Biology course at HoW College or apply to university to study a science or psychology related course. It is also possible to gain employment in a laboratory as a Science Technician in settings such as the NHS, schools or in an industrial laboratory.

COURSE LENGTH: 2 YEARS



OPEN EVENTS
SAT 17TH OCT 11AM-2PM ALL CAMPUSES
THURS 26TH NOV 5PM-8PM REDDITCH CAMPUS
TUES 2ND FEB 5PM-8PM REDDITCH CAMPUS



APPLY HERE
WWW.HOWCOLLEGE.AC.UK
08448 802 500

**AT THE
HEART
OF YOUR
LEARNING**



**INCLUSIVE
LEARNING**



SUBJECT AREA
INCLUSIVE LEARNING

COURSE LENGTH
6 WEEKS TO 1 YEAR



LOCATIONS

REDDITCH

WORCESTER

OPEN EVENTS

SAT 17TH OCT 11AM-2PM ALL CAMPUSES

TUES 24TH NOV 5PM-8PM WORCESTER CAMPUS

THURS 26TH NOV 5PM-8PM REDDITCH CAMPUS

TUES 2ND FEB 5PM-8PM REDDITCH CAMPUS

THURS 4TH FEB 5PM-8PM WORCESTER CAMPUS

POSSIBLE FUTURE PROGRESSION
RELEVANT LEVEL 1 AND LEVEL 2 COURSES



SUBJECT AREA
INCLUSIVE LEARNING

COURSE LENGTH
6 WEEKS TO 1 YEAR

LOCATIONS

REDDITCH

WORCESTER

Gateway

Redditch RGWY-CE1-1617PR
RGWA-CE1-1617PR

Worcester WGWY-CE1-1617PR
WGWA-CE1-1617PR

Do you enjoy learning in a variety of ways? Do you like to work at your own pace and need support to help you achieve your goals? If the answer is yes, then this is the course for you. Our Gateway programme will help you learn the core life skills that you need to develop your personal, social and educational wellbeing. We offer a personalised learning programme built around your own needs and aspirations. It will put you on track to being confident, making your own decisions and living more independently. This course is designed to fit around your pace of learning and can take up to four years. Learners on the Gateway programme are supported at all times throughout the college day by members of the Learning Support team.

PROGRESSION: Towards the end of each academic year, you will be able to discuss progression opportunities with your tutor. You may go on to a higher level course at the end of your studies if you have shown sufficient progression.

COURSE LENGTH: 1 YEAR



OPEN EVENTS

SAT 17TH OCT 11AM-2PM ALL CAMPUSES
TUES 24TH NOV 5PM-8PM WORCESTER CAMPUS
THURS 26TH NOV 5PM-8PM REDDITCH CAMPUS
TUES 2ND FEB 5PM-8PM REDDITCH CAMPUS
THURS 4TH FEB 5PM-8PM WORCESTER CAMPUS



APPLY HERE
WWW.HOWCOLLEGE.AC.UK
08448 802 500

BUSTING
College
MYTHS
#3

**VOCATIONAL QUALIFICATIONS
ARE NOT EASY AND CAN
LEAD ONTO UNIVERSITY OR
EMPLOYMENT**

Many people think vocational qualifications are the easy route for those who are not that academic. This is not the case. Vocational training is an alternative way to study and students who choose this route have an excellent opportunity to go onto university or find a job. In fact some universities prefer vocational qualifications as it provides students with the hands on skills they will be expected to use at university.



Horizons

Redditch RHZN-CE3-1617PR
RHZN-CT1-1617PR

Worcester WHZN-CT1-1617PR
WHZN-CE1-1617PR

Would you like to get a job but don't feel ready to enter the world of work yet? Do you need help to develop your personal, social and employment skills? Do you like to work at your own pace? Are you eager to learn but need extra help in developing your skills? If this sounds like you, then Horizons will get you on the right track. This course offers a personal learning programme that allows you to make your own choices and work towards your own learning needs. You will develop a range of personal, social and vocational skills that will help you progress to further study or prepare you for the world of work.

PROGRESSION: If you achieve a reasonable standard of performance and achievement on this course, you may wish to explore one of the Inclusive Learning curriculum courses offered at the College e.g. Catering or Care. However, for those who have achieved their Functional Skills Level 1, it may be suitable to consider progression onto a Level 2 course at college. Progression into work is also encouraged and supported either directly from the Horizons course or via the Supported Internships programme.

COURSE LENGTH: 1 YEAR

OPEN EVENTS



SAT 17TH OCT 11AM-2PM ALL CAMPUSES
TUES 24TH NOV 5PM-8PM WORCESTER CAMPUS
THURS 26TH NOV 5PM-8PM REDDITCH CAMPUS
TUES 2ND FEB 5PM-8PM REDDITCH CAMPUS
THURS 4TH FEB 5PM-8PM WORCESTER CAMPUS



APPLY HERE
WWW.HOWCOLLEGE.AC.UK
08448 802 500



SAS: Sports & Services

Redditch RSAS-DP1-1617PR
Worcester WSAS-DP1-1617PR

Are you 16-18 years of age and interested in a career in either sports or services but want to find out and experience more before committing to a full time Level 2 course in the subject? Maybe you need extra support to help you achieve your goals or just lack the confidence, if so, welcome to SAS.

You will experience and get involved in a wide variety of exciting and challenging learning activities which will give you a realistic insight into the vocational areas of sport and public services. These will include a range of practical and theoretical sessions around team building, health and fitness, relating to sport and services including nutrition (meal planning), gym sessions, track sessions and cross country. You'll also participate in a number of visits and will have frequent talks from guest speakers including police, fire rescue service, ambulance, Army, Navy, RAF, rugby club, cricket club, football club and the prison service. Residential and field trips, as well as group projects and careers guidance, are all part of the experience.

PROGRESSION: Potential progression includes apprenticeships, employment or further education. Many of our learners progress onto Level 1 and Level 2 programmes in a variety of vocational areas.

COURSE LENGTH: 1 YEAR

OPEN EVENTS

SAT 17TH OCT 11AM-2PM ALL CAMPUSES
TUES 24TH NOV 5PM-8PM WORCESTER CAMPUS
THURS 26TH NOV 5PM-8PM REDDITCH CAMPUS
TUES 2ND FEB 5PM-8PM REDDITCH CAMPUS
THURS 4TH FEB 5PM-8PM WORCESTER CAMPUS



APPLY HERE
WWW.HOWCOLLEGE.AC.UK
08448 802 500

FESTIVAL AT THE FOUNTAINS/ FAMILY FUN DAY

Every year we kick start summer with our annual Family Fun Day and Festival at the Fountains. Taking place at all our campuses the fun filled family day out features a host of activities for all ages including cake modelling, face painting, hair and beauty treatments, pedal karts, computer hacking, music performances, an inflatable assault course, treasure hunts and much more!

Supported Internships

Redditch RSIN-CT1-1617PR
Worcester WSIN-CT1-1617PR

Are you looking to move into employment but don't know where to start? Do you need extra support to help you achieve your goals? Welcome to Supported Internships. This course will help you develop your personal, social and in particular your employability skills to help you make a successful progression into paid or voluntary employment. Our programme will help you develop a range of employability skills through the following modules; CV Writing, Completing Application Forms, Interview Skills, Health and Safety, Work Schedules, Communicating with Work Colleagues and Rights and Responsibility in the Workplace. Through a variety of innovative and engaging learning processes, with a strong emphasis on the world of work, you will improve your confidence ready to take up employment. The main qualification is one day a week in college with the rest of time spent with an employer. We will guide you through the application and interview process and you will also be assigned a job coach to help with travel, training if required and support you in the workplace.

PROGRESSION: The aim of this course is to find you employment either during or soon after.

COURSE LENGTH: 1 YEAR



OPEN EVENTS

SAT 17TH OCT 11AM-2PM ALL CAMPUSES
TUES 24TH NOV 5PM-8PM WORCESTER CAMPUS
THURS 26TH NOV 5PM-8PM REDDITCH CAMPUS
TUES 2ND FEB 5PM-8PM REDDITCH CAMPUS
THURS 4TH FEB 5PM-8PM WORCESTER CAMPUS



APPLY HERE

WWW.HOWCOLLEGE.AC.UK
08448 802 500

"The internship has changed my life. It has improved my confidence and given me my own independence. I have learnt lots of new skills and I love working with my colleagues as they are really supportive and make me laugh!"

Charlotte O'Keeffe
Supported Internship



STEP

Redditch RSTP-CT1-1617PR
Worcester WSTP-CT1-1617PR

Are you looking to gain a qualification but not sure where to start? Do you need extra support to help you achieve your goals? Welcome to STEP. This study programme will help you develop your confidence and abilities in different skills to help you make successful progression into further education, work based learning or employment. Students will participate in a range of practical and theoretical sessions designed to support their development in areas such as confidence and career planning, in addition to vocational and enterprise skills.

PROGRESSION: Potential progression includes apprenticeships, employment or further education. Many of our learners progress onto Level 1 and Level 2 programmes in a variety of vocational areas.

COURSE LENGTH: 1 YEAR

OPEN EVENTS



SAT 17TH OCT 11AM-2PM ALL CAMPUSES
TUES 24TH NOV 5PM-8PM WORCESTER CAMPUS
THURS 26TH NOV 5PM-8PM REDDITCH CAMPUS
TUES 2ND FEB 5PM-8PM REDDITCH CAMPUS
THURS 4TH FEB 5PM-8PM WORCESTER CAMPUS



APPLY HERE
WWW.HOWCOLLEGE.AC.UK
08448 802 500

BUSTING *College* MYTHS #4

PARENTS CAN STILL APPLY FOR CHILD BENEFITS

You are still eligible to claim child benefits if your child is enrolled onto a full -time college course in September.

For more information visit:
www.gov.uk/child-benefit-16-19

"It's thanks to the Prince's Trust programme at HoW College that I've had the confidence to accept this opportunity. I learnt loads whilst at the College, including team leading and communication skills which have given me the courage to go forward and put everything I've learnt into practice."

I'm really looking forward to going to Guatemala and helping out and I'd encourage anyone who is considering doing the Prince's Trust programme at the College to go for it as it was possibly the best experience of my life so far."

Kerry Simons
who successfully completed
the Prince's Trust,
volunteering in Guatemala



Prince's Trust Programme

Worcestershire WPTT-CT1-1617PR

Are you unemployed, uninspired and unsure of your future? Would you like a nationally recognised qualification and the chance to make a real difference in your local community? Then why not become a member of the team. Our unique Prince's Trust programme will give you the skills, confidence and self-belief that you need to succeed in work, education or training. Our course will help to improve your personal development and practical skills through a focus on teamwork and teambuilding activities. You will get involved in community projects, work placements and fund-raising activities, at the same time as achieving some great qualifications. Say goodbye to boredom and hello to your future. You will work as part of a team of up to fifteen other young people for twelve weeks. During this time, you will take on a range of community projects, gain two weeks work experience and go on an action-packed residential week with your team!

PROGRESSION: Our course will help you develop the skills you need to progress into further education, training or employment. Other courses in the Inclusive Learning element of the college include the STEP and S.A.S programmes or one of the Futures Focus programmes. You may also decide to do this course as an excellent way to develop your personal and confidence skills prior to joining a Level 2 or 3 course, or whilst you are waiting to start your apprenticeship.

COURSE LENGTH: 12 WEEKS



OPEN EVENTS

SAT 17TH OCT 11AM-2PM ALL CAMPUSES
TUES 24TH NOV 5PM-8PM WORCESTER CAMPUS
THURS 4TH FEB 5PM-8PM WORCESTER CAMPUS



APPLY HERE

WWW.HOWCOLLEGE.AC.UK
08448 802 500



**AT THE
HEART
OF YOUR
INDUSTRY**



**SERVICES TO
PEOPLE**

WORCESTER CAMPUS

Deansway

Worcester,

WR1 2JF

01905 725555

REDDITCH CAMPUS

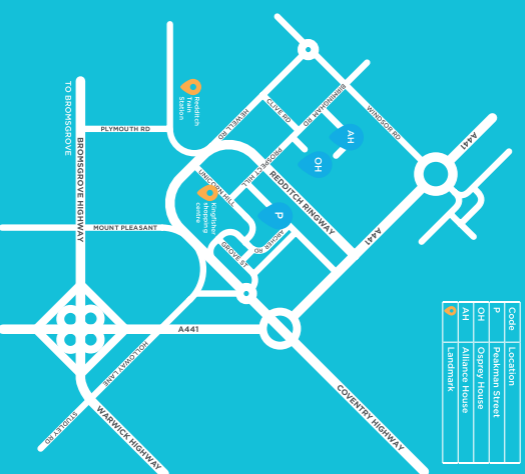
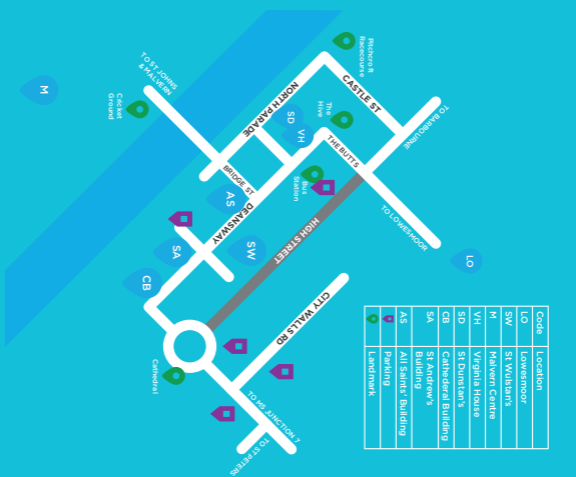
Peakman Street,

Redditch

B98 8DW

01527 572523

www.howcollege.ac.uk





SUBJECT AREA
SERVICES TO PEOPLE

COURSE LENGTH
1 YEAR TO 2 YEARS



LOCATIONS
REDDITCH
WORCESTER

OPEN EVENTS

SAT 17TH OCT 11AM-2PM ALL CAMPUSES
TUES 24TH NOV 5PM-8PM WORCESTER CAMPUS
THURS 26TH NOV 5PM-8PM REDDITCH CAMPUS
TUES 2ND FEB 5PM-8PM REDDITCH CAMPUS
THURS 4TH FEB 5PM-8PM WORCESTER CAMPUS

FUTURE POTENTIAL SALARY
RANGING FROM £6.76PH TO £10.37PH

JOBS IN WEST MIDLANDS
UPTO 7,838 COURSE DEPENDENT

SUBJECT AREA
SERVICES TO PEOPLE

COURSE LENGTH
1 YEAR TO 2 YEARS

LOCATIONS
REDDITCH
WORCESTER

JOBS IN WEST MIDLANDS
UPTO 7,838 COURSE DEPENDENT



Certificate in Hairdressing and Barbering Level 1

Worcester WHAB-CT1-1617PR

Are you passionate about the hair industry? Do you read fashion magazines in search of the latest hair trends or style disasters? Whether you are thinking of becoming a mobile stylist or dream of owning your own salon, our Level 1 course will introduce you to the world of hairdressing and barbering and provide you with the skills and training you need to develop a great career in the field. Within this course you will learn about both the theory and practice of hairdressing. At our on-site salon, you will have the opportunity to learn how to shampoo and condition, plait, twist and dress hair, as well as carrying out reception duties and promoting products to clients. You will also assist with colouring and perming services, and learn how to prepare and maintain work areas for Level 2 and 3 students.

PROGRESSION: With a Level 1 in Hairdressing and Barbering you can apply for salon work to assist stylists and gain practical experience. Alternatively you may want to progress to our Level 2 in Hairdressing or consider a modern apprenticeship in hairdressing or barbering, which will build on the skills you've already learned. As you progress, you can choose to specialise in areas such as bridal hair, barbering or colour technique.

COURSE LENGTH: 1 YEAR



OPEN EVENTS

SAT 17TH OCT 11AM-2PM ALL CAMPUSES
TUES 24TH NOV 5PM-8PM WORCESTER CAMPUS
THURS 4TH FEB 5PM-8PM WORCESTER CAMPUS



APPLY HERE

WWW.HOWCOLLEGE.AC.UK
08448 802 500



Diploma in Hairdressing Level 2

Redditch RHAI-CT2-1617PR
Worcester WHAI-CT2-1617PR

This course offers you the training and experience you need to develop a great career in hairdressing. It balances theory with some great hands-on experience. At our on-site salons, you will learn how to colour, cut, style, set and blow-dry hair. You will also learn how to advise and consult with clients, and develop important teamwork and customer service skills. As you progress, you will begin to take on more demanding roles. This course provides you with the minimum qualification needed to qualify and register as a Hairdresser, so you can become a Junior Stylist as soon as you finish your last assignment!

PROGRESSION: Successful completion of this course will give you the opportunity to progress onto a Level 3 Hairdressing qualification. Alternatively you may wish to pursue a career within the hairdressing industry, e.g. salons, cruise ships.

COURSE LENGTH: 1-2 YEARS



OPEN EVENTS

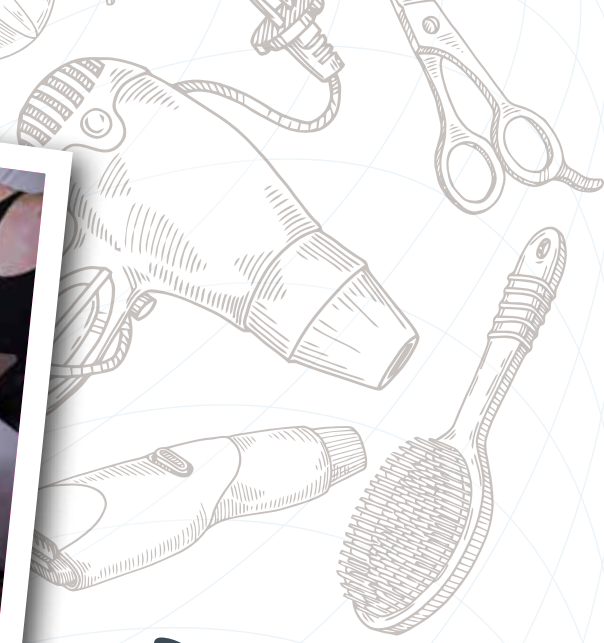
SAT 17TH OCT 11AM-2PM ALL CAMPUSES
TUES 24TH NOV 5PM-8PM WORCESTER CAMPUS
THURS 26TH NOV 5PM-8PM REDDITCH CAMPUS
TUES 2ND FEB 5PM-8PM REDDITCH CAMPUS
THURS 4TH FEB 5PM-8PM WORCESTER CAMPUS



APPLY HERE

WWW.HOWCOLLEGE.AC.UK
08448 802 500





ST DUNSTAN'S GRAND OPENING

The College recently opened the doors of its new creative learning quarter, St Dunstan's Building in Worcester with the seal of approval from both the Skills Minister Nick Boles and Coronation Street Star Samia Ghadie who plays the stylish Hairdresser, Maria Connor, in Coronation Street. The new learning quarter not only benefits HoW College students but also provides exceptional facilities for members of public to enjoy; such as our commercial Hair and Beauty Salon, Fountains, and The Palette Café.



HANNAH-LEE PLEDGER

PREVIOUS HAIRDRESSING STUDENT

is working at Trevor Sorbie in London. She completed her Level 2 and Level 3 as an apprentice.



Diploma in Hairdressing Level 3

Redditch RHAI-DP3-1617PR
Worcester WHAI-DP3-1617PR

Are you passionate about the hair industry? Whether you are a Senior Stylist or a Hair Technician, or simply dream of owning your own salon, this Level 3 course builds on the knowledge and skills you have gained from the Level 2 course to give you a deeper insight into the industry. As well as styling and dressing hair, you will learn how to promote products, undertake colour correction, and provide a client consultation service. You will also learn how to improve customer service and contribute to the financial effectiveness of a business. We even offer you the chance to take a business start-up course. Perfect if you are thinking of setting up your own salon or becoming a mobile stylist.

OPEN EVENTS



SAT 17TH OCT 11AM-2PM ALL CAMPUSES
TUES 24TH NOV 5PM-8PM WORCESTER CAMPUS
THURS 26TH NOV 5PM-8PM REDDITCH CAMPUS
TUES 2ND FEB 5PM-8PM REDDITCH CAMPUS
THURS 4TH FEB 5PM-8PM WORCESTER CAMPUS



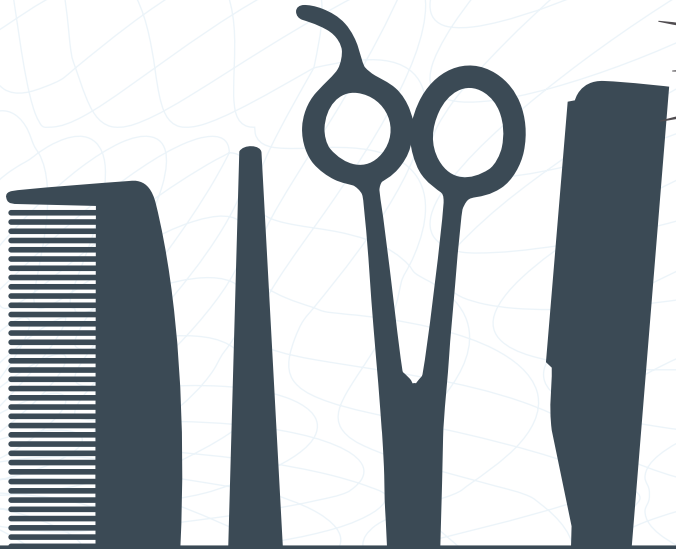
APPLY HERE
WWW.HOWCOLLEGE.AC.UK
08448 802 500

PROGRESSION: With a Hairdressing NVQ Level 3, you can become a specialist Hairstylist or Consultant. Hairdressing is an exciting business and there will be many options open to you in the fashion, beauty, film and theatre industries. With hard work and dedication, who knows, you might even become the next celebrity stylist.

You can also continue to a higher-level qualification such as Foundation Degree in Management, Innovation and Practice for the Hair, Beauty and Spa sector or in Theatrical Media Makeup & Costume.

COURSE LENGTH: 1 YEAR





DAVID APPLETON

PREVIOUS BARBERING STUDENT

Placed third in the prestigious junior men's cut and blow dry competition at the National Hairdressers' Federation's Blackpool International Hairdressing Championship



Diploma in Barbering Level 2

Redditch RBAR-DP2-1617PR

Do you dream of being a stylist to the stars? Owning your own barbering shop? This intermediate course provides students with essential, basic, technical, communication and numeracy skills which will give access to a variety of career options. You will learn how to advise and consult with clients, shampoo, condition and treat the hair and scalp, basic barbering techniques, cut facial hair to shape using basic techniques, dry and finish men's hair and change men's hair colour.

PROGRESSION: Successful completion of this course will allow you to consider progression onto a Diploma in Barbering, Level 3 (subject to successful interview). Alternatively you may also choose to progress to work-based training or employment.

COURSE LENGTH: 1 YEAR



OPEN EVENTS

SAT 17TH OCT 11AM-2PM ALL CAMPUSES
THURS 26TH NOV 5PM-8PM REDDITCH CAMPUS
TUES 2ND FEB 5PM-8PM REDDITCH CAMPUS



APPLY HERE

WWW.HOWCOLLEGE.AC.UK
08448 802 500



Diploma in Barbering Level 3

Redditch RBAR-DP3-1617PR

Do you have a passion for cutting hair? Would you like to get real life experience of working in a salon? This course will provide you with the final step you need before progressing into employment in Barbering. You will have the opportunity to work closely with clients, applying your newly learned hair design and cutting techniques to suit their needs. You will also gain essential knowledge for running and maintaining a salon as you progress through the course.

PROGRESSION: Successful completion of this course will open you up to the world of employment in the hair industry where you can look to pursue employment in a barbering or hairdressing salon.

COURSE LENGTH: 1 YEAR



OPEN EVENTS

SAT 17TH OCT 11AM-2PM ALL CAMPUSES
THURS 26TH NOV 5PM-8PM REDDITCH CAMPUS
TUES 2ND FEB 5PM-8PM REDDITCH CAMPUS



APPLY HERE

WWW.HOWCOLLEGE.AC.UK
08448 802 500



RICHARD FARMER
PREVIOUS BARBERING APPRENTICE

has now successfully opened his first salon. He employs his brother Joshua who we also trained and Richard has just taken on his first apprentice.

since 1952
AUTHENTIC
BARBER
SHOP
CLASSIC CUTS AND CLOSE SHAVES ✂

"I was sent on work experience from the College in my second year which was a fantastic opportunity as I was offered a Saturday job at a salon, which I then continued once I had finished in the June. I worked for my employer for six years, gradually working my way up to full time and doing further beauty courses. My employer then decided to retire which meant that I was able to take over the business."

Georgie Simmonds
owner of
Bewdley Beauty Clinic



Certificate in Beauty Level 1

Worcester WBEA-CT1-1617PR

Do you dream of owning or own beauty salon? Would you like to learn how to give a manicure and pedicure? And learn excellent customer service skills? The Certificate in Beauty Therapy, Level 1, will equip you with the skills and knowledge required to provide basic facial skincare and make-up treatments for clients, as well as basic manicure and pedicure treatments for the hands and feet. You will gain an insight into working with others in the hair and beauty sector, and knowledge of health, safety and hygiene requirements and customer service skills.

PROGRESSION: Successful completion of this course will allow you to progress onto the Diploma in Beauty Therapy, Level 2.

COURSE LENGTH: 1 YEAR



OPEN EVENTS

SAT 17TH OCT 11AM-2PM ALL CAMPUSES
TUES 24TH NOV 5PM-8PM WORCESTER CAMPUS
THURS 4TH FEB 5PM-8PM WORCESTER CAMPUS



APPLY HERE

WWW.HOWCOLLEGE.AC.UK
08448 802 500



Diploma in Beauty Therapy Level 2

Redditch RBEA-CT2-1617PR
Worcester WBEA-CT2-1617PR

Do you enjoy giving your friends manicures and facials? Or can't wait to try out the latest make-up trends? Do you dream of turning your passion for beauty into a career? If the answer is yes then this is the course for you. This course balances theory with some great hands-on experience. At one of our on-site salons you will learn how to provide manicures, pedicures, facials, waxing and eye treatments, and discover different ways to apply make-up. You will carry out reception duties, offer advice to customers and promote products to clients.

PROGRESSION: At the end of the qualification you can further develop your knowledge and skills by undertaking a technical level qualification in beauty at Level 3 or progress into a career as a Beauty Therapist in various contexts such as commercial beauty salons, independent/self-employed/mobile/home-based settings and beauty retail concessions.

COURSE LENGTH: 1-2 YEARS

OPEN EVENTS



SAT 17TH OCT 11AM-2PM ALL CAMPUSES
TUES 24TH NOV 5PM-8PM WORCESTER CAMPUS
THURS 26TH NOV 5PM-8PM REDDITCH CAMPUS
TUES 2ND FEB 5PM-8PM REDDITCH CAMPUS
THURS 4TH FEB 5PM-8PM WORCESTER CAMPUS



APPLY HERE
WWW.HOWCOLLEGE.AC.UK
08448 802 500

★ EDUCATION ★

Our students take part in various work experience opportunities including; creating casualty effects for a crime scene for the fire service!



Diploma in Beauty Therapy Techniques Level 3

Redditch RBEA -DP3-1617PR
Worcester WBEA-DP3-1617PR

Are you passionate about the beauty industry? Are you confident and able to communicate well with customers? Do you know your manicures from your pedicures? Whether you want to work on a cruise liner or dream of owning your own salon, this Level 3 course builds on the knowledge and skills you have gained from the Level 2 course to give you a deeper insight into the industry. You will learn how to carry out facial and body electrotherapy treatments, body massage and Indian head massage. You will also learn how to manage the reception desk, promote products and contribute to the financial effectiveness of a business.



OPEN EVENTS

SAT 17TH OCT 11AM-2PM ALL CAMPUSES
TUES 24TH NOV 5PM-8PM WORCESTER CAMPUS
THURS 26TH NOV 5PM-8PM REDDITCH CAMPUS
TUES 2ND FEB 5PM-8PM REDDITCH CAMPUS
THURS 4TH FEB 5PM-8PM WORCESTER CAMPUS



APPLY HERE
WWW.HOWCOLLEGE.AC.UK
08448 802 500

PROGRESSION: This qualification will prepare you for employment as a Beauty Therapist. You will also be eligible to join a professional association and gain insurance as a Beauty Massage Therapist. Career opportunities as a Beauty Massage Therapist exist in a variety of contexts, including, working in commercial beauty salons, working in destination and day spas, working on cruise ships and working independently/self-employed/mobile/home-based settings.

COURSE LENGTH: 1 YEAR



Diploma in Hairdressing & Beauty Therapy Level 1

Redditch RHBE-DP1-1617PR

Are you passionate about the hair and beauty industry? Do you read fashion magazines in search of the latest hair trends or style disasters? Whether you are thinking of becoming a mobile stylist or dream of owning your own salon, our Level 1 course will introduce you to the world of hairdressing and beauty to provide you with the skills and training you need to develop a great career in the field. Our one-year course offers a hands-on approach that balances basic theory with some great practical experience to give you the best possible start in the industry. You will develop skills in customer service, shampooing, blow drying, applying temporary colour, basic skin care and make up application, reception duties, basic nail art and working in the hair and beauty industry.

PROGRESSION: Successful completion of this course will allow you to look at progressing onto the Diploma in Hairdressing and Beauty Therapy, Level 2, or a hair only or beauty only level two pathway.

COURSE LENGTH: 1 YEAR



OPEN EVENTS

SAT 17TH OCT 11AM-2PM ALL CAMPUSES
THURS 26TH NOV 5PM-8PM REDDITCH CAMPUS
TUES 2ND FEB 5PM-8PM REDDITCH CAMPUS



APPLY HERE

WWW.HOWCOLLEGE.AC.UK
08448 802 500



Diploma in Hairdressing and Beauty Therapy Combined Level 2

Redditch RHBE-DP2-1618PR

Do you dream of owning your own salon? Are you interested in both hair and beauty techniques? Then this course could be for you. This course enables you to study two qualifications; the Diploma in Hairdressing and the Diploma in Beauty Therapy. You will achieve a Certificate in Beauty Therapy and Hairdressing at the end of year one and continue to complete the Diploma in year two. You will complete a variety of practical activities which includes styling, cutting, perming and colouring hair, facials, waxing, manicure, pedicure, nail art, identifying your client's needs, complying with health and safety, working as team, reception duties and retail sales; all activities will prepare you for the world of work.

PROGRESSION: Successful completion of this course will allow you to progress onto a Level 3 qualification in either Hairdressing or Beauty Therapy, or diversify into an alternative Level 2 programme within the area. You can also consider an apprenticeship pathway at Level 3. This will involve you gaining employment with an employer either in hairdressing or beauty therapy.

COURSE LENGTH: 2 YEARS



OPEN EVENTS

SAT 17TH OCT 11AM-2PM ALL CAMPUSES
THURS 26TH NOV 5PM-8PM REDDITCH CAMPUS
TUES 2ND FEB 5PM-8PM REDDITCH CAMPUS



APPLY HERE

WWW.HOWCOLLEGE.AC.UK
08448 802 500



Diploma in Hair & Media Make-Up Level 2

Redditch RHMU-DP2-1617PR
Worcester WHMU-DP2-1617PR

Do you keep up with new trends in the make-up industry? Do you like to experiment with new hair styles? Do you wonder how costume make-up is applied? If so our combined Level 2 in Hair and Media Make-Up could be the course for you. This is a one year course in which you will learn the skills needed to be a confident Hairdresser and the art of make-up application. This course will build your knowledge and skills to obtain a recognised qualification within the hair and beauty industry. The content of the course is very comprehensive including the art of dressing hair, photographic make-up application, client care and communication, shampooing, cutting, colouring of the hair, nail art, Mendhi design and plenty of hands on opportunities for you to be creative.

PROGRESSION: Successful completion of this course will allow you to consider progression onto the Diploma in Make-Up Artistry, Level 3.

COURSE LENGTH: 1 YEAR



OPEN EVENTS

SAT 17TH OCT 11AM-2PM **ALL CAMPUSES**
TUES 24TH NOV 5PM-8PM **WORCESTER CAMPUS**
THURS 26TH NOV 5PM-8PM **REDDITCH CAMPUS**
TUES 2ND FEB 5PM-8PM **REDDITCH CAMPUS**
THURS 4TH FEB 5PM-8PM **WORCESTER CAMPUS**



APPLY HERE
WWW.HOWCOLLEGE.AC.UK
08448 802 500



Diploma in Make-Up Artistry Level 3

Worcester WMUA-DP3-1617PR

Are you passionate about make-up and looking for a qualification to take you to a professional level? If the answer is yes, then this is the course for you. Our Diploma in Make-up Artistry, Level 3, will introduce you to a range of exciting make-up services. You will learn how to apply every day, special occasion and bridal make-up. You will also learn how to create make-up for media, special effects, camouflage, photography and fashion shows. We will even show you how to apply airbrush make-up and small prosthetic pieces. You will also learn how to provide make-up lessons for clients. Using fashion trends, social history, and cultural variety as your inspiration, you will use a range of materials to create spectacular and innovative personal projects. Let your mind whisk you away – and your hands follow!

PROGRESSION: From body painting for festivals to specialist make-up for burns-victims, make-up artistry is a valuable and artistic skill. You could use your qualification to become a Make-up Artist for Film, TV, Theatre or Fashion! If you would like to progress to higher education, you may want to consider a Foundation Degree in Make-up Artistry and Special Make-up Effects or a BA (Hons) in Specialist Makeup.

COURSE LENGTH: 1 YEAR



OPEN EVENTS

SAT 17TH OCT 11AM-2PM ALL CAMPUSES
TUES 24TH NOV 5PM-8PM WORCESTER CAMPUS
THURS 4TH FEB 5PM-8PM WORCESTER CAMPUS



APPLY HERE

WWW.HOWCOLLEGE.AC.UK
08448 802 500



Certificate in Introduction to Culinary Skills Level 1

Worcester WCUL-CT1-1617PR

Are you interested in the catering and hospitality industry? Do you have a passion for food and customer service? Then this Introduction to Culinary Skills could be the perfect match for you. Throughout the course you'll have the opportunity to investigate the hospitality industry, studying modules in; Menu Planning, Food Safety, Special Diets and Presentation Skills. You'll also have the opportunity to put your skills to the test with work placement opportunities throughout the duration of your course.

PROGRESSION: Successful completion of this course could allow you to continue onto a Level 2 qualification in Hospitality and Catering or gain a job as a commis chef in a professional kitchen.

COURSE LENGTH: 1 YEAR



OPEN EVENTS

SAT 17TH OCT 11AM-2PM ALL CAMPUSES
TUES 24TH NOV 5PM-8PM WORCESTER CAMPUS
THURS 4TH FEB 5PM-8PM WORCESTER CAMPUS



APPLY HERE
WWW.HOWCOLLEGE.AC.UK
08448 802 500







OSCARS EVENING AT ARCHERS

The spotlight was on Heart of Worcestershire College's BTEC Hospitality and Catering students as they rolled out the red carpet and hosted their first Oscar's themed night. Guests descended on Archers Restaurant, Peakman Street and enjoyed an evening of fine dining and live entertainment to help raise money for children's cancer charity CLIC Sargent. The students were responsible for all aspects of the night including preparing the food, organising the entertainment, decorating the venue and serving the food on the night.



Certificate in Hospitality and Catering Level 1

Redditch RHOS-CT1-1617PR

Do you have a keen interest in the world of hospitality and catering? Could you see yourself running your own kitchen or hotel? If so, then this is the perfect course for you. Our Certificate in Hospitality and Catering, Level 1, will provide you with the basic skills and knowledge to get started in this dynamic and fast-paced industry. Throughout your course you will study a variety of modules ranging from; Understanding Menus, Handing Payments, The Principles of Bar Service and Health and Safety in the Workplace.

PROGRESSION: Successful completion of this course could allow you to continue onto a Level 2 qualification in Hospitality and Catering.

COURSE LENGTH: 1 YEAR



OPEN EVENTS

SAT 17TH OCT 11AM-2PM ALL CAMPUSES
THURS 26TH NOV 5PM-8PM REDDITCH CAMPUS
TUES 2ND FEB 5PM-8PM REDDITCH CAMPUS



APPLY HERE

WWW.HOWCOLLEGE.AC.UK
08448 802 500





NVQ Diploma in Hospitality & Catering, Level 2

Redditch RHOS-DP2-1617PR

If you are working in the catering industry and wish to develop your skills and progress your career in the industry, then this is the place to start. The course aims to give a good introduction to the catering industry. You will learn many different food preparation and cooking methods and you will learn all aspects of hygiene and food safety. This course will give you a sound basis in order to achieve a NVQ Diploma in Hospitality and Catering, Level 2. This course will help you to develop good practical skills in food preparation and cookery. To be successful you will need to learn the theory to support these skills and you will be tested on your knowledge. You will also work in the catering kitchen preparing meals to serve to the general public.

PROGRESSION: Successful completion of this course could allow you to continue onto a Level 3 qualification in Hospitality and Catering or gain a job as a commis chef in a professional kitchen.

COURSE LENGTH: 1 YEAR



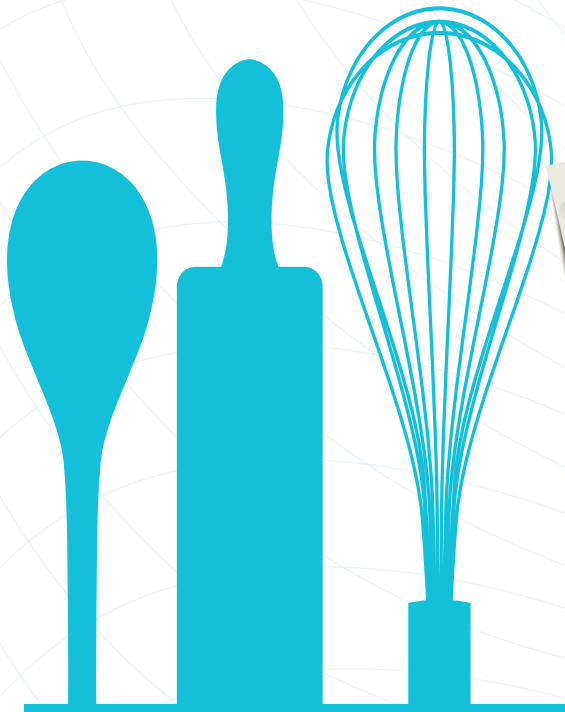
OPEN EVENTS

SAT 17TH OCT 11AM-2PM ALL CAMPUSES
THURS 26TH NOV 5PM-8PM REDDITCH CAMPUS
TUES 2ND FEB 5PM-8PM REDDITCH CAMPUS



APPLY HERE
WWW.HOWCOLLEGE.AC.UK
08448 802 500





**We have excellent
partnership
arrangements for
employment in
Worcestershire
and London based
restaurants and hotels.**

"Since starting the course I have gained confidence in my own abilities as a chef. The course has taught me effective time management and organisational skills which are key in this industry. The tutors push you in the right direction to help you achieve your potential and they even managed to secure me a work placement at the Michelin-starred restaurant which I am now working at."

Josh Giles
previous hospitality student



Diploma in Introduction to Professional Cookery Level

Worcester WPCK-DP1-1617PR

Are you passionate about food? Do you dream of a career in catering but don't know where to start? Whether you are a school leaver or looking to change profession, this course will introduce you to the world of cookery and provide you with the skills and training you need to get a head start in the industry. You will learn different cooking methods, such as boiling, poaching, steaming, stewing, baking, roasting, grilling and frying. You will also learn how to prepare cold foods, pre-prepared foods and food for special diets. In addition to practical training, you will study a variety of topics and you'll also have the opportunity to enter major national competitions and take part in work experience placements and trips to catering establishments.

PROGRESSION: Successful completion of this course could allow you to continue onto a Level 2 qualification in Hospitality and Catering.

COURSE LENGTH: 1 YEAR



OPEN EVENTS

SAT 17TH OCT 11AM-2PM **ALL CAMPUSES**
TUES 24TH NOV 5PM-8PM **WORCESTER CAMPUS**
THURS 4TH FEB 5PM-8PM **WORCESTER CAMPUS**



APPLY HERE

WWW.HOWCOLLEGE.AC.UK
08448 802 500



Diploma in Professional Cookery Level 2

Worcester WPCCK-DP2-1617PR

This course aims to give a good insight into the catering industry. You will learn many different food preparation and cooking methods and you will learn all aspects of hygiene and food safety. This course will help you to develop good practical skills in food preparation and cookery. To be successful you will need to learn the theory to support these skills and you will be tested on your knowledge. You will also work in the catering kitchen preparing meals to serve to the general public.



OPEN EVENTS

SAT 17TH OCT 11AM-2PM ALL CAMPUSES
TUES 24TH NOV 5PM-8PM WORCESTER CAMPUS
THURS 4TH FEB 5PM-8PM WORCESTER CAMPUS



JOSH NOW
WORKS AT A
MICHELIN-STARRED
RESTAURANT IN
BIRMINGHAM

PROGRESSION: With a Diploma in Professional Cookery, Level 2, you can apply for assistant roles such as Waiter, Waitress, Bar Assistant, Junior Catering Assistant or Commis Chef. As you progress in your chosen area, you will begin to take on roles with more responsibility and potential. In the future, you could become a Catering Manager, Events Organiser or even run your own restaurant!

If you would like to gain a more advanced qualification, you may want to progress to our Diploma in Professional Cookery VRQ, Level 3, which will help you take your skills and techniques in cookery to the next level.

COURSE LENGTH: 1 YEAR



APPLY HERE
WWW.HOWCOLLEGE.AC.UK
08448 802 500





SUCCESS RATES

FOR ALL LEVELS.

THIS CAN BE CREDITED
TO OUR
PROFESSIONAL
STANDARD FACILITIES
AND INDUSTRY
EXPERTS
IN TEACHING
CULINARY SKILLS.



Diploma in Professional Cookery Level 3

Redditch RPCP-DP3-1617PR

Can you see yourself as the next Jamie Oliver or Nigella Lawson? Do you have what it takes to run your own restaurant? This one year, full-time course, will provide you with the opportunity to refine your cooking skills to a professional level; cooking a variety of complex dishes while learning how to effectively manage and develop working relationships within a kitchen environment. You will study modules in; Productive Working Relationships, Food Safety and Hygiene. You will also learn how to prepare complex dishes for service.

PROGRESSION: Successful completion of this course will allow you to continue onto a variety of hospitality and cookery courses in higher education. You can also choose to progress into employment into a supervisory role within hospitality and catering within a variety of locations including hotels, pubs, restaurants and holiday parks.

COURSE LENGTH: 1 YEAR



OPEN EVENTS

SAT 17TH OCT 11AM-2PM ALL CAMPUSES
THURS 26TH NOV 5PM-8PM REDDITCH CAMPUS
TUES 2ND FEB 5PM-8PM REDDITCH CAMPUS



APPLY HERE

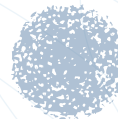
WWW.HOWCOLLEGE.AC.UK
08448 802 500





**PROGRESSION
RATES INTO THE
HOSPITALITY
AND CATERING
PROFESSION
ARE VERY HIGH,
LOCALLY AND
NATIONALLY**

16 FEB 06 E

MEXICO
ADF023

Diploma in Travel & Tourism Level 2

Redditch RTTR-DP2-1617PR
Worcester WTTR-DP2-1617PR

This intermediate course is a great first step into the world of travel and tourism. It mixes classroom-based learning with some great hands-on experience. Our course begins with an overview of the travel and tourism industry and you will learn about the different job roles available to you in this sector. You will also explore local visitor attractions and key destinations across the UK and Europe. Our supportive, knowledgeable team have extensive industry experience extending over Travel Retail, Overseas Resort Operation, Cabin Crew, Cruising, Conference and Event Organisation, Tourist Information Centre, Adventure Tourism and Hospitality roles.



OPEN EVENTS

SAT 17TH OCT 11AM-2PM ALL CAMPUSES
TUES 24TH NOV 5PM-8PM WORCESTER CAMPUS
THURS 26TH NOV 5PM-8PM REDDITCH CAMPUS
TUES 2ND FEB 5PM-8PM REDDITCH CAMPUS
THURS 4TH FEB 5PM-8PM WORCESTER CAMPUS



APPLY HERE

WWW.HOWCOLLEGE.AC.UK
08448 802 500

PROGRESSION: With GCSE English and maths, you can apply for our Diploma in Travel and Tourism, Level 3, followed by a Foundation Degree in Travel and Tourism Management. There will be many job opportunities open to you in this ever-expanding industry. You could work in a Travel Agency, become an Overseas Holiday Representative or train as a member of Air Cabin Crew. Or why not become a Tour Guide, Tourism Officer or work as a Children's Activity Worker on a Cruise liner? Whichever route you choose to follow, you will have the opportunity to travel all over the world, explore new cities and immerse yourself in some fascinating cultures.

COURSE LENGTH: 1 YEAR



Diploma in Travel & Tourism Level 3

Redditch RTTR-ED3-1618PR
Worcester WTTR-ED3-1618PR

Do you wonder what is involved in organising Glastonbury or the London Marathon? Have you ever thought about what it actually takes to co-ordinate other people's holidays? Would you like to have a career in the hospitality industry? If so our travel and tourism courses could be just the ticket for you. From organising conferences and events to learning how to resolve problems in an emergency situation, this course will help you to develop skills needed to succeed in this fast paced industry. The wide choice of careers in travel and tourism can be daunting. Luckily, we will introduce you to working in Human Resources, Ancillary Sales and Services or as a Tour Guide or Holiday Park Host. You will also learn how to run events, deal with emergencies and understand your employee rights. During the course, you will have the opportunity to visit a UK or European based holiday resort where you will gain first-hand experience of the running of the business and the products and services on offer. This will give you a good idea of the roles and responsibilities involved in different types of job.



PROGRESSION: After successfully completing your first year you will be able to progress on to an Advanced Diploma for your second year. You may then like to consider a Degree in Travel and Tourism Management. Alternatively you may wish to seek employment in tourism offices, airlines, hotels and resorts. Why not become an Event Organiser, Travel Agent or set up an independent travel business?

COURSE LENGTH: 1-2 YEARS



OPEN EVENTS

SAT 17TH OCT 11AM-2PM **ALL CAMPUSES**
TUES 24TH NOV 5PM-8PM **WORCESTER CAMPUS**
THURS 26TH NOV 5PM-8PM **REDDITCH CAMPUS**
TUES 2ND FEB 5PM-8PM **REDDITCH CAMPUS**
THURS 4TH FEB 5PM-8PM **WORCESTER CAMPUS**



APPLY HERE
WWW.HOWCOLLEGE.AC.UK
08448 802 500

92%
SUCCESS
RATES
FOR LEVEL 3
TRAVEL &
TOURISM



**AT THE
HEART
OF YOUR
TALENT**



**SPORTS AND
PUBLIC SERVICES**

WORCESTER CAMPUS

Deansway

Worcester,

WR1 2JF

01905 725555

REDDITCH CAMPUS

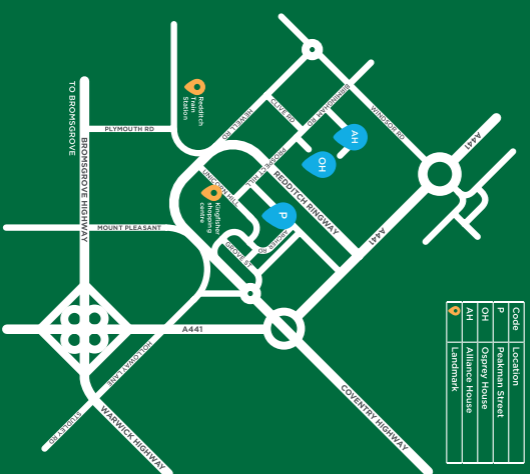
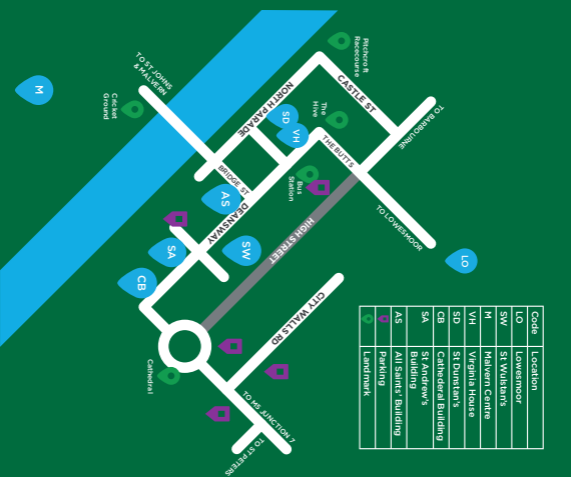
Peakman Street,

Redditch

B98 8DW

01527 572523

www.howcollege.ac.uk





SUBJECT AREA
SPORTS AND PUBLIC SERVICES

COURSE LENGTH
1 YEAR TO 2 YEARS



SUBJECT AREA
SPORTS AND PUBLIC SERVICES

LOCATIONS

REDDITCH

WORCESTER

OPEN EVENTS

SAT 17TH OCT 11AM-2PM ALL CAMPUSES

TUES 24TH NOV 5PM-8PM WORCESTER CAMPUS

THURS 26TH NOV 5PM-8PM REDDITCH CAMPUS

TUES 2ND FEB 5PM-8PM REDDITCH CAMPUS

THURS 4TH FEB 5PM-8PM WORCESTER CAMPUS

FUTURE POTENTIAL SALARY

RANGING FROM £10.99PH TO £18.07PH

JOBS IN WEST MIDLANDS

UPTO 11,750 COURSE DEPENDENT

COURSE LENGTH

1 YEAR TO 2 YEARS

LOCATIONS

REDDITCH

WORCESTER

JOBS IN WEST MIDLANDS

UPTO 11,750 COURSE DEPENDENT

BTEC Extended Certificate in Sports. Pathway to Football Academy Level 2

Redditch RSPT-CT2-1617PR
Worcester WSPT-CT2-1617PR

Our Extended Certificate in Sports, Level 2, gives you the opportunity to improve your sporting skills and knowledge. This hands-on course introduces you to a range of topics related to a wide range of careers in sports and leisure. The unit on Anatomy and Physiology introduces you to the structure of the human body and the workings of the skeletal, muscular, cardiovascular and respiratory systems. You will also investigate current issues affecting the sports industry and explore different methods of training for fitness. On top of all this, you will have the chance to participate in a wide variety of sports. This will improve your sporting technique and help you understand the rules, regulations and physical requirements of different activities. Alongside this students will continue to develop their English and maths skills and will be expected to undertake a minimum of 30 hours' work experience or voluntary work.

PROGRESSION: The skills of teamwork, leadership, decision making and resilience are transferable to many careers. Students who achieve the full Level 2 qualification at merit grade or above, plus a GCSE grade C in English and maths, may also progress to a Level 3 qualification such as the Extended Diploma in Sports, Level 3 (subject to a successful interview).

COURSE LENGTH: 1 YEAR

OPEN EVENTS

SAT 17TH OCT 11AM-2PM ALL CAMPUSES
TUES 24TH NOV 5PM-8PM WORCESTER CAMPUS
THURS 26TH NOV 5PM-8PM REDDITCH CAMPUS
TUES 2ND FEB 5PM-8PM REDDITCH CAMPUS
THURS 4TH FEB 5PM-8PM WORCESTER CAMPUS



APPLY HERE

WWW.HOWCOLLEGE.AC.UK
08448 802 500



BTEC Extended Diploma in Sports & Exercise Sciences Level 3

Redditch RSES-ED3-1618PR
Worcester WSES-ED3-1618PR

Do you have a scientific mind and a passion for sports? Are you thinking about a career as a Sports Therapist, Physiotherapist or Nutritionist? Then look no further, this is the course for you. Our exciting and interactive Extended Diploma in Sport & Exercise Science, Level 3, will improve your knowledge, increase your confidence and develop your skills ready for higher education or a great job in the industry. You will learn through a combination of practical activities and class-based learning in specialist facilities. Our course focuses on the main subject areas of Sports and Exercise Science, including modules in; Anatomy, Psychology, Nutrition, Sports Injuries and Sports Massage. How do our bodies react to exercise? How can specialist massage and the correct treatment for injuries extend or improve an athlete's performance? You will discover the answers to these and many more questions during your course. You will learn about the structure and function of the skeletal, muscular, cardiovascular and respiratory systems. You will also explore the mechanisms of fitness fatigue and recovery, and the importance of identifying, preventing and rehabilitating common sports injuries. In addition students will be required to undertake a minimum of 30 hours' work experience and/or voluntary work which will be supported with a well-developed work placement programme.



APPLY HERE
WWW.HOWCOLLEGE.AC.UK
08448 802 500

PROGRESSION: Sports and exercise science is a skilled discipline and with further education and training, you can choose from a range of exciting career options in the sports, leisure and education sectors. How about becoming a Sports Massage Therapist, Hospital Physiotherapist, Sports Journalist or PE Teacher? Before embarking on your dream career, you may want to consider a Degree in Sports Therapy, Nursing, Physiotherapy or Physical Education.

COURSE LENGTH: 2 YEARS



OPEN EVENTS

SAT 17TH OCT 11AM-2PM ALL CAMPUSES
TUES 24TH NOV 5PM-8PM WORCESTER CAMPUS
THURS 26TH NOV 5PM-8PM REDDITCH CAMPUS
TUES 2ND FEB 5PM-8PM REDDITCH CAMPUS
THURS 4TH FEB 5PM-8PM WORCESTER CAMPUS

60%
OF SPORT COACHING &
78%
OF SPORT & EXERCISE
SCIENCE STUDENTS
PROGRESS TO
UNIVERSITY

"Having only been competing in this sport for just over 18 months, I'm delighted that I've been crowned British Champion in my weight category, this was my first Equipped British Powerlifting Competition, the support from family, friends and work colleagues has been amazing"

Kelly Phasey

Previous Student
Qualified for the European
Powerlifting Championships



PHYSICAL

BTEC Extended Diploma in Sport Development, Coaching & Fitness Level 3

Redditch RSPT-ED3-1618PR
Worcester WSPD-ED3-1618PR

Do you dream of becoming a Sports Coach, Personal Trainer or Sports Performance Analyst? Are you passionate about sport and eager to learn new skills? Our Extended Diploma in Sport Development, Coaching and Fitness, Level 3, prepares you for a future in one of the UK's most successful industries. Our courses offer excellent progression to universities and promote strong links with local employers. Our courses are delivered by lecturers with years of elite industry experience in modern specialist sport environments. The main aim of our course is to develop your understanding and knowledge of the roles, responsibilities, skills and techniques involved in sports coaching and development. You will learn the importance of good nutrition and fitness testing, and take part in a wide variety of team and individual sporting activities that will allow you to demonstrate your practical skills. Your coaching skills will be enhanced through a well-developed external work placement programme where your 30 hours' of work experience or voluntary work will be evidenced.

PROGRESSION: After your course, you may consider moving onto our own higher education courses which will continue to develop your skills, qualities and knowledge at degree level. You could also choose to progress to university for a Degree in Sports Coaching, Sports Studies or PE Teacher. Alternatively, there are many exciting careers to choose from in the sports and leisure industry, with the option to continue to attain more qualifications through our extensive part-time course options.

COURSE LENGTH: 2 YEARS



OPEN EVENTS

SAT 17TH OCT 11AM-2PM ALL CAMPUSES
TUES 24TH NOV 5PM-8PM WORCESTER CAMPUS
THURS 26TH NOV 5PM-8PM REDDITCH CAMPUS
TUES 2ND FEB 5PM-8PM REDDITCH CAMPUS
THURS 4TH FEB 5PM-8PM WORCESTER CAMPUS



APPLY HERE

WWW.HOWCOLLEGE.AC.UK
08448 802 500



BTEC Extended Diploma in Sports Performance & Excellence, Football Academy Level 3

Worcester WSPT-ED3-1618PR

If you want to gain an academic qualification, whilst also training and playing competitive football, then this course is for you. You will follow in the footsteps of previous students who have excelled in the sport and have been offered the opportunity to play at professional/semi-professional levels. You will develop your confidence, independence and knowledge, studying modules in Sports Psychology, Sports Performance, Fitness Testing and Talent Identification while training 12 hours a week and competing for our Football Academy which is affiliated to the Association of Colleges' sports leagues and Worcester City Football Club. In the classroom you will study the principles of; Anatomy, Physiology and Psychology in Sport, The Physiology of Fitness, and The Importance of Sports Nutrition, Risk Assessment and Fitness Testing. In addition students will be required to undertake a minimum of 30 hours' work experience and/or voluntary work.

PROGRESSION: Successful completion of this course will allow you to continue onto our Foundation Degree (Football Academy) or progress to university for a Degree in Sports Studies or Sports Coaching. Alternatively, there are many exciting careers to choose from in the sports and leisure industry, with the option to continue to attain more qualifications through our extensive part-time course options.

COURSE LENGTH: 2 YEARS



OPEN EVENTS

SAT 17TH OCT 11AM-2PM ALL CAMPUSES
TUES 24TH NOV 5PM-8PM WORCESTER CAMPUS
THURS 4TH FEB 5PM-8PM WORCESTER CAMPUS



APPLY HERE

WWW.HOWCOLLEGE.AC.UK
08448 802 500



BTEC Extended Diploma in Sports Performance & Excellence, Futsal Academy Level 3

Redditch RSFU-ED3-1618PR

Would you like to join the fastest growing indoor sport with a reported 30 million players worldwide? Then our new Futsal Academy could have you passing like a pro under the guidance of our lecturing staff; an elite Cuban National Futsal Coach and an elite Woman Super League Footballer.

This programme will not only develop your academic knowledge on sport and careers, but also your professional and technical skills on the pitch too. You will work towards a BTEC Extended Diploma in Sport, Level 3, which is equivalent to 3 A-levels whilst playing in the NCA Futsal Super League. As part of the programme, you will spend four hours a week in Futsal training; working on your strength and conditioning, whilst also preparing for your next NCA Futsal Super League match-day.

Furthermore, the courses are taught using @Futsal's bespoke virtual learning platform, 'Inspire'; meaning you can work remotely from electronic devices; access a wide range of rich media content to assist with you modules; and receive live online assessment and feedback from your lecturers. You will also learn key employability skills and get some great career advice. In addition students will be required to undertake a minimum of 30 hours' work experience and/or voluntary work.

PROGRESSION: Successful completion of this course will allow you to continue to study on to our Higher National Diploma in Sports (Futsal Academy) or progress to university for a Degree In Sports Studies Or Sports Coaching. Alternatively, there are many exciting careers to choose from in the sports and leisure industry, with the option to continue to attain more qualifications through our extensive part-time course options.

COURSE LENGTH: 2 YEARS



OPEN EVENTS

SAT 17TH OCT 11AM-2PM ALL CAMPUSES
TUES 24TH NOV 5PM-8PM WORCESTER CAMPUS
THURS 26TH NOV 5PM-8PM REDDITCH CAMPUS
TUES 2ND FEB 5PM-8PM REDDITCH CAMPUS
THURS 4TH FEB 5PM-8PM WORCESTER CAMPUS



APPLY HERE
WWW.HOWCOLLEGE.AC.UK
08448 802 500



BTEC Extended Certificate in Public Services Level 2

Redditch RPSV-CT2-1617PR
Worcester WPSV-CT2-1617PR

The aim of the course is to prepare students for a career in a uniformed or non-uniformed public sector e.g. Police, Fire, Ambulance, Prison, Armed Forces, Customs & Excise, or Local Authority. This is also excellent preparation for progression to the Extended Diploma in Public Services, Level 3. The course relies heavily on the ethos and ethics of all public services; teamwork, leadership, commitment, self-discipline, dedication and reliability. As students are being prepared for a career in a disciplined service they will be expected to wear the specified uniform.

The programme of study is designed to give young people a realistic insight into the work of all these career paths. Students will study a variety of course specific topics these include; The Role and Work of the Public Services, Crime & its Effects on Society, Adventurous Activities, Health, Fitness and Lifestyle, and Preparing to Respond to Emergency Incidents. Alongside this students will continue to develop their English and maths skills and will be expected to undertake a minimum of 30 hours' work experience or voluntary work.

Students will learn through academic classroom based lessons, practical activities such as sports, role-plays and presentations and through outdoor activity residentials (hiking, camping and abseiling). The ability to carry out independent research, write/type up assignments in their own time, and meeting deadlines are crucial qualities for every student.

PROGRESSION: The skills gained will lead to many careers in all areas of military and emergency services both as civilian support staff or 'frontline' officers. The skills of problem-solving, teamwork, leadership, decision making and resilience are also transferable to many other careers. Successful completion of this course will allow you to progress to a Level 3 qualification such as the Extended Diploma in Public Services, Level 3 (subject to successful interview).

COURSE LENGTH: 1 YEAR



OPEN EVENTS

SAT 17TH OCT 11AM-2PM ALL CAMPUSES
TUES 24TH NOV 5PM-8PM WORCESTER CAMPUS
THURS 26TH NOV 5PM-8PM REDDITCH CAMPUS
TUES 2ND FEB 5PM-8PM REDDITCH CAMPUS
THURS 4TH FEB 5PM-8PM WORCESTER CAMPUS



APPLY HERE
WWW.HOWCOLLEGE.AC.UK
08448 802 500

BTEC Extended Diploma in Public Services Level 3

Redditch RPSV-ED3-1618PR
Worcester WPSV-ED3-1618PR

Do you have what it takes to join the uniformed public services? Are you focussed, dedicated and self-disciplined and looking for a way in to this fast paced and exciting industry? Then this course could be the perfect option for you.

Aiming to prepare you for a career in the uniformed public services or give progression to the Higher National Diploma in Public Services, this course relies heavily on the ethos and ethics of all public services; teamwork, leadership, commitment, self-discipline, dedication and reliability. As part of the course and in order to prepare you for a career in the uniformed service all students will be expected to wear a specified uniform.

A variety of topics are delivered over two years these include; Leadership and Teamwork, Citizenship, Fitness Testing and Training, Planning and Management of Major Incidents, Custodial Care, Impact of War & Terrorism and Adventurous Activities. In addition you will be required to undertake a minimum of 30 hours' work experience and/or voluntary work. You will learn through academic classroom based lessons which include lectures, student-led presentations, group discussions, and visiting speakers. Learning is also assessed through practical activities; sport and outdoor activities such as hiking, camping and abseiling. The ability to carry out independent research, write/type up assignments in their own time, and meeting deadlines are crucial qualities for every student.

Students will attend mandatory residential courses and visits to a wide range of public service establishments and organisations to meet practical and written assessment criteria.

PROGRESSION: The skills gained will lead to many careers in all areas of military, emergency services, prison service, customs and excise or UK Border Agency either as civilian support staff or 'frontline' officers. The skills of problem-solving, teamwork, leadership, decision making and resilience are also transferable to many other careers; court services, youth offending, nursing, outdoor education. Successful completion of this course will also allow you to progress either onto Higher National Diploma in Public Services at HoW College or to university to study in areas such as Criminology, Sociology, Forensic Psychology, Policing, Fire & Rescue Services, and Outdoor Education.

COURSE LENGTH: 2 YEARS



OPEN EVENTS

SAT 17TH OCT 11AM-2PM ALL CAMPUSES
TUES 24TH NOV 5PM-8PM WORCESTER CAMPUS
THURS 26TH NOV 5PM-8PM REDDITCH CAMPUS
TUES 2ND FEB 5PM-8PM REDDITCH CAMPUS
THURS 4TH FEB 5PM-8PM WORCESTER CAMPUS



APPLY HERE
WWW.HOWCOLLEGE.AC.UK
08448 802 500

**AT THE
HEART
OF YOUR
SKILLS**



**TRADE
PROFESSIONALS**



The map shows four campuses of How College: Malvern (orange), Bromsgrove (red), Redditch (green), and Worcester (yellow). A dashed white line runs horizontally across the map, separating the Malvern/Bromsgrove area from the Redditch/Worcester area. The Worcester campus is located to the west of the Redditch campus.

MALVERN CAMPUS

Spring Lane,
Malvern,
Worcestershire, WR14 1BY
01905 725526

REDDITCH CAMPUS

Peakman Street,
Redditch
B98 8DW
01527 572523

www.howcollege.ac.uk

BROMSGROVE CAMPUS

Slideshow Drive,
Bromsgrove,
B60 1PQ
01527 570020

WORCESTER CAMPUS

Deansway, Worcester,
WR1 2JF
01905 725555

www.howcollege.ac.uk



SUBJECT AREA
TRADE PROFESSIONALS



COURSE LENGTH
1 YEAR TO 2 YEARS



LOCATIONS

REDDITCH

WORCESTER

BROMSGROVE

OPEN EVENTS

SAT 17TH OCT 11AM-2PM ALL CAMPUSES

TUES 24TH NOV 5PM-8PM WORCESTER CAMPUS

THURS 26TH NOV 5PM-8PM REDDITCH & BROMSGROVE CAMPUS

TUES 2ND FEB 5PM-8PM REDDITCH & BROMSGROVE CAMPUS

THURS 4TH FEB 5PM-8PM WORCESTER CAMPUS

FUTURE POTENTIAL SALARY

RANGING FROM £10.44PH TO £18.25PH

JOBS IN WEST MIDLANDS

UPTO 20,857 COURSE DEPENDENT

SUBJECT AREA
TRADE PROFESSIONALS



COURSE LENGTH

1 YEAR TO 2 YEARS

LOCATIONS

REDDITCH

WORCESTER

BROMSGROVE

JOBS IN WEST MIDLANDS

UPTO 20,857 COURSE DEPENDENT

Employability Skills for Construction Level 1

Redditch RCON-DP1-1617PR
Malvern WPEC-CT1-1617PR

Thinking about a career in construction but not sure where to start? Looking to learn a trade and not sure which direction to take? Then this is the course for you. The Skills for Employment, Level 1 will introduce you to a number of trades, from Carpentry and Joinery to Brickwork and Painting & Decorating. You will try your hand at a range of techniques and form a strong basis of skills and knowledge that can be used to help you go onto further education or employment in your chosen industry.

PROGRESSION: If you want to build on your skills and experience you may wish to progress onto a Level 1 Diploma in your chosen area. There are many career paths to choose from in the construction industry, where skills in carpentry, brickwork or painting & decorating will prove useful.

COURSE LENGTH: 1 YEAR



OPEN EVENTS

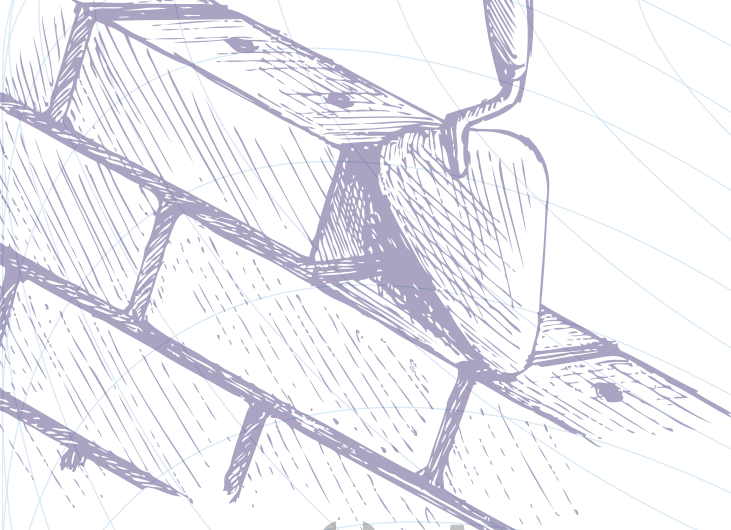
SAT 17TH OCT 11AM-2PM **ALL CAMPUSES**
TUES 24TH NOV 5PM-8PM **WORCESTER CAMPUS**
THURS 26TH NOV 5PM-8PM **REDDITCH CAMPUS**
TUES 2ND FEB 5PM-8PM **REDDITCH CAMPUS**
THURS 4TH FEB 5PM-8PM **WORCESTER CAMPUS**



APPLY HERE
WWW.HOWCOLLEGE.AC.UK
08448 802 500



**SUCCESS
RATES IN OUR
CONSTRUCTION COURSES
ARE CONSISTENTLY ABOVE
THE NATIONAL AVERAGE**



COMPETITIONS

CONSTRUCTION STUDENTS ARE ANNUALLY ENTERED INTO REGIONAL SKILLS COMPETITIONS. WE'VE HAD GREAT SUCCESS AND OFTEN OUR STUDENTS QUALIFY FOR NATIONAL COMPETITIONS



IN 2015 ONE OF OUR BRICKLAYING STUDENTS WON THE REGIONAL BRICKLAYING COMPETITION IN SOUTH AND CITY COLLEGE, BIRMINGHAM



Diploma in Bricklaying Level 1

Redditch RBRK-DP1-1617PR
Malvern WBRK-DP1-1617PR

Would you like to work in construction? Do you enjoy working with your hands and studying at your own pace? If the answer is yes then this is the qualification for you. Our course will introduce you to brickwork and help you develop the basic skills and techniques you need to become a Bricklayer. You will learn about both theory and the practice of bricklaying. You will gain the vital skills needed to become a Bricklayer, starting with basic techniques such as rolling and spreading of mortar, buttering and the cutting of basic brick shapes. You will work through a practical workbook and carry out a range of brickwork and blockwork tasks that are similar to the activities that you will carry out on the job. You will also learn about health and safety regulations and how to stay safe on a building site. You will look at working drawings and learn how to recognise how different buildings are created. You will also learn about plan views, elevations and sectional drawings. By the end of the course, you will be able to identify different types of foundation, sections of cavity and the various bonding patterns used in brickwork.

PROGRESSION: With your Diploma in Bricklaying, Level 1, you will be ready to apply for our Level 2 course. If you want to earn while you learn, you could choose to study for a Level 2 qualification while working as an apprentice bricklayer.

There will be a number of roles open to you in the construction industry, such as Site Engineer, Building Surveyor or Bricklaying Foreman. How about running your own site as a Site Agent? Or being responsible for the quality of workmanship as a Clerk of the Works? Your Diploma in Brickwork can help you achieve these and many more jobs in construction.

COURSE LENGTH: 1 YEAR



OPEN EVENTS

SAT 17TH OCT 11AM-2PM ALL CAMPUSES
TUES 24TH NOV 5PM-8PM WORCESTER CAMPUS
THURS 26TH NOV 5PM-8PM REDDITCH CAMPUS
TUES 2ND FEB 5PM-8PM REDDITCH CAMPUS
THURS 4TH FEB 5PM-8PM WORCESTER CAMPUS



APPLY HERE
WWW.HOWCOLLEGE.AC.UK
08448 802 500

Diploma in Bricklaying Level 2

Redditch RBRK-DP2-1617PR
Malvern WBRK-DP2-1617PR

Would you like to develop your skills as a craftsman? Interpret working drawings? And become a fully qualified Bricklayer? The Diploma in Brickwork, Level 2, is an ideal progression from our Diploma in Brickwork, Level 1. The Level 2 qualification builds on the knowledge and key skills that you have already developed in the Level 1. It offers you a deeper insight into the craft of bricklaying and will give you all the skills you need to become fully qualified and ready to enter the world of paid employment.

The course balances theory with great hands-on experience. You will learn how to build solid walling, cavity walling and isolated and attached piers. You will look at a variety of other building methods and construction techniques in much more detail. You will also learn and apply safe working practices, and begin to interpret working drawings for masonry structures.

PROGRESSION: Your Diploma in Bricklaying, Level 2, is a great base for you to move on to our Level 3 qualification in the same subject. The course will give you a solid understanding of general construction work and is useful for progression into any area of the industry.

COURSE LENGTH: 1 YEAR



OPEN EVENTS

SAT 17TH OCT 11AM-2PM ALL CAMPUSES
TUES 24TH NOV 5PM-8PM WORCESTER CAMPUS
THURS 26TH NOV 5PM-8PM REDDITCH CAMPUS
TUES 2ND FEB 5PM-8PM REDDITCH CAMPUS
THURS 4TH FEB 5PM-8PM WORCESTER CAMPUS



APPLY HERE
WWW.HOWCOLLEGE.AC.UK
08448 802 500



Diploma in Bricklaying Level 3

Redditch RBRK-DP3-1617PR
Worcester WBRK-DP3-1617PR

Are you ready to take your skills in brickwork to an advanced level? Would you like to be a highly skilled Bricklayer? Learn how to build full sized decorative axed arches? Our Diploma in Brickwork, Level 3, is a natural step up from your Level 2 qualification and equips you with the specialised knowledge and experience you need to qualify as a highly skilled bricklayer. From building a full sized decorative axed arch, to detailed decorative panels, you will explore a range of new techniques that will allow you to demonstrate your expertise and creativity. You will be taught through a variety of methods, including lectures, tutorials, directed study and practical sessions. You will learn a range of new brickwork techniques, including how to erect, repair and maintain complex masonry structures.

PROGRESSION: Your Diploma in Bricklaying, Level 3, will give you an advantage in a highly competitive and ever changing labour market. It will qualify you to seek immediate work in an apprentice or trainee role, which could progress to a permanent position as a Bricklayer or a Site Agent.

COURSE LENGTH: 1 YEAR

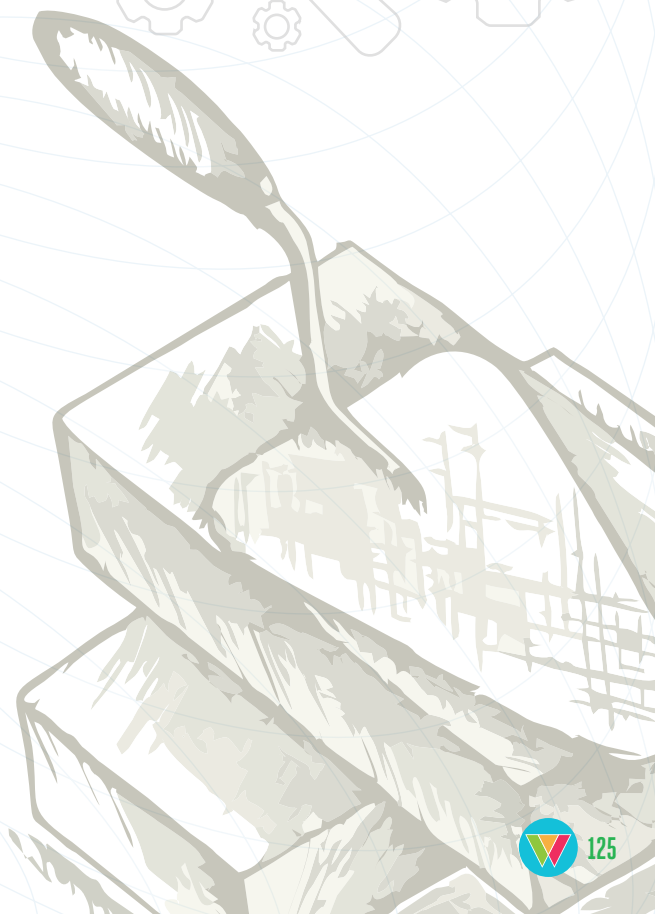
OPEN EVENTS



SAT 17TH OCT 11AM-2PM ALL CAMPUSES
TUES 24TH NOV 5PM-8PM WORCESTER CAMPUS
THURS 26TH NOV 5PM-8PM REDDITCH CAMPUS
TUES 2ND FEB 5PM-8PM REDDITCH CAMPUS
THURS 4TH FEB 5PM-8PM WORCESTER CAMPUS



APPLY HERE
WWW.HOWCOLLEGE.AC.UK
08448 802 500





**IN 2015 ONE OF
OUR CARPENTRY
STUDENTS WON THE
REGIONAL CARPENTRY
COMPETITION IN SOUTH
AND CITY COLLEGE,
BIRMINGHAM**

**IN CONSTRUCTION
WE HAVE
EXCELLENT
PARTNERSHIPS
WITH LOCAL
EMPLOYERS
SUCH AS FORTIS
HOUSING AND
SPELLER
METCALFE.**



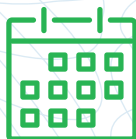
Diploma in Carpentry & Joinery Level 1

Redditch RCPJ-DP1-1617PR
Malvern WCPJ-DP1-1617PR

Have you always wondered how things are made from wood? Would you like to create furniture? If so, this course can introduce you to site carpentry or bench joinery. The course balances theory with hands-on experience to help you develop a basic knowledge of carpentry and joinery. You will learn how to carry out first and second fixing procedures, how to erect structural carcassing and how to operate a variety of power tools. You will cover a number of modules including; Health and Safety, Moving and Handling Materials, Communication Skills and The Calculation of Different Quantities.

PROGRESSION: Successful completion of this course will allow you to progress onto either a Diploma in Site Carpentry, Level 2, or a Diploma in Bench Joinery, Level 2.

COURSE LENGTH: 1 YEAR



OPEN EVENTS

SAT 17TH OCT 11AM-2PM ALL CAMPUSES
TUES 24TH NOV 5PM-8PM WORCESTER CAMPUS
THURS 26TH NOV 5PM-8PM REDDITCH CAMPUS
TUES 2ND FEB 5PM-8PM REDDITCH CAMPUS
THURS 4TH FEB 5PM-8PM WORCESTER CAMPUS



APPLY HERE

WWW.HOWCOLLEGE.AC.UK
08448 802 500



Diploma in Site Carpentry Level 2

Redditch RSCP-DP2-1617PR
Malvern WSCP-DP2-1617PR

Do you want to improve your employability opportunities in carpentry? Would you like to specialise in site carpentry? This intermediate course is the next step you need to take towards employment in carpentry. In our purpose-built, industry standard construction facility, you will have the opportunity to develop your skills in site carpentry with practical modules in Construction Technology and Structural Carcassing. You will also complete knowledge based modules in Site Safety and Communication. These skills will enable you to progress further with the carpentry trade.

PROGRESSION: Successful completion of this course will allow you to progress onto the Diploma in Site Carpentry, Level 3. Alternatively you could progress into employment in the industry or a Level 2 apprenticeship or NVQ.

COURSE LENGTH: 1 YEAR



OPEN EVENTS

SAT 17TH OCT 11AM-2PM ALL CAMPUSES
TUES 24TH NOV 5PM-8PM WORCESTER CAMPUS
THURS 26TH NOV 5PM-8PM REDDITCH CAMPUS
TUES 2ND FEB 5PM-8PM REDDITCH CAMPUS
THURS 4TH FEB 5PM-8PM WORCESTER CAMPUS



APPLY HERE
WWW.HOWCOLLEGE.AC.UK
08448 802 500



Diploma in Bench Joinery Level 2

Redditch RBJN-DP2-1617PR
Malvern WBJN-DP2-1617PR

Are you looking for a hands-on job? Our specialist course in bench joinery provides students with the knowledge and skills to progress in to a rewarding career in the wood occupation industry.

Throughout the course you will gain real working experience in a variety of areas from preparation and use of joinery power tools to manufacturing joinery products such as windows, doors and staircase.

You will hone your craft in well-equipped workshops and learn the essential safe working practices and the health and safety regulations applicable to your industry.

PROGRESSION: Upon successful completion of this course you can continue onto our Diploma in Bench Joinery, Level 3. You can also pursue employment in the carpentry industry or work-based training.

COURSE LENGTH: 1 YEAR



OPEN EVENTS

SAT 17TH OCT 11AM-2PM ALL CAMPUSES
TUES 24TH NOV 5PM-8PM WORCESTER CAMPUS
THURS 26TH NOV 5PM-8PM REDDITCH CAMPUS
TUES 2ND FEB 5PM-8PM REDDITCH CAMPUS
THURS 4TH FEB 5PM-8PM WORCESTER CAMPUS



APPLY HERE
WWW.HOWCOLLEGE.AC.UK
08448 802 500



Diploma in Site Carpentry Level 3

Redditch RSCP-DP3-1617PR
Malvern WSCP-DP3-1617PR

Do you dream of becoming a highly skilled carpenter or setting up your own business? If the answer is yes, then this is the course for you. Our Diploma in Site Carpentry, Level 3, will introduce you to a range of advanced carpentry techniques that allow you to carry out exciting new projects that will prepare you for a great career in the industry.

Our course will develop your practical skills and widen your knowledge of construction theory. You will learn about curved stud work, complex roofing such as hips and valleys and also learn how to use woodworking machines such as a spindle moulder and cross cut saw. You will also be involved in using drawings, job sheets, plans and geometric techniques to complete your work. Other modules include; Workplace Safety, Cost Efficiency, Environmental Issues, Construction Industry Regulations and Safe Working Practices.

PROGRESSION: Once you have successfully completed this course you can continue onto a HNC in Construction. You will also have the opportunity to progress into employment or, through combining this qualification with a Level 3 NVQ, an advanced apprenticeship.

COURSE LENGTH: 1 YEAR



OPEN EVENTS

SAT 17TH OCT 11AM-2PM ALL CAMPUSES
TUES 24TH NOV 5PM-8PM WORCESTER CAMPUS
THURS 26TH NOV 5PM-8PM REDDITCH CAMPUS
TUES 2ND FEB 5PM-8PM REDDITCH CAMPUS
THURS 4TH FEB 5PM-8PM WORCESTER CAMPUS



APPLY HERE
WWW.HOWCOLLEGE.AC.UK
08448 802 500



Diploma in Bench Joinery Level 3

Redditch RBJN-DP3-1617PR
Malvern WBJN-DP3-1617PR

Are you ready to take your final step towards employment in bench joinery? This advanced course offers you the opportunity to fully develop your skillset. You will study complex joinery products and construction technologies in a practical working environment, enabling you to gain valuable real work experience before you progress onto your next step.

PROGRESSION: Once you have successfully completed the course you can continue onto a HNC in Construction. You will also have the opportunity to progress into employment or, through combining this qualification with a Level 3 NVQ, an advanced apprenticeship.

COURSE LENGTH: 1 YEAR

OPEN EVENTS



SAT 17TH OCT 11AM-2PM ALL CAMPUSES
TUES 24TH NOV 5PM-8PM WORCESTER CAMPUS
THURS 26TH NOV 5PM-8PM REDDITCH CAMPUS
TUES 2ND FEB 5PM-8PM REDDITCH CAMPUS
THURS 4TH FEB 5PM-8PM WORCESTER CAMPUS



APPLY HERE
WWW.HOWCOLLEGE.AC.UK
08448 802 500

IN CONSTRUCTION,
WE HAVE WORK
EXPERIENCE
PROGRAMMES WITH
REDDITCH BOROUGH
COUNCIL, AVONCROFT
MUSEUM, CROOME
PARK AND SPELLER
METCALFE



Diploma in Plastering Level 1

Redditch RPLS-DP1-1617PR

Are you practical and hands-on? Would you like to learn a new trade? This course is the perfect introduction into the plastering trade, allowing you to gain the fundamental skills needed to progress into employment. You will learn the basics of surface preparation and internal plaster application along with producing plaster components from moulds.

PROGRESSION: Successful completion of this course will allow you to continue onto our Diploma in Plastering, Level 2. You can also progress into employment or work-based training opportunities.

COURSE LENGTH: 1 YEAR



OPEN EVENTS

SAT 17TH OCT 11AM-2PM ALL CAMPUSES
THURS 26TH NOV 5PM-8PM REDDITCH CAMPUS
TUES 2ND FEB 5PM-8PM REDDITCH CAMPUS



APPLY HERE

WWW.HOWCOLLEGE.AC.UK
08448 802 500



Diploma in Plastering Level 2

Redditch RPLS-DP2-1617PR

Do you want to improve your plastering skills and industry knowledge? Are you ready to make another step towards employment? This course gives you the opportunity to build upon your skillset and develop your knowledge in plastering. You will be given guidance on workplace communication, intermediate building methods and a variety of construction technologies, gaining hands-on workplace experience in our purpose built construction facility.

PROGRESSION: Successful completion of this course will allow you to continue onto a Extended Diploma in Construction, Level 3. Alternatively you can progress into employment or work-based training opportunities.

COURSE LENGTH: 1 YEAR



OPEN EVENTS

SAT 17TH OCT 11AM-2PM ALL CAMPUSES
THURS 26TH NOV 5PM-8PM REDDITCH CAMPUS
TUES 2ND FEB 5PM-8PM REDDITCH CAMPUS



APPLY HERE

WWW.HOWCOLLEGE.AC.UK
08448 802 500



IN 2015 ONE OF
OUR PAINTING &
DECORATING STUDENTS
CAME SECOND IN THE
REGIONAL PAINTING
AND DECORATING
COMPETITION AT SOUTH
AND CITY COLLEGE,
BIRMINGHAM



Diploma in Painting & Decorating Level 1

Malvern WPAD-DP1-1617PR

Are you practical and creative? Do you enjoy working on projects and seeing the results of your hard work? If the answer is yes, then your perfect career in construction could be as a Painter and Decorator. Our Level 1 Diploma will introduce you to this specialist craft and help you gain the skills and knowledge you need to start work or progress to further training. Our course balances theory with some great hands-on experience. You will learn the vital skills you need to become a Painter and Decorator, starting with basic techniques such as; preparing surfaces for decorating, organising your work area, applying wallpaper and using brushes and rollers to apply paint. You will also explore different paint finishes and learn how to produce special decorative finishes. In addition to your practical training, you will also learn how to select different quantities of materials, how to communicate with other professionals, and how to identify different building materials and explain how they are used. Our course also covers aspects of health and safety.

PROGRESSION: After completing the course, you may want to consider taking our Diploma in Painting & Decorating, Level 2. Alternatively, you may want to think about undertaking an apprenticeship or further on-the-job training.

COURSE LENGTH: 1 YEAR



APPLY HERE
WWW.HOWCOLLEGE.AC.UK
08448 802 500



OPEN EVENTS
SAT 17TH OCT 11AM-2PM **ALL CAMPUSES**
TUES 24TH NOV 5PM-8PM **WORCESTER CAMPUS**
THURS 4TH FEB 5PM-8PM **WORCESTER CAMPUS**



Diploma in Painting & Decorating Level 2

Malvern WPAD-DP2-1617PR

The Level 2 in Painting & Decorating is an ideal progression from the Diploma in Painting & Decorating, Level 1 and offers you the training and experience to become a fully qualified tradesperson. From sanding down paintwork and stripping old wallpaper to installing ceiling mouldings you will learn how to carry out a range of advanced techniques and skills. Wallpapering, broken colour effects, textured finishes and using spraying guns are just a few examples of the skills you will develop. By the end of the course you will also be able to erect, dismantle and clean a range of equipment and working platforms. You will be skilled in identifying different hazards, and will understand how to measure and calculate different quantities and materials.

PROGRESSION: If you wish to develop your skills even further, you may want to consider a Diploma in Painting and Decorating, Level 3 or an apprenticeship in construction. As you gain more experience, you may want to become self-employed or train towards a supervisory or managerial position.

COURSE LENGTH: 1 YEAR



APPLY HERE

WWW.HOWCOLLEGE.AC.UK
08448 802 500



OPEN EVENTS

SAT 17TH OCT 11AM-2PM ALL CAMPUSES
TUES 24TH NOV 5PM-8PM WORCESTER CAMPUS
THURS 4TH FEB 5PM-8PM WORCESTER CAMPUS



Diploma in Plumbing & Heating Level 1

Worcester WPMB-DP1-1617PR
Redditch RPMB-DP1-1617PR

Would you like to become a highly skilled tradesman? Learn new technologies in an ever changing industry? If yes, this is the course for you. This qualification is designed to introduce you to the core skills needed for a career in the plumbing and heating industry.

From installing sanitation systems and servicing boilers to laying underground drainage pipes, plumbing is a highly skilled field. There's more to it than fixing a dripping tap! This vocational course provides you with hands on experience and knowledge of plumbing installation, repair and maintenance as well as introducing you to the wide range of materials, new technologies and industry know-how you need to succeed in this sector.

PROGRESSION: Successful completion of this course will allow you to progress onto our Diploma in Plumbing and Heating, Level 2.

COURSE LENGTH: 1 YEAR



OPEN EVENTS

SAT 17TH OCT 11AM-2PM ALL CAMPUSES
TUES 24TH NOV 5PM-8PM WORCESTER CAMPUS
THURS 26TH NOV 5PM-8PM REDDITCH CAMPUS
TUES 2ND FEB 5PM-8PM REDDITCH CAMPUS
THURS 4TH FEB 5PM-8PM WORCESTER CAMPUS



APPLY HERE
WWW.HOWCOLLEGE.AC.UK
08448 802 500



Diploma in Plumbing and Heating Level 2

Worcester WPHV-DP2-1617PR

Are you looking for a varied and rewarding career in construction? Have you thought about becoming a Plumber or Heating Engineer? From installing heating systems and servicing boilers to laying underground drainage pipes, this is a highly skilled and varied field. With our Diploma in Plumbing, Level 2, you will learn all about maintenance, repair and installation, and gain the skills and knowledge you need to move on to a higher level course.

Our course balances theory with some great hands-on experience. You will learn about the installation of domestic heating and rainwater systems, bathroom suites, immersion heaters, hot water cylinders and cold-water cisterns. You will also learn how to install and maintain a variety of taps, radiator valves and central heating controls. By the end of the course, you will understand a range of fault finding and repair techniques, and be aware of safe working practices in the building studies environment.

PROGRESSION: Successful completion of this course will allow you to progress onto our Diploma in Plumbing and Heating, Level 3. Alternatively you can seek employment in a range of roles including Plumber, Heating Engineer or Gas Engineer. With further education you can also pursue a career in installation of renewable technology.

COURSE LENGTH: 1 YEAR



APPLY HERE
WWW.HOWCOLLEGE.AC.UK
08448 802 500



OPEN EVENTS

SAT 17TH OCT 11AM-2PM ALL CAMPUSES
TUES 24TH NOV 5PM-8PM WORCESTER CAMPUS
THURS 4TH FEB 5PM-8PM WORCESTER CAMPUS



88%

of Level 2 Diploma
in Engineering
students have
progressed onto
another college
course.



Diploma in Engineering Level 2

Bromsgrove BENG-DP2-1617PR
Worcester WENG-DP2-1617PR

Do you often find yourself dismantling objects then putting them back together to see how they work? Are you a natural problem solver who enjoys hands-on learning? If the answer is yes, then engineering could be your perfect career. You will learn how to work safely and effectively, how to interpret engineering information such as orthographic drawings and how to use maths to solve different engineering problems. You will also study a unit on Electrical and Mechanical Science. By the end of the course, you will have developed a sound understanding of different mechanical and electrical components and will be able to identify the properties and characteristics of a range of materials.

PROGRESSION: You may like to continue to a higher-level qualification such as a Certificate in Engineering, Level 3 or our Extended Diploma in Engineering, Level 3. After further training, you can choose to specialise in mechanical, manufacturing, marine, aerospace or structural engineering.

COURSE LENGTH: 1 YEAR

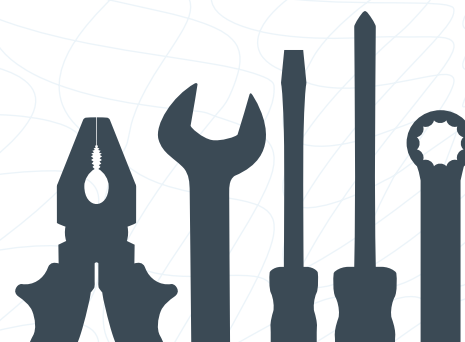


OPEN EVENTS

SAT 17TH OCT 11AM-2PM ALL CAMPUSES
TUES 24TH NOV 5PM-8PM WORCESTER CAMPUS
THURS 26TH NOV 5PM-8PM BROMSGROVE CAMPUS
TUES 2ND FEB 5PM-8PM BROMSGROVE CAMPUS
THURS 4TH FEB 5PM-8PM WORCESTER CAMPUS



APPLY HERE
WWW.HOWCOLLEGE.AC.UK
08448 802 500



JACK DENNEHY

ENGINEERING APPRENTICE

has secured a prestigious apprenticeship with Southco.

Extended Diploma in Engineering Level 3

Bromsgrove BENG-ED3-1618PR
Worcester WENG-ED3-1618PR

Are you thinking about going to university to study engineering? Then look no further. Our Extended Diploma in Engineering, Level 3, will equip you with the technical knowledge you need to progress to higher education or begin work at technician level. Our theoretical and work-related course enables you to demonstrate your skills through a range of hands-on projects and assignments. Most of your learning will be classroom-based, helping you prepare for higher-level engineering qualifications. You will learn about the effects of engineering on the environment and the financial and legal constraints within which an engineering company operates. Other modules include; Mechanical Principles and Applications, Electronic Devices, Engineering Materials, Health and Safety in the Workplace and Primary Forming Processes.

PROGRESSION: You can use your Extended Diploma in Engineering, Level 3, to progress to one of our undergraduate courses such as a HNC/ HND in Manufacturing or Mechanical Engineering, or Electrical and Electronic Engineering. You can choose to work in a range of roles, including quality assurance or computer aided design.

COURSE LENGTH: 2 YEARS



OPEN EVENTS

SAT 17TH OCT 11AM-2PM **ALL CAMPUSES**
TUES 24TH NOV 5PM-8PM **WORCESTER CAMPUS**
THURS 26TH NOV 5PM-8PM **BROMSGROVE CAMPUS**
TUES 2ND FEB 5PM-8PM **BROMSGROVE CAMPUS**
THURS 4TH FEB 5PM-8PM **WORCESTER CAMPUS**



APPLY HERE

WWW.HOWCOLLEGE.AC.UK
08448 802 500

100%

progression from
the **Subsidiary
Diploma in
Engineering onto
the Extended
Diploma in
Engineering.**

Diploma in Electrical Installation Level 1

Bromsgrove BELI-DP1-1617PR

Are you a natural problem solver who likes fixing things? Our Diploma in Electrical Installation, Level 1, is a tried and tested route into working in electrical engineering and offers the perfect introduction to this exciting industry. Whether you are thinking of completing an apprenticeship, or already working as an engineer and looking to gain a qualification, our course will provide you with the practical skills, knowledge and training you need to develop a career as an Electrician.

PROGRESSION: Successful completion of this course will allow you to progress onto our Diploma in Electrical Installation, Level 2.

COURSE LENGTH: 1 YEAR



OPEN EVENTS

SAT 17TH OCT 11AM-2PM ALL CAMPUSES
THURS 26TH NOV 5PM-8PM BROMSGROVE CAMPUS
TUES 2ND FEB 5PM-8PM BROMSGROVE CAMPUS



APPLY HERE
WWW.HOWCOLLEGE.AC.UK
08448 802 500



Diploma in Electrical Installation Level 2

Worcester WELI-DP2-1617PR

Are you interested in a career as an electrician? Are you practically minded and enjoy solving problems? If so, then our Diploma in Electrical Installation, Level 2, could be the perfect course for you. At our on-site electrical workshops, you will learn how to carry out a range of electrical installation tasks using measuring instruments and hand tools. You will also learn about the theory of electrical principles. You will develop an in-depth knowledge of different wiring regulations and the science behind electrical topics such as electromagnetism, electric motors, alternators and other devices.

You will also learn about different types of lighting, AC theory, cable sizing and testing. During the course, you will have the opportunity to learn about health and safety requirements, develop your IT and functional skills and get involved in a range of teambuilding activities.

PROGRESSION: Upon successful completion of this course you can then progress onto a Diploma in Electrical Installation, Level 3. You may also have the opportunity to progress onto an apprenticeship or employment within the electrical installation industry.

COURSE LENGTH: 1 YEAR



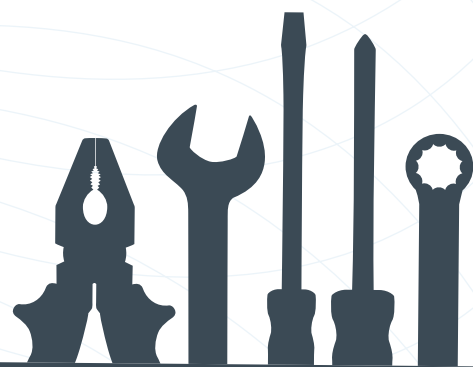
OPEN EVENTS

SAT 17TH OCT 11AM-2PM ALL CAMPUSES
TUES 24TH NOV 5PM-8PM WORCESTER CAMPUS
THURS 4TH FEB 5PM-8PM WORCESTER CAMPUS



APPLY HERE

WWW.HOWCOLLEGE.AC.UK
08448 802 500



**ANTHONY
YOUNG**

PREVIOUS ELECTRICAL STUDENT

has secured
employment
with Grinlec.

Diploma in Electrical Installation Level 3

Worcester WELI-DP2-1617PR

You may have recently achieved a Level 2 qualification or already be working in the industry and looking to gain a qualification. Either way, you will have a good understanding of basic electrical principles and be ready to take your skills to the next level. With a Diploma in Electrical Installation, Level 3, you will gain the advanced knowledge and training you need to work successfully and independently as an Electrician.

You will learn about the underlying principles of electrotechnology and study a range of modules, such as Electrical Science, Installation, Inspection, Testing, Fault Diagnosis, Fault-Finding and Repair. During the course, you will have the opportunity to learn about health and safety requirements, develop your IT and functional skills and get involved in a range of teambuilding activities.



OPEN EVENTS

SAT 17TH OCT 11AM-2PM ALL CAMPUSES
TUES 24TH NOV 5PM-8PM WORCESTER CAMPUS
THURS 4TH FEB 5PM-8PM WORCESTER CAMPUS



APPLY HERE

WWW.HOWCOLLEGE.AC.UK
08448 802 500

PROGRESSION: After successfully completing your course, you may want to progress to an apprenticeship, where you will gain the onsite experience to become a fully qualified electrician. Further courses would be Inspection and Testing or Wiring Regulations. In addition you can progress to our HNC or HND in Electrical Engineering or, if you are employed, a Foundation Degree in Electrical Systems and Installation or Electronic Systems and Control. With a qualification in electrotechnology, you can choose to become an Installations or Contracting Electrician, Power Engineer, Technical Sales Engineer or even an Armed Forces Technical Officer!

COURSE LENGTH: 1 YEAR

Diploma in Light Vehicle Maintenance Level 1

Bromsgrove BLVM-DP1-1617PR
Worcester WLVM-DP1-1617PR

Are you passionate about cars and engines? Do you like working with your hands and making things? Whether you are thinking of working in a repair garage or dream of running your own workshop, our Diploma in Light Vehicle Maintenance, Level 1, will introduce you to the automotive industry and provide you with the skills and training you need to develop a great career in the field. Our hands-on course introduces you to the world of vehicle service and repair. You will learn a range of different procedures for working on cars, vans and light vehicles in our specialist workshop, which offers all the tools and equipment you would find in a professional dealership. In addition to actually working on cars, you will learn the theory you need to support your skills. You will learn all about the workings of engines, gearboxes, suspension, brakes and electrical systems.

PROGRESSION: If you are serious about a career in automotive engineering, then you will want to stay on at the College and study one of our Level 2 automotive courses.

COURSE LENGTH: 1 YEAR



APPLY HERE
WWW.HOWCOLLEGE.AC.UK
08448 802 500



OPEN EVENTS

SAT 17TH OCT 11AM-2PM ALL CAMPUSES
TUES 24TH NOV 5PM-8PM WORCESTER CAMPUS
THURS 26TH NOV 5PM-8PM BROMSGROVE CAMPUS
TUES 2ND FEB 5PM-8PM BROMSGROVE CAMPUS
THURS 4TH FEB 5PM-8PM WORCESTER CAMPUS



Перекрытие клапанов

47°

37°

Впуск

Выпуск

5



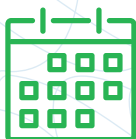
Diploma in Light Vehicle Maintenance & Repair Level 2

Bromsgrove BLVM-SD2-1617PR
Worcester WLVM-DP2-1617PR

Have you recently completed your Diploma in Vehicle Maintenance and Repair, Level 1? Maybe you have prior experience in the industry and are looking for a qualification? Whether you have experience in light vehicle repair or simply love cars, our Level 2 Diploma offers the essential skills you need to take your training to the next level. Our course is a recognised entry requirement for working as a Service Technician, so you can start working in a garage, dealership or maintenance depot the minute you finish your last assignment. Our course balances theory with some great hands-on experience. By working on real vehicles in our workshop, you will build your knowledge of key vehicle systems and begin to develop simple diagnosis and maintenance skills. You will learn how to remove and repair engines, electrical auxiliary units, vehicle chassis units and a range of other components. You will also gain a working knowledge of health and safety procedures, and develop important communication and functional skills that will help you when ordering systems, job sheets and technical resources.

PROGRESSION: Upon successful completion of this course you could progress onto a Diploma in Light Vehicle Maintenance, Level 3. You may also choose to progress onto a work-based training programme or employment as an improver or full automotive apprenticeship.

COURSE LENGTH: 1 YEAR



OPEN EVENTS

SAT 17TH OCT 11AM-2PM ALL CAMPUSES
TUES 24TH NOV 5PM-8PM WORCESTER CAMPUS
THURS 26TH NOV 5PM-8PM BROMSGROVE CAMPUS
TUES 2ND FEB 5PM-8PM BROMSGROVE CAMPUS
THURS 4TH FEB 5PM-8PM WORCESTER CAMPUS



APPLY HERE

WWW.HOWCOLLEGE.AC.UK
08448 802 500



Diploma in Light Vehicle Maintenance & Repair Level 3

Bromsgrove BLVM-DP3-1617PR
Worcester WLVM-DP3-1617PR

Are you thinking about a career as a Diagnostic Technician or Mechanic? If you want to develop the skills you learned in your Level 1 or 2 Diploma, then you need this course. Our Level 3 Diploma offers you the opportunity to take your technical knowledge to an advanced level. You will be introduced to new technologies and learn how to diagnose and fix complex system faults.

You will learn through a combination of class-based theoretical learning and hands-on practice in the workshop. You will study; Advanced Engine, Chassis, Transmission and Electrical and Electronic Technology. By the end of the course, you will be able to inspect different vehicles, rectify their faults and assemble new vehicle parts. You will also gain a broad knowledge and understanding of health and safety in the workplace, and other skills associated with working in a garage, including improving your functional skills.

PROGRESSION: Upon successful completion of this course the main progression is into employment in the motor trade as a Vehicle Technician or a MOT Tester. Alternatively you can continue to study with an advanced apprenticeship.

COURSE LENGTH: 1 YEAR



OPEN EVENTS

SAT 17TH OCT 11AM-2PM ALL CAMPUSES
TUES 24TH NOV 5PM-8PM WORCESTER CAMPUS
THURS 26TH NOV 5PM-8PM BROMSGROVE CAMPUS
TUES 2ND FEB 5PM-8PM BROMSGROVE CAMPUS
THURS 4TH FEB 5PM-8PM WORCESTER CAMPUS



APPLY HERE
WWW.HOWCOLLEGE.AC.UK
08448 802 500



Diploma in Motorcycle Maintenance Level 1

Bromsgrove BMCM-DP1-1617PR
Worcester WMCM-DP1-1617PR

Are you passionate about motorcycles? Would you like to learn more about mechanics? If so, then you should consider a career as a Motorcycle Mechanic. Whether you want to work on choppers, cruisers, or sports bikes, our Level 1 Diploma will introduce you to the world of motorcycle maintenance and repair, and provide you with the skills and training you need to develop a great career in the industry.

You will learn a range of different procedures for servicing and repairing motorcycles in our specialist workshop, which offers all the tools and equipment you would find in a professional dealership. You will have the choice of fifteen modern and classic motorcycles to work on, including sports, commuters, cruisers, and mopeds with two and four stroke singles, twins, triples and fours.

In addition to working on bikes using engine stands, hoists and ramps, you will learn the theory you need to support your skills. You will learn all about the workings of engines, gearboxes, suspension, brakes and electrical systems.

PROGRESSION: Upon successful completion of this course, you could progress onto our Diploma in Motorcycle Maintenance and Repair, Level 2.

COURSE LENGTH: 1 YEAR



OPEN EVENTS

SAT 17TH OCT 11AM-2PM ALL CAMPUSES
TUES 24TH NOV 5PM-8PM WORCESTER CAMPUS
THURS 26TH NOV 5PM-8PM BROMSGROVE CAMPUS
TUES 2ND FEB 5PM-8PM BROMSGROVE CAMPUS
THURS 4TH FEB 5PM-8PM WORCESTER CAMPUS



APPLY HERE
WWW.HOWCOLLEGE.AC.UK
08448 802 500



Diploma in Motorcycle Maintenance & Repair level 2

Bromsgrove BMCM-SD2-1617PR
Worcester WMCM-DP2-1617PR

Have you recently completed your Diploma in Motorcycle Repair, Level 1? Maybe you have prior experience in the industry and are looking for a qualification? Whether you have experience in maintenance and repair or simply love motorbikes, our Level 2 Diploma offers the essential skills you need to take your training to the next level.

Our course balances theory with some great hands-on experience. By working on real sports, commuters, cruisers and mopeds, you will build your knowledge of different systems and begin to develop simple diagnosis and maintenance skills. You will learn how to remove and repair engines, electrical auxiliary units, vehicle chassis units and a range of other components. You will also gain a working knowledge of health and safety procedures, and develop important communications that will help you when ordering systems, job sheets and technical resources. You will also improve your functional skills. Our course is a recognised entry requirement for working as a Service Technician, so you can start working in a garage, dealership or maintenance depot the minute you finish your last assignment.

PROGRESSION: Your Level 2 Diploma qualifies you to work as a Service Technician. If you want to take your skills to the next level, you may want to consider studying a Level 3 Diploma, which will enable you to work as a Diagnostic Technician. There are many career paths to choose from in the motorcycle industry. You could get a job in a dealership, fix the latest sports bikes or even work in a race team!

COURSE LENGTH: 1 YEAR



OPEN EVENTS

SAT 17TH OCT 11AM-2PM ALL CAMPUSES
TUES 24TH NOV 5PM-8PM WORCESTER CAMPUS
THURS 26TH NOV 5PM-8PM BROMSGROVE CAMPUS
TUES 2ND FEB 5PM-8PM BROMSGROVE CAMPUS
THURS 4TH FEB 5PM-8PM WORCESTER CAMPUS



APPLY HERE
WWW.HOWCOLLEGE.AC.UK
08448 802 500





JAMIE BREWER & JONATHAN CHADWICK

LEVEL 3 MOTORCYCLE STUDENTS

who have both secured full time jobs with Ed Cosker Superbikes Ltd as Motorcycle technicians

"Although they have only recently started, Jonathan and Jamie have both proved to be passionate and capable technicians who learn quickly and are open to new ideas. Ed Cosker Superbikes Ltd would not hesitate in recommending Heart of Worcestershire College as a great source for recruitment for the motorcycle industry."

Ed Cosker

Superbike Ltd,
Company Director



Diploma in Motorcycle Maintenance and Repair Level 3

Bromsgrove BMCM-DP3-1617PR
Worcester WMCM-DP3-1617PR

Are you thinking about a career as a Motorcycle Engineer? Do you know your Harley's from your Honda's? Do you dream of turning your passion for motorcycles into a career? If the answer is yes, then this is the course for you! Building on the skills you learnt in your Level 1 or Level 2 Diploma our Level 3 course offers you the opportunity to take your technical knowledge to an advanced level. You will be introduced to a range of new technologies and learn how to diagnose and fix complex system faults, ready for a fantastic career in the industry.

You will learn through a combination of class-based learning and hands-on practice in the workshop. You will study advanced engine, chassis, transmission, electrical and electronic technology. You will learn how to prepare parts to professional standards, sand and media blast different components, and paint and finish parts. By the end of the course, you will be able to inspect different bike models, rectify their faults and assemble new components. You will also gain a broad knowledge and understanding of health and safety in the workplace, and other skills associated with working in a garage, including improving your functional skills.

PROGRESSION: Successful completion of this course will qualify you for immediate employment as a Diagnostic Technician. This is an exciting role that involves diagnosing, inspecting and maintaining motorcycles on a daily basis. You would also test systems, create written service reports, and liaise with part suppliers and other specialists. Alternatively, with company backing, you may want to consider our Foundation Degree in Automotive Engineering. Then how about building custom bikes for a living or starting your own business?

COURSE LENGTH: 1 YEAR



OPEN EVENTS

SAT 17TH OCT 11AM-2PM ALL CAMPUSES
TUES 24TH NOV 5PM-8PM WORCESTER CAMPUS
THURS 26TH NOV 5PM-8PM BROMSGROVE CAMPUS
TUES 2ND FEB 5PM-8PM BROMSGROVE CAMPUS
THURS 4TH FEB 5PM-8PM WORCESTER CAMPUS



APPLY HERE
WWW.HOWCOLLEGE.AC.UK
08448 802 500



Diploma in the Introduction to Vehicle Technology

Bromsgrove BVHT-DE3-1617PR

Are you considering a career in the motor vehicle industry? Do you enjoy tinkering with an engine and seeing how things work on the latest vehicles? Then this course could be the perfect option for you. Throughout the course you'll cover the basic technical needs for today's motor vehicle repair industry. You'll gain essential knowledge for working on light vehicles in all types of garages, dealerships and maintenance depots.

PROGRESSION: On successful completion of this course you could progress to a Level 1 Diploma in Vehicle or Motorcycle Maintenance or gain a career as a Automotive Technician.

COURSE LENGTH: 1 YEAR



OPEN EVENTS

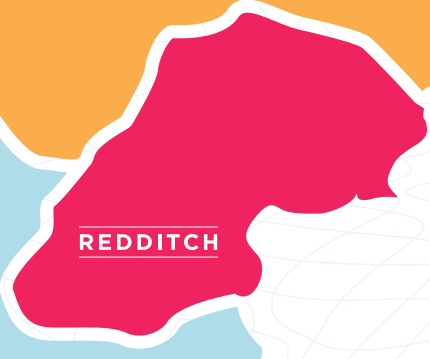
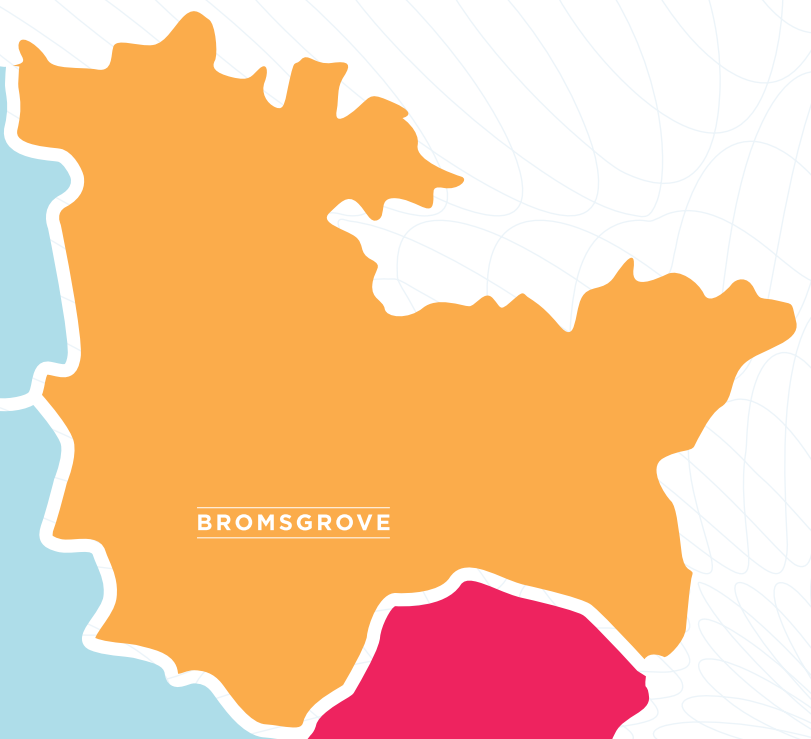
SAT 17TH OCT 11AM-2PM ALL CAMPUSES
THURS 26TH NOV 5PM-8PM BROMSGROVE CAMPUS
TUES 2ND FEB 5PM-8PM BROMSGROVE CAMPUS



APPLY HERE

WWW.HOWCOLLEGE.AC.UK
08448 802 500





Code	Location	Telephone	Post Code
W	Worcester Campus	01905 725555	WR1 2JF
R	Redditch Campus	01527 572523	B98 8DW
B	Bromsgrove Cam-	01527 570020	B60 1PQ
M	pus	01905 725526	WR14 1BY



How to find us



Bromsgrove

Art and Design
Automotive
Digital Media
Engineering
Games Design
Make-Up for Film, Television and Stage
Music
Performing Arts

Worcester

Access to HE
Art and Design
Automotive
Business
Construction
Early Years
Engineering
Hair, Barbering and Beauty Therapy
Hospitality
Health and Social Care
IT and Computing
Music
Performing Arts
Public Services
Sports
Travel and Tourism

Worcestershire

Apprenticeships
Inclusive Learning

Redditch

Access to HE
Business
Construction
Hair, Barbering and Beauty Therapy
Early Years
Hospitality
Health and Social Care
IT and Computing
Public Services
Science
Sports
Travel and Tourism

Malvern

Construction

TAKE THE TOUR

HEART OF
WORCESTERSHIRE
COLLEGE



AT THE
HEART
OF YOUR
FUTURE

www.howcollege.ac.uk | 08448 802500